

WAAS CH 49223 W10A	APP CRS 102°	Rwy Idg TDZE Apt Elev	5060 974 974
--	------------------------	-----------------------------	---

RNAV (GPS) RWY 10

POLK COUNTY/CORNELIUS MOORE FLD (4A4)

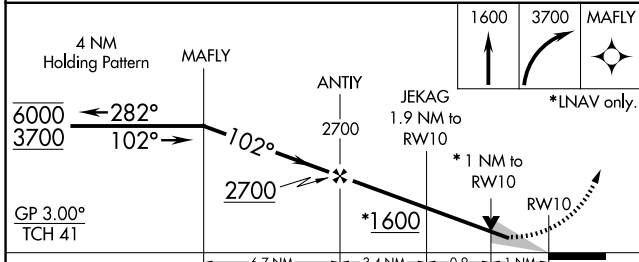
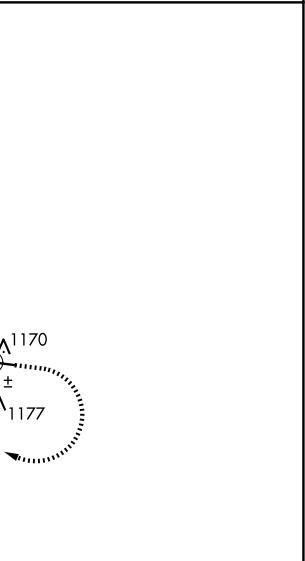
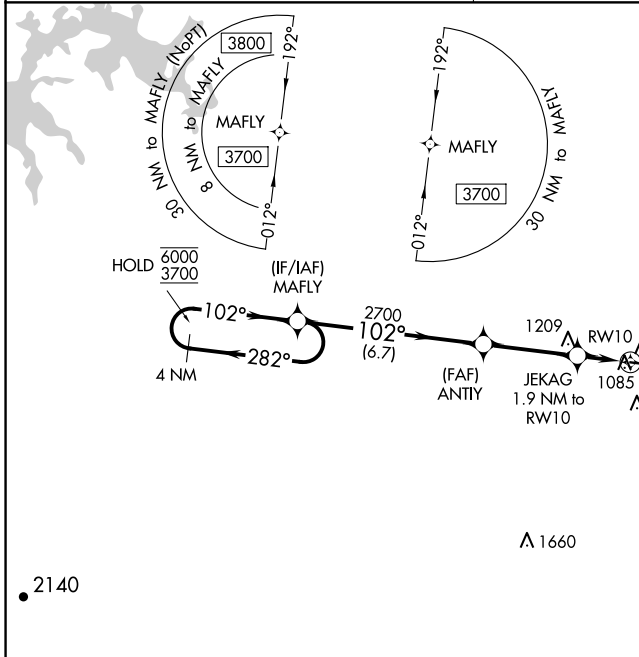
RNP APCH.

⚠ Baro-VNAV and VDP NA when using Cartersville altimeter setting.
⚠ NA For uncompensated Baro-VNAV systems, LNAV/VNAV NA below -8°C or above 54°C. Obtain local altimeter setting on CTAF, when not received, use Cartersville altimeter setting and increase LPV DA to 1292 feet; increase LNAV/VNAV DA to 1424 feet and all visibilities ¼ SM; increase all MDA 80 feet; increase LNAV visibility Cats C and D ⅜ SM.

MISSED APPROACH: Climb to 1600 then climbing right turn to 3700 direct MAFLY and hold.

ATLANTA CENTER
124.5 270.325

UNICOM
122.8 (CTAF)



ELEV 974	TDZE 974						
<table border="1"> <tr> <td>1600</td> <td>3700</td> <td>MAFLY</td> </tr> <tr> <td>↑</td> <td>↷</td> <td>✧</td> </tr> </table> <p>*LNAV only.</p>		1600	3700	MAFLY	↑	↷	✧
1600	3700	MAFLY					
↑	↷	✧					
MIRL Rwy 10-28							

CATEGORY	A	B	C	D
LPV DA		1224-1	250 (300-1)	
LNAV/VNAV DA		1356-1½	382 (400-1½)	
LNAV MDA		1340-1	366 (400-1)	

RNAV (GPS) RWY 10

SE-4, 15 MAY 2025 to 12 JUN 2025

SE-4, 15 MAY 2025 to 12 JUN 2025