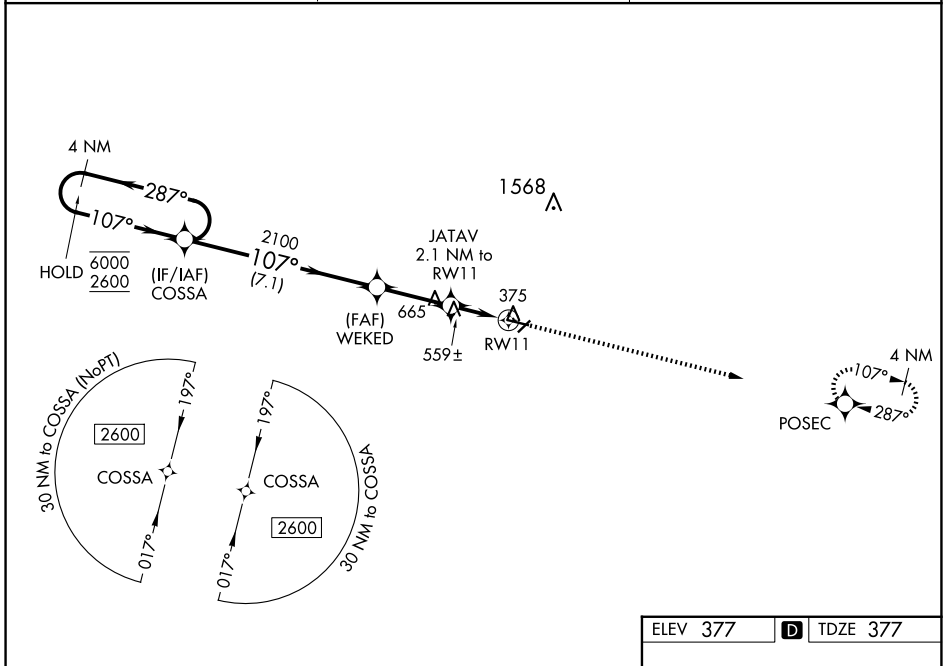


| | | |
|--|------------------------|---|
| WAAS CH 82521 W11A | APP CRS 107° | Rwy ldg 4400 TDZE 377 Apt Elev 377 |
|--|------------------------|---|

RNAV (GPS) RWY 11

COCHRAN (48A)

| | | |
|--|---|---|
| RNP APCH - GPS. | | MISSED APPROACH: Climb to 2600 direct POSEC and hold. |
| ⚠ Rwy 11 helicopter visibility reduction below 1 SM NA. For uncompensated Baro-VNAV systems, LNAV/VNAV NA below -15°C or above 54°C. Straight-in Rwy 11 NA at night, Circling Rwy 5, 11 and 23 NA at night. | | |
| AWOS-3PT 120.975 | ATLANTA APP CON * 124.2 279.6 | UNICOM 122.8 (CTAF) 0 |



SE-4, 15 MAY 2025 to 12 JUN 2025

SE-4, 15 MAY 2025 to 12 JUN 2025

| 4 NM Holding Pattern | | VGSI and RNAV glidepath not coincident (VGSI Angle 3.25/TCH 45). | | ELEV 377 | TDZE 377 |
|----------------------------|-------------------|--|---------------------------|-------------------|----------|
| GP 3.25° TCH 54 | | WEKED 2100 JATAV 2.1 NM to RW11 RW11 | | 2600 | POSEC |
| 6000 ← 287° 2600 → 107° | | 2100 1160 | | | |
| 7.1 NM | | 2.7 NM | | 2.1 NM | |
| CATEGORY | A | B | C | D | |
| LPV DA | 678-1 301 (400-1) | | | | |
| LNAV/VNAV DA | 690-1 313 (400-1) | | | | |
| LNAV MDA | 820-1 443 (500-1) | 820-1 3/8 443 (500-1 3/8) | | | |
| CIRCLING | 820-1 443 (500-1) | 860-1 483 (500-1) | 980-1 3/4 603 (700-1 3/4) | 980-2 603 (700-2) | |