

WAAS CH 81833 W23A	APP CRS 231°	Rwy Idg 5501 TDZE 235 Apt Elev 235
--	------------------------	---

RNAV (GPS) RWY 23

COOK COUNTY (15J)

RNP APCH - GPS.

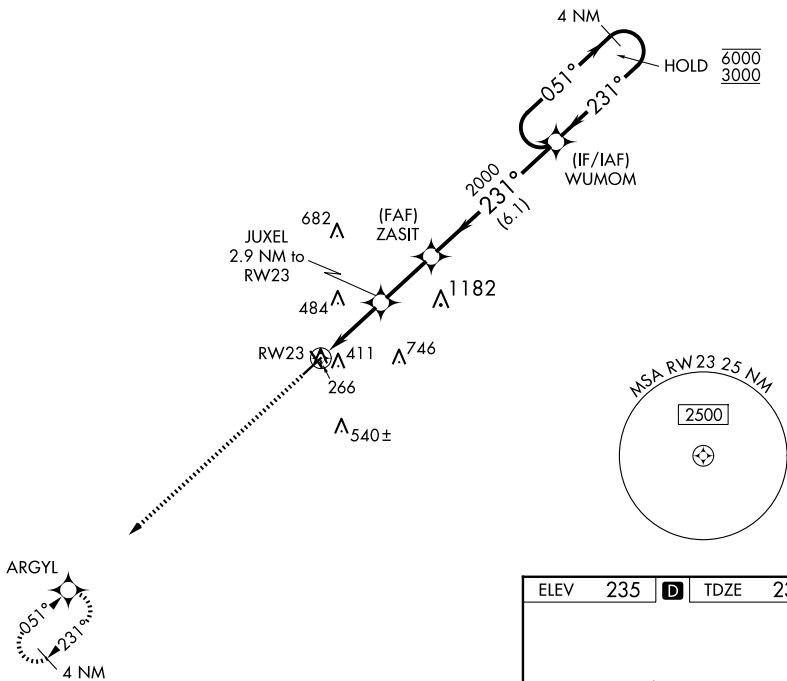
▽ Procedure NA at night. Rwy 23 helicopter visibility reduction below 1 SM NA.
▲ For uncompensated Baro-VNAV systems, LNAV/VNAV NA below -15°C or above 54°C.

MISSED APPROACH: Climb to 3000 direct ARGYL and hold, continue climb-in-hold to 3000.

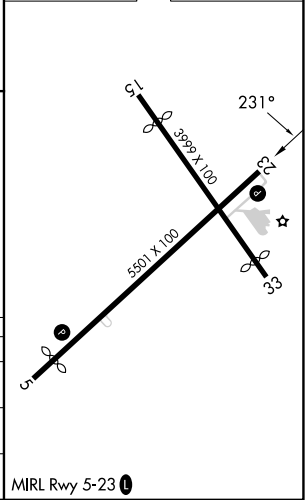
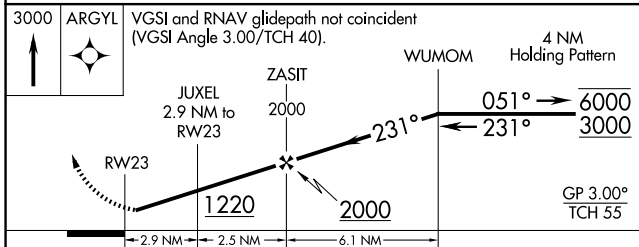
AWOS-3PT 118.025	VALDOSTA APP CON★ 126.6 285.6	UNICOM 122.8 (CTAF) 0
----------------------------	---	---------------------------------

SE-4, 15 MAY 2025 to 12 JUN 2025

SE-4, 15 MAY 2025 to 12 JUN 2025



ELEV 235	D	TDZE 235
----------	----------	----------



CATEGORY	A	B	C	D
LPV DA	595-1		360 (400-1)	
LNAV/VNAV DA	694-1 ³ / ₈		459 (500-1 ³ / ₈)	
LNAV MDA	700-1	465 (500-1)	700-1 ³ / ₈	465 (500-1 ³ / ₈)

MIRL Rwy 5-23 **0**