

WAAS CH 42506 W05A	APP CRS 051°	Rwy Idg TDZE Apt Elev	5000 235 235
--	------------------------	-----------------------------	---

RNAV (GPS) RWY 5

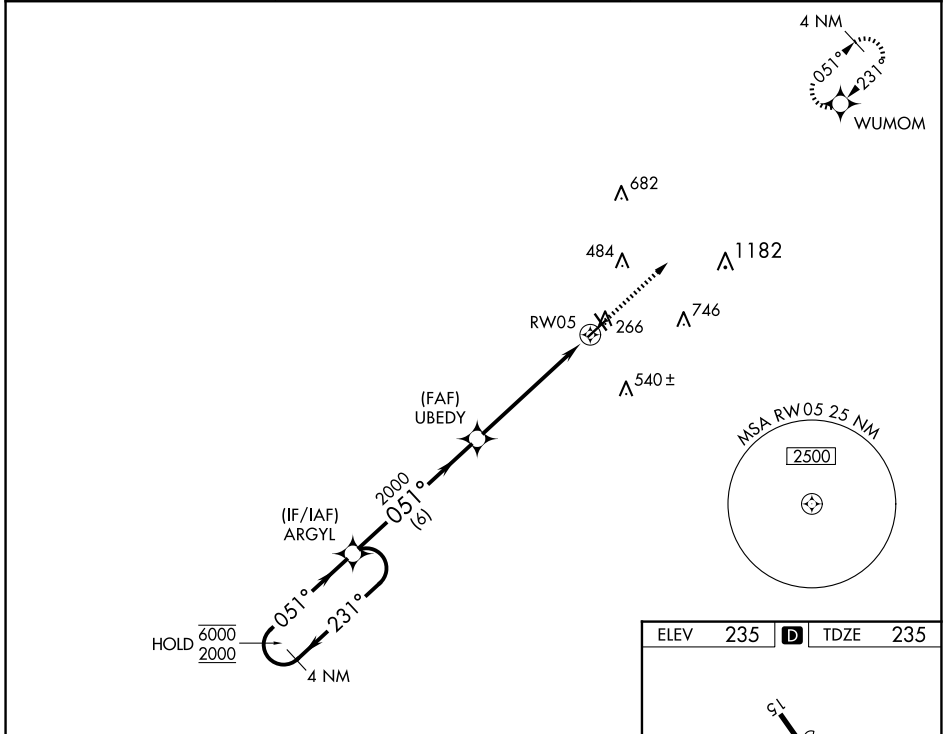
COOK COUNTY (15J)

RNP APCH - GPS.

▼ Procedure NA at night. Rwy 5 helicopter visibility reduction below 1 SM NA.
▲ For uncompensated Baro-VNAV systems, LNAV/VNAV NA below -15°C or above 54°C.

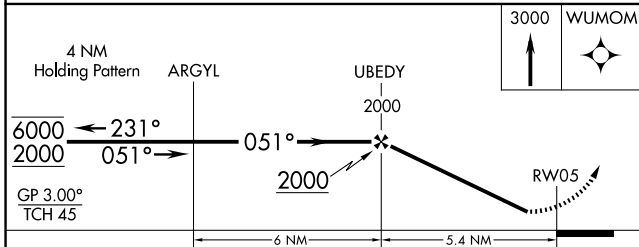
MISSED APPROACH: Climb to 3000 direct WUMOM and hold.

AWOS-3PT 118.025	VALDOSTA APP CON★ 126.6 285.6	UNICOM 122.8 (CTAF) 0
----------------------------	---	---------------------------------

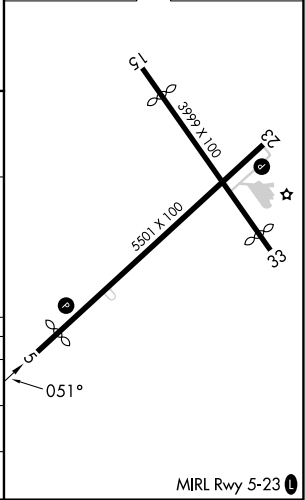


SE-4, 15 MAY 2025 to 12 JUN 2025

SE-4, 15 MAY 2025 to 12 JUN 2025



ELEV	235	D	TDZE	235
------	-----	----------	------	-----



CATEGORY	A	B	C	D
LPV DA		534-1	299 (300-1)	
LNAV/VNAV DA		622-1½	387 (400-1½)	
LNAV MDA	740-1	505 (600-1)	740-1½	505 (600-1½)