

WAAS CH 61311 W04A	APP CRS 043°	Rwy ldg 4974 TDZE 24 Apt Elev 24
--	------------------------	---

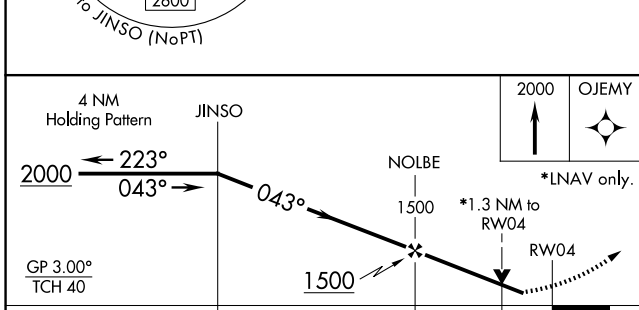
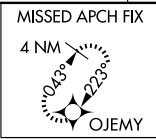
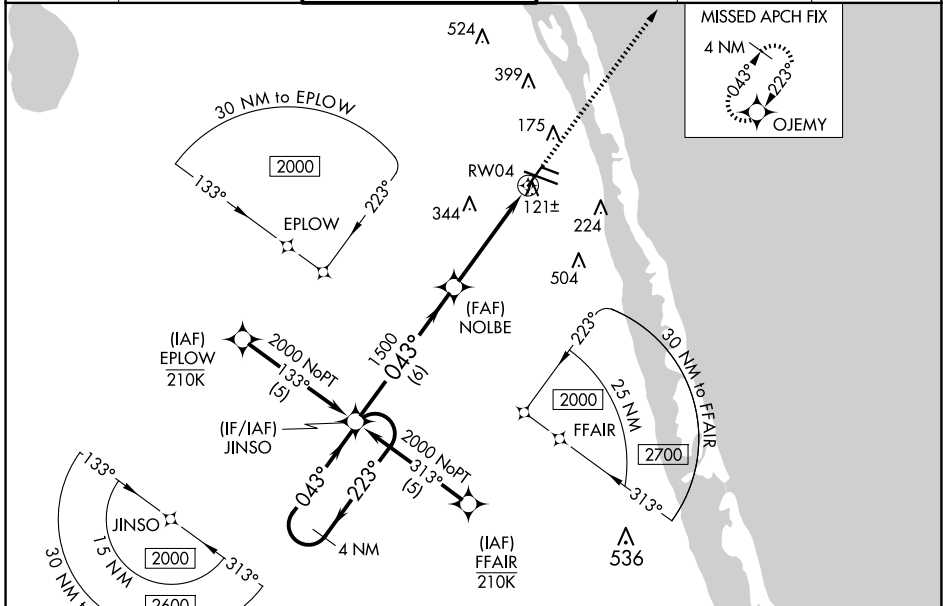
RNAV (GPS) RWY 4

VERO BEACH RGNL (VRB)

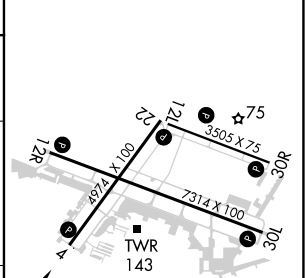
⚠ Circling to Rwy 30R NA at night. For uncompensated Baro-VNAV systems, LNAV/VNAV NA below 0°C (32°F) or above 54°C (130°F). DME/DME RNP-0.3 NA. When local altimeter setting not received, use Fort Pierce altimeter setting and increase LPV DA to 320 feet; increase LNAV/VNAV DA to 378 feet and all visibilities 1/8 SM; increase all MDAs 40 feet and LNAV Cat C/D and Circling Cat C/D visibility 1/4 SM. Baro-VNAV and VDP NA when using Fort Pierce altimeter setting. Rwy 4 helicopter visibility reduction below 3/4 SM NA.

MISSED APPROACH:
Climb to 2000 direct OJEMY and hold.

ATIS 120.575	PALM BEACH APP CON 123.625 225.4 (N)	VERO BEACH TOWER * 126.3 (CTAF) 0	GND CON 127.45	CLNC DEL 134.975	UNICOM 122.95
------------------------	--	---	--------------------------	----------------------------	-------------------------



ELEV 24	D	TDZE 24
---------	----------	---------



CATEGORY	A	B	C	D
LPV DA	297-7/8		273 (300-7/8)	
LNAV/VNAV DA	355-1 1/8		331 (400-1 1/8)	
LNAV MDA	480-1	456 (500-1)	480-1 3/8	456 (500-1 3/8)
CIRCLING	560-1	536 (600-1)	660-1 3/4	820-2 1/2
			636 (700-1 3/4)	796 (800-2 1/2)

MIRL Rwy 4-22, 12R-30L, and 12L-30R **0**
REIL Rwy 4, 12R, 22 and 30L **0**

SE-3, 15 MAY 2025 to 12 JUN 2025

SE-3, 15 MAY 2025 to 12 JUN 2025