

TACAN NIP Chan <b>19</b> <b>(108.2)</b>	APP CRS <b>269°</b>	Rwy Idg TDZE Apt Elev	<b>8003</b> <b>72</b> <b>80</b>
---	------------------------	-----------------------------	---------------------------------------

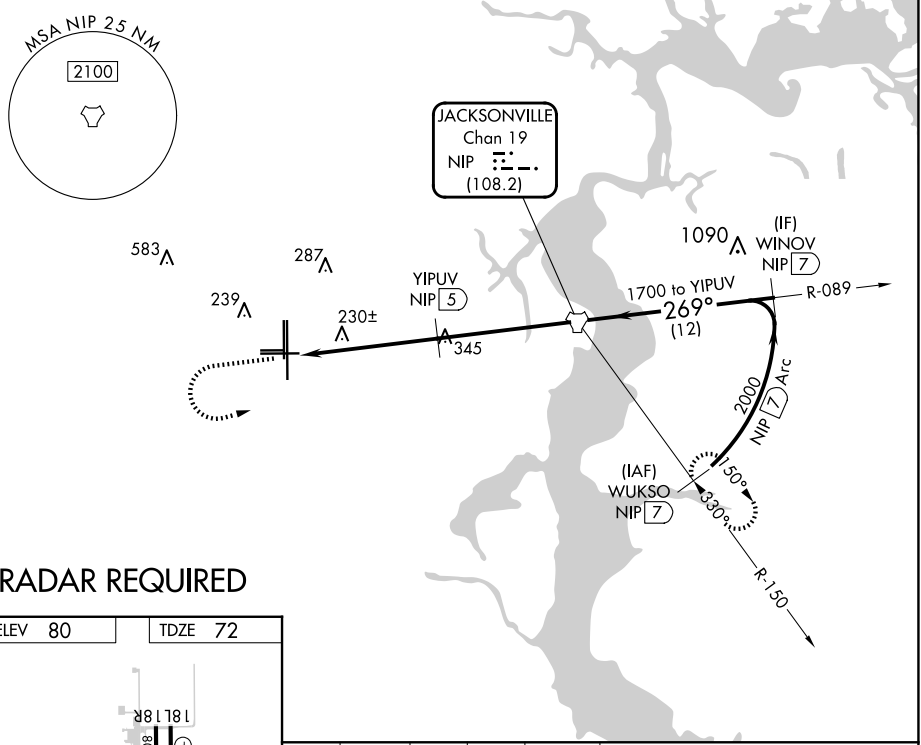
# TACAN RWY 27L

CECIL (VQQ)

**⚠** VDP NA with Jacksonville Intl altimeter setting. Helicopter visibility reduction below ¼ SM NA. When local altimeter setting not received, use Jacksonville Intl altimeter setting and increase all MDA 60 feet, increase S-27L Cats C, D, E visibility ½ mile.

**⚠** MISSED APPROACH: Climb to 700 then climbing left turn to 2100 direct NIP TACAN and continue on NIP TACAN R-150 to WUKSO/7 DME and hold.

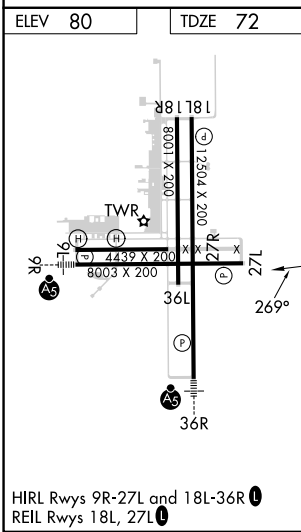
ATIS <b>125.275</b>	JACKSONVILLE APP CON <b>127.775 377.075</b>	CECIL TOWER* <b>126.1 (CTAF) 235.625</b>	GND CON <b>121.625 226.675</b>	CLNC DEL <b>123.975 254.25</b>	GCO <b>135.075</b>
------------------------	--	---	-----------------------------------	-----------------------------------	-----------------------



SE-3, 15 MAY 2025 to 12 JUN 2025

SE-3, 15 MAY 2025 to 12 JUN 2025

## RADAR REQUIRED



700	2100	NIP	NIP R-150	WUKSO NIP 7	VGSI and descent angles not coincident (VGSI Angle 3.00/TCH 67).
					WINOV NIP 7
CATEGORY	A	B	C	D	E
S-27L	540-1	468 (500-1)	540-1½	468 (500-1½)	
<b>C</b> CIRCLING	540-1 460 (500-1)	560-1 480 (500-1)	600-1½ 520 (600-1½)	640-2 560 (600-2)	900-3 820 (900-3)