

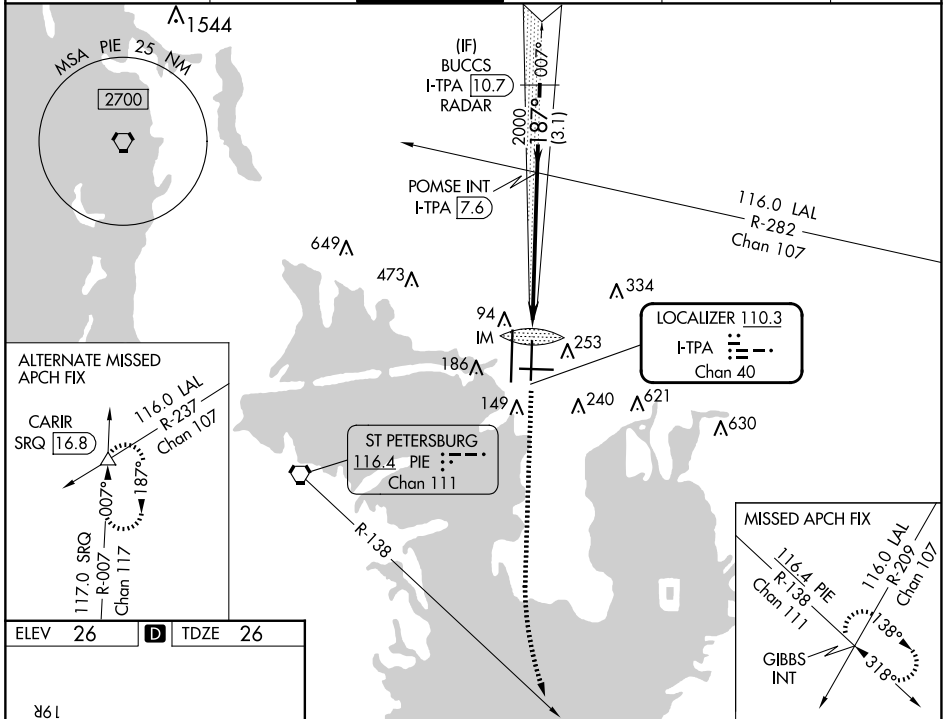
LOC/DME I-TPA <b>110.3</b> Chan <b>40</b>	APP CRS <b>187°</b>	Rwy Idg <b>8300</b> TDZE <b>26</b> Apt Elev <b>26</b>
---	------------------------	---

# ILS RWY 19L (SA CAT I)

TAMPA INTL (TPA)

RADAR required for procedure entry.		ALSIF-2 	MISSED APPROACH: Climb to 600 then climbing left turn to 2000 on heading 160° and on PIE VORTAC R-138 to GIBBS INT and hold.
Simultaneous approach authorized. Requires specific OPSPEC, MSPEC, or LOA approval.			

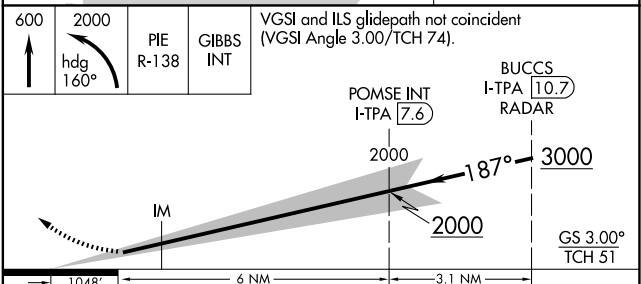
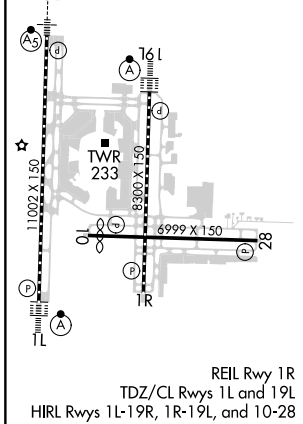
ARR <b>126.45</b>	D-ATIS <b>128.475</b>	DEP <b>118.5 307.175</b>	TAMPA APP CON <b>119.5 269.4</b>	TAMPA TOWER <b>119.5 269.4</b>	GND CON <b>121.7 269.4</b>	CLNC DEL <b>133.6</b>	CPDLC
----------------------	--------------------------	-----------------------------	-------------------------------------	-----------------------------------	-------------------------------	--------------------------	-------



SE-3, 15 MAY 2025 to 12 JUN 2025

SE-3, 15 MAY 2025 to 12 JUN 2025

ELEV 26	<b>D</b>	TDZE 26
---------	----------	---------



600	2000	PIE R-138	GIBBS INT	VGSI and ILS glidepath not coincident (VGSI Angle 3.00/TCH 74).
-----	------	-----------	-----------	---

1048'	6 NM	3.1 NM		
CATEGORY	A	B	C	D
S-ILS 19L	RA 150/14	150	DA 176	

**SA CATEGORY I ILS- SPECIAL AIRCREW & AIRCRAFT CERTIFICATION REQUIRED**