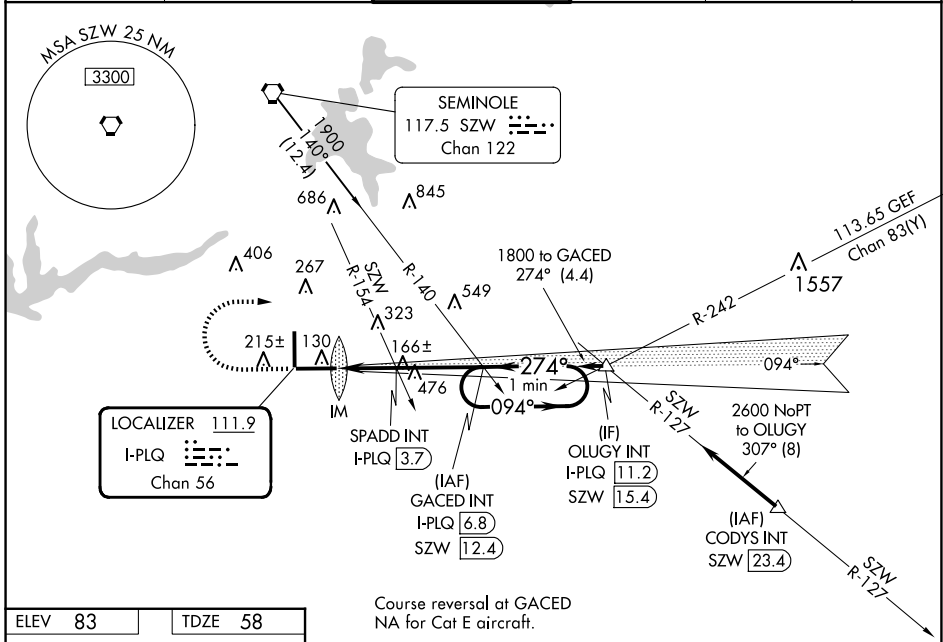


LOC/DME I-PLQ <b>111.9</b> Chan <b>56</b>	APP CRS <b>274°</b>	Rwy Idg TDZE Apt Elev	<b>8000</b> <b>58</b> <b>83</b>
---	------------------------	-----------------------------	---------------------------------------

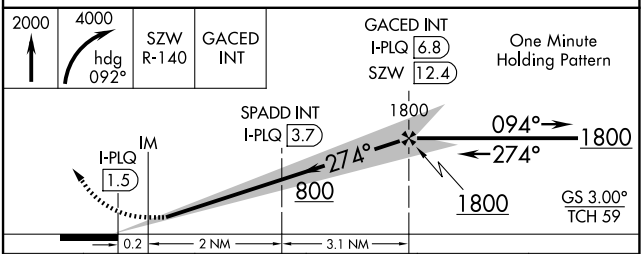
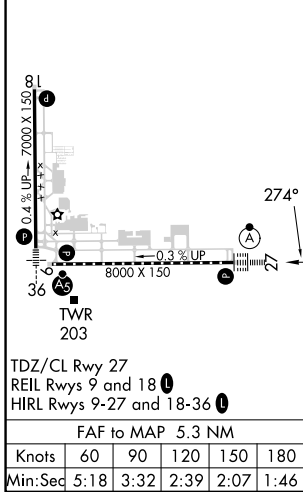
# ILS or LOC RWY 27

TALLAHASSEE INTL (TLH)

DME required.		ALSF-2 	MISSED APPROACH: Climb to 2000 then climbing right turn to 4000 on heading 092° and on SZW VORTAC R-140 to GACED INT/SZW 12.4 DME and hold, continue climb-in-hold to 4000.			
<p>▼ For inop ALS, increase S-ILS 27 Cat E visibility to RVR 4000 and S-LOC 27 Cats C, D and E visibility to 2 SM. SPADD FIX MINIMUMS S-LOC 27 Cat E visibility to RVR 4000.</p> <p>▲ ASR</p>	<p>ATIS <b>119.45 239.25</b></p>		<p>TALLAHASSEE APP CON ★ <b>135.8 317.4</b></p>	<p>TALLAHASSEE TOWER ★ <b>118.7</b>(CTAF) <b>257.8</b></p>	<p>GND CON <b>121.9 348.6</b></p>	<p>CLNC DEL <b>126.65 275.8</b></p>



ELEV 83	TDZE 58
---------	---------



CATEGORY	A	B	C	D	E
S-ILS 27	258/18 200 (200-½)				
S-LOC 27	800/24 742 (800-½)	800/40 742 (800-¾)	800-1¾ 742 (800-1¾)		
CIRCLING	800-1 717 (800-1)	800-1¼ 717 (800-1¼)	800-2 717 (800-2)	800-2¼ 717 (800-2¼)	1000-3 917 (1000-3)
SPADD FIX MINIMUMS					
S-LOC 27	740/24	682 (700-½)	740-1½	682 (700-1½)	
CIRCLING	740-1	657 (700-1)	740-2	800-2¼	1000-3
			657 (700-2)	717 (800-2¼)	917 (1000-3)

SE-3, 15 MAY 2025 to 12 JUN 2025

SE-3, 15 MAY 2025 to 12 JUN 2025