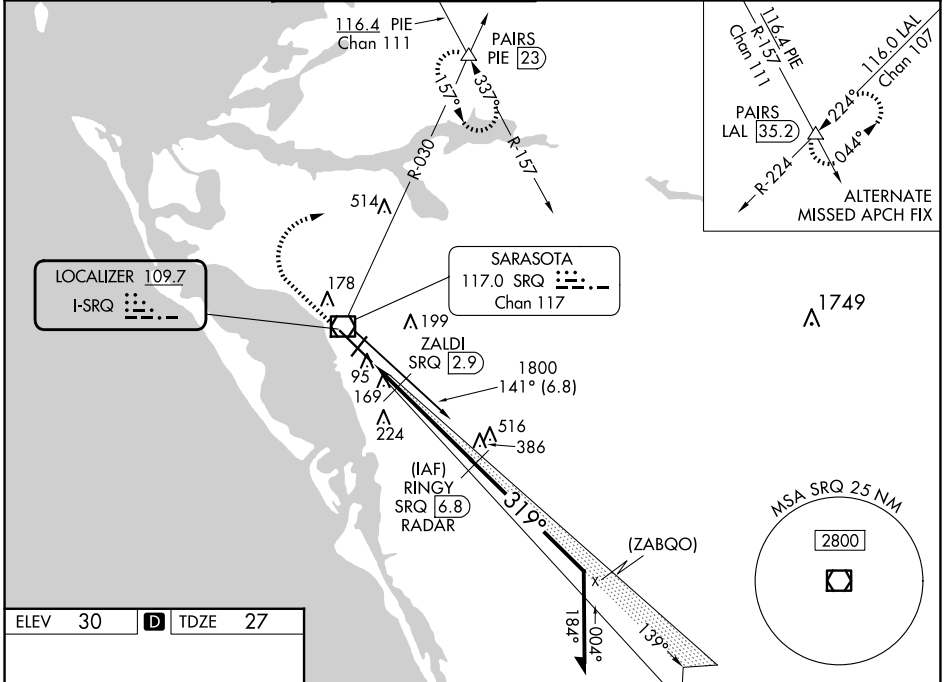


| | | |
|---------------------------|------------------------|--|
| LOC I-SRQ 109.7 | APP CRS 319° | Rwy Idg TDZE Apt Elev 7510 27 30 |
|---------------------------|------------------------|--|

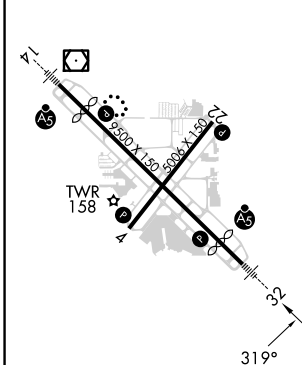
ILS or LOC RWY 32

SARASOTA/BRADENTON INTL (SRQ)

| | | | | | |
|---|--|--|--|---------------------------|-------------------------|
| DME or RADAR required. | | MALSR | MISSED APPROACH: Climb to 1000 then climbing right turn to 3000 on heading 065° and SRQ VOR/DME R-030 to PAIRS INT/PIE VORTAC 23 DME and hold, continue climb-in-hold to 3000. | | |
| ⚠ Autopilot coupled approach NA below 840. When control tower closed, S-ILS 32 Minimums NA, increase S-LOC 32 and ZALDI Fix Minimums S-LOC 32 all Cats visibility to 1. When control tower closed, inop table does not apply to S-LOC 32 and ZALDI Fix Minimums all Cats. | | | | | |
| ATIS 124.375 | TAMPA APP CON 119.65 353.575 | SARASOTA TOWER ★ 120.1(CTAF) 0 256.8 | GND CON 121.9 273.6 | CLNC DEL 118.25 | UNICOM 122.95 |



| | | |
|---------|----------|---------|
| ELEV 30 | D | TDZE 27 |
|---------|----------|---------|



REIL Rwy 22
HIRL Rws 14-32 and 4-22

FAF to MAP 5.4 NM

| | | | | | |
|---------|------|------|------|------|------|
| Knots | 60 | 90 | 120 | 150 | 180 |
| Min:Sec | 5:24 | 3:36 | 2:42 | 2:10 | 1:48 |

| | | | | | |
|-----------------|----------|-----------|-------|-----------------------|---------------------|
| 1000 | 3000 | SRQ R-030 | PAIRS | RINGY SRQ (6.8) RADAR | Remain within 10 NM |
| ↑ | hdg 065° | | △ | | |
| *LOC only. | | | | | |
| | | | | | |
| GS 3.00° TCH 53 | | | | | |

| CATEGORY | A | B | C | D |
|--------------------|-----------------------|---------------|-----------------------|-------------------|
| S-ILS 32 | 227-1/2 200 (200-1/2) | | | |
| S-LOC 32 | 480-1/2 | 453 (500-1/2) | 480-7/8 453 (500-7/8) | |
| CIRCLING | 500-1 | 470 (500-1) | 600-1/2 570 (600-1/2) | 600-2 570 (600-2) |
| ZALDI FIX MINIMUMS | | | | |
| S-LOC 32 | 360-1/2 333 (400-1/2) | | | |
| CIRCLING | 500-1 | 470 (500-1) | 600-1/2 570 (600-1/2) | 600-2 570 (600-2) |

SE-3, 15 MAY 2025 to 12 JUN 2025

SE-3, 15 MAY 2025 to 12 JUN 2025