

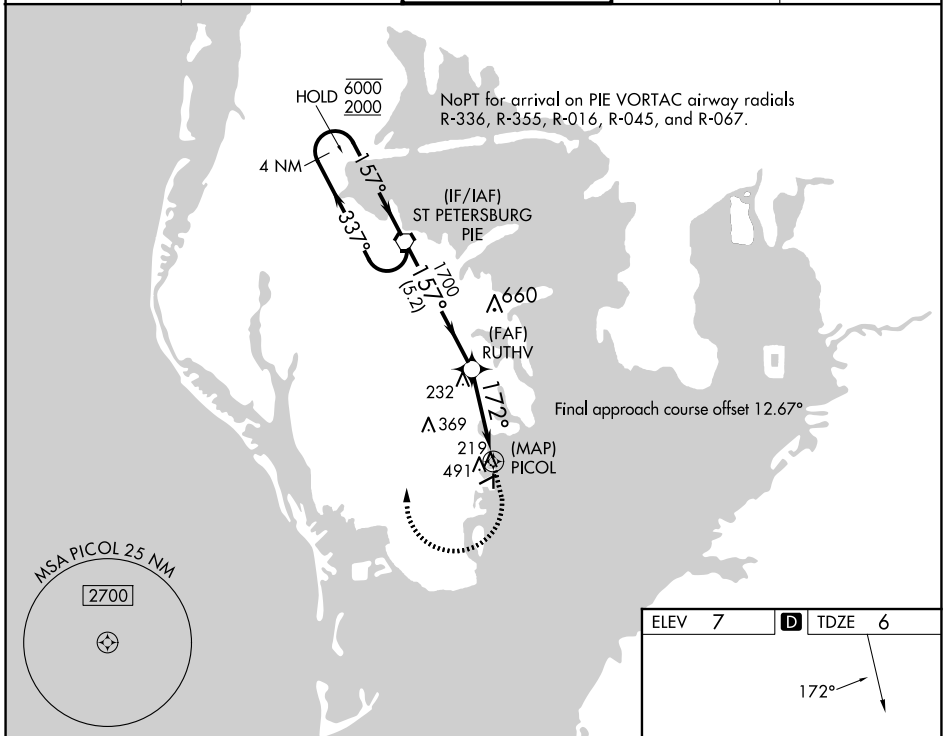
WAAS CH <b>77746</b> <b>W18A</b>	APP CRS <b>172°</b>	Rwy ldg TDZE Apt Elev	<b>2559</b> <b>6</b> <b>7</b>
--	------------------------	-----------------------------	-------------------------------------

# RNAV (GPS) RWY 18

ALBERT WHITTED (SPG)

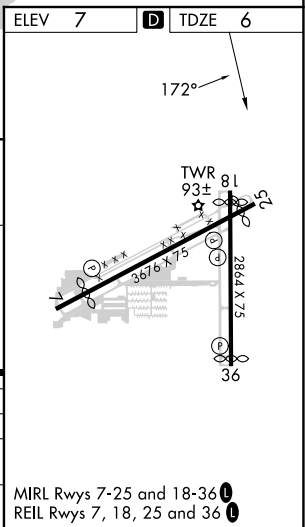
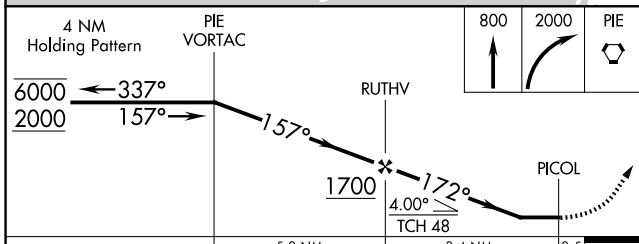
RNP APCH - GPS.		WHITTED TOWER ★ <b>127.4 (CTAF) 0 257.6</b>		GND CON <b>121.8</b>	UNICOM <b>122.95</b>
⚠ Circling NA northwest of Rwy 7 and 18. Procedure NA at night. ⚠ Rwy 18 helicopter visibility reduction below 1 SM NA.			MISSED APPROACH: Climb to 800 then climbing right turn to 2000 direct PIE VORTAC and hold.		

ASOS <b>118.875</b>	TAMPA APP CON <b>119.65 316.05 (EAST)</b> <b>125.3 316.05 (WEST)</b>	WHITTED TOWER ★ <b>127.4 (CTAF) 0 257.6</b>	GND CON <b>121.8</b>	UNICOM <b>122.95</b>
------------------------	--	--	-------------------------	-------------------------



SE-3, 15 MAY 2025 to 12 JUN 2025

SE-3, 15 MAY 2025 to 12 JUN 2025



CATEGORY	A	B	C	D
LP MDA	480-1	474 (500-1)		NA
LNAV MDA	800-1 794 (800-1)	800-1¼ 794 (800-1¼)		NA
CIRCLING	800-1 793 (800-1)	800-1¼ 793 (800-1¼)		NA

MIRL Rwy 7-25 and 18-36  
REIL Rwy 7, 18, 25 and 36