

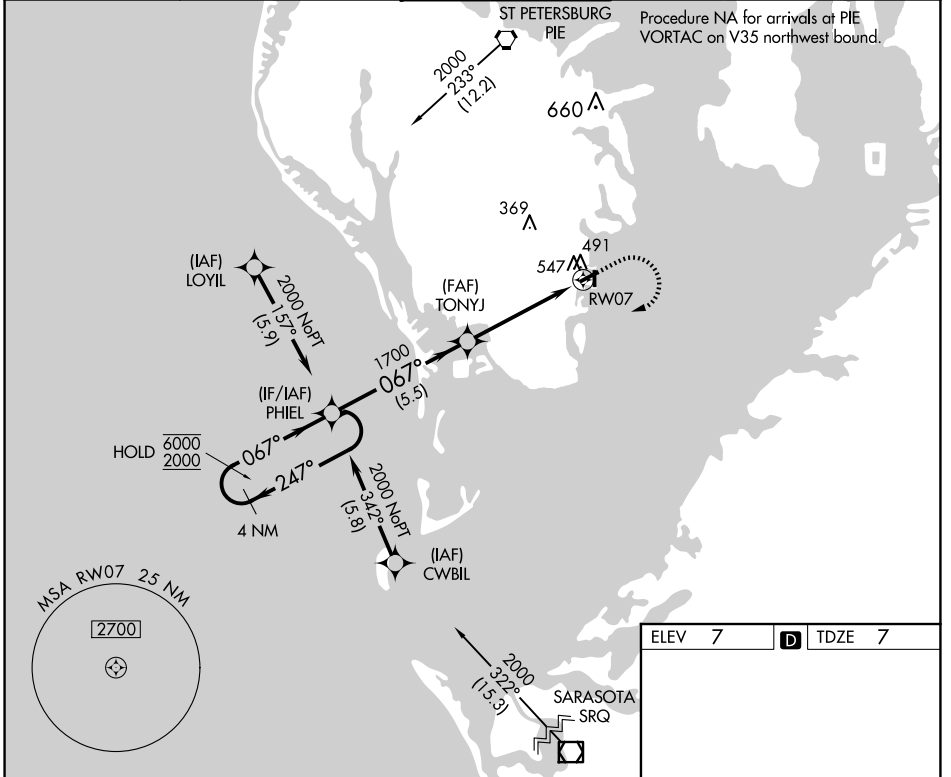
APP CRS	Rwy Idg	<b>2849</b>
<b>067°</b>	TDZE	<b>7</b>
	Apt Elev	<b>7</b>

# RNAV (GPS) RWY 7

ALBERT WHITTED (SPG)

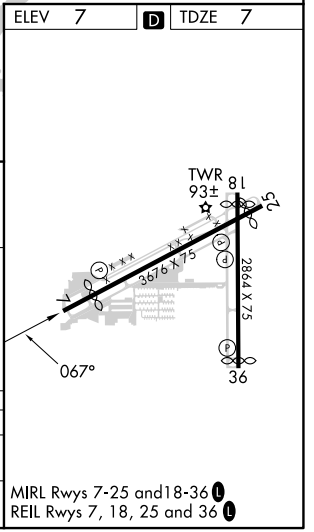
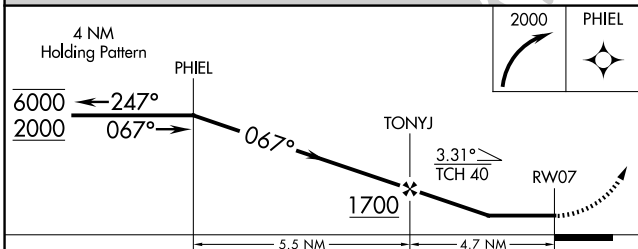
RNP APCH - GPS.	MISSED APPROACH: Climbing right turn to 2000 direct PHIEL and hold.
<p><b>∇</b> Circling NA northwest of Rws 7 and 18. Procedure NA at night.</p> <p><b>⚠</b> Rwy 7 helicopter visibility reduction below 1 SM NA.</p>	

ASOS <b>118.875</b>	TAMPA APP CON <b>119.65 316.05 (EAST)</b> <b>125.3 316.05 (WEST)</b>	WHITTED TOWER ★ <b>127.4 (CTAF) 0 257.6</b>	GND CON <b>121.8</b>	UNICOM <b>122.95</b>
------------------------	--	--	-------------------------	-------------------------



SE-3, 15 MAY 2025 to 12 JUN 2025

SE-3, 15 MAY 2025 to 12 JUN 2025



CATEGORY	A	B	C	D
LNAV MDA	800-1 793 (800-1)	800-1¼ 793 (800-1¼)	800-2½ 793 (800-2½)	NA
<b>C</b> CIRCLING	800-1 793 (800-1)	800-1¼ 793 (800-1¼)	800-2½ 793 (800-2½)	NA

MIRL Rws 7-25 and 18-36  
REIL Rws 7, 18, 25 and 36