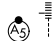


APP CRS	Rwy Idg	<b>8016</b>
<b>101°</b>	TDZE	<b>10</b>
	Apt Elev	<b>10</b>

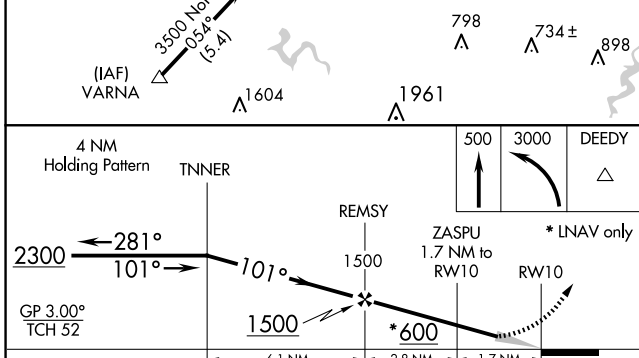
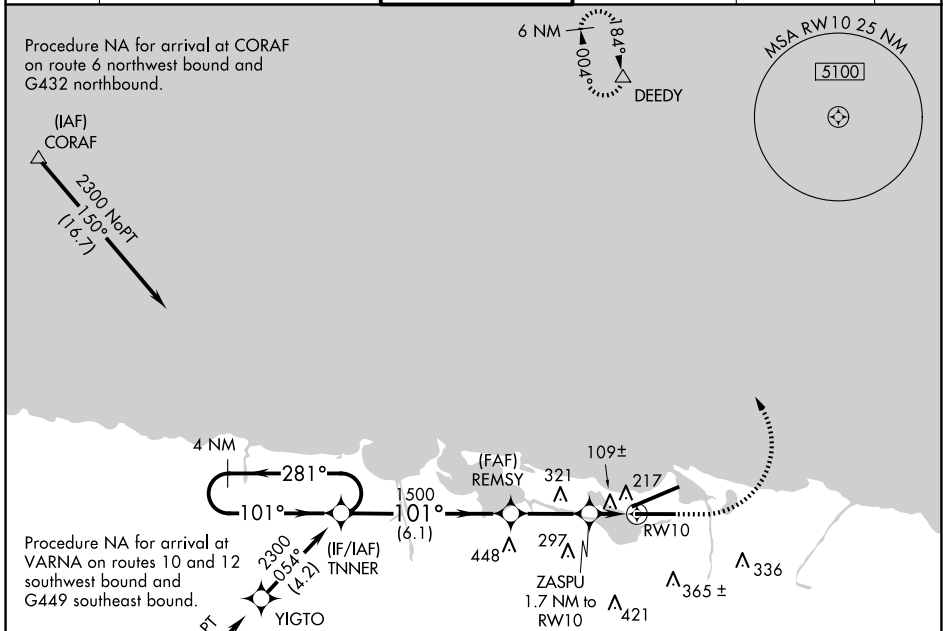
# RNAV (GPS) RWY 10

LUIS MUNOZ MARIN INTL (SJU)(TJSJ)

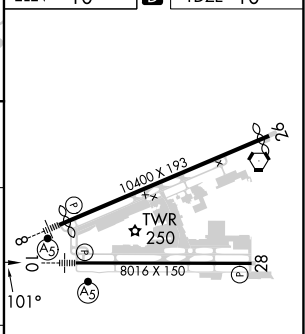
**⚠** WAAS VNAV NA. For uncompensated Baro-VNAV systems, LNAV/VNAV NA below -15°C (5°F) or above 54°C (130°F). DME/DME RNP-0.3 NA. For inop MALSR, increase LNAV/VNAV visibility all Cats to 1¼ and increase LNAV Cats C/D visibility to 1⅓.

**MALSR**  
  
**MISSED APPROACH:** Climb to 500 then climbing left turn to 3000 direct DEEDY and hold.

D-ATIS	SAN JUAN APP CON	SAN JUAN TOWER	GND CON	CLNC DEL	CPDLC
<b>125.8</b>	<b>119.4 269.2</b> (WEST & SW) <b>120.9 290.2</b> (NORTH & EAST)	<b>132.05 257.8</b>	<b>121.9 348.6</b>	<b>126.4 284.6</b>	



ELEV 10	<b>D</b>	TDZE 10
---------	----------	---------



CATEGORY	A	B	C	D
LNAV/VNAV DA	408-7/8 398 (400-7/8)			
LNAV MDA	480-1/2	470 (500-1/2)	480-1	470 (500-1)
<b>C</b> CIRCLING	600-1	590 (600-1)	740-2 730 (800-2)	920-3 910 (1000-3)

REIL Rwy 26  
 HIRL Rwys 8-26 and 10-28

SE-3, 15 MAY 2025 to 12 JUN 2025

SE-3, 15 MAY 2025 to 12 JUN 2025