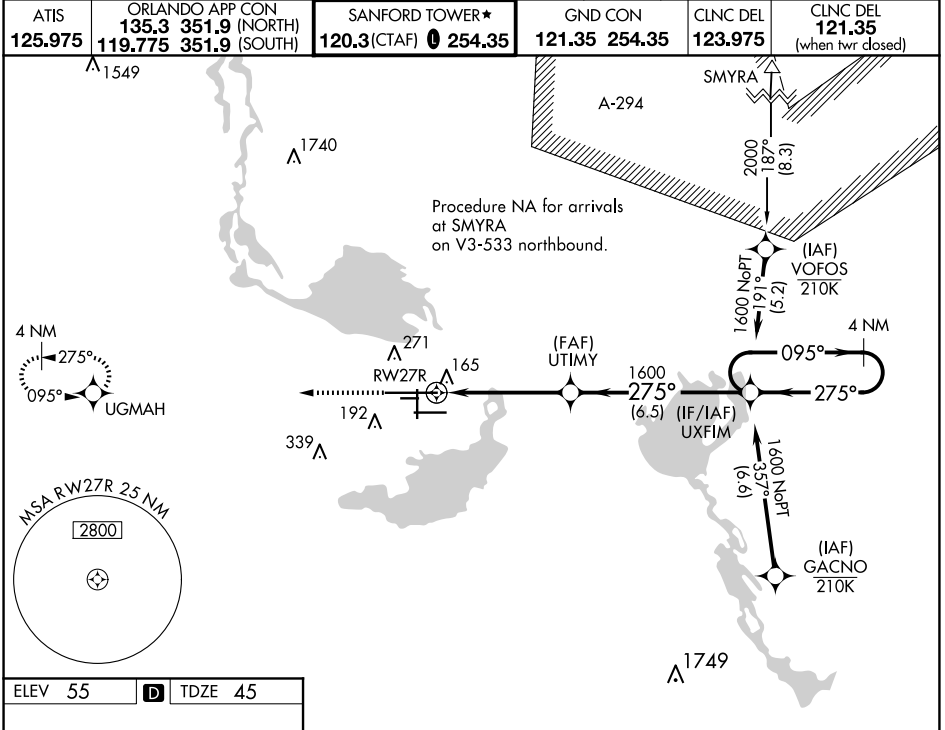


WAAS CH 63209 W27A	APP CRS 275°	Rwy Idg 11002 TDZE 45 Apt Elev 55
--	------------------------	--

RNAV (GPS) RWY 27R

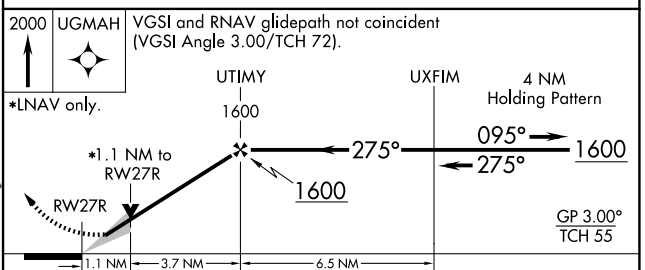
ORLANDO SANFORD INTL (SF'B)

<p>▼</p> <p>For uncompensated Baro-VNAV systems, LNAV/VNAV NA below 0°C (32°F) or above 54°C (130°F). DME/DME RNP-0.3 NA.</p> <p>For inop ALS, increase LNAV/VNAV all Cats visibility to 1½ SM, increase LNAV Cat C/D visibility to 1 SM.</p>	<p>MALSR</p>	<p>MISSED APPROACH: Climb to 2000 direct UGMAH and hold.</p>
	<p>ATIS 125.975</p> <p>ORLANDO APP CON 135.3 351.9 (NORTH) 119.775 351.9 (SOUTH)</p> <p>SANFORD TOWER★ 120.3(CTAF) 0 254.35</p> <p>GND CON 121.35 254.35</p> <p>CLNC DEL 123.975</p> <p>CLNC DEL 121.35 (when twr dosed)</p>	



ELEV 55	D	TDZE 45
----------------	----------	----------------

MIRL Rwy 9C-27C and 18-36 **L**
 HIRL Rwy 9L-27R and 9R-27L **L**
 REIL Rws 9C, 18, 27L and 36



CATEGORY	A	B	C	D
LPV DA	245-½	200 (200-½)		
LNAV/VNAV DA	425-⅞	380 (400-⅞)		
LNAV MDA	420-½	375 (400-½)	420-⅝	375 (400-⅝)
C CIRCLING	580-1	525 (600-1)	600-1½	640-2
			545 (600-½)	585 (600-2)

SE-3, 15 MAY 2025 to 12 JUN 2025

SE-3, 15 MAY 2025 to 12 JUN 2025