

APP CRS	Rwy Idg	5839
275°	TDZE	28
	Apt Elev	55

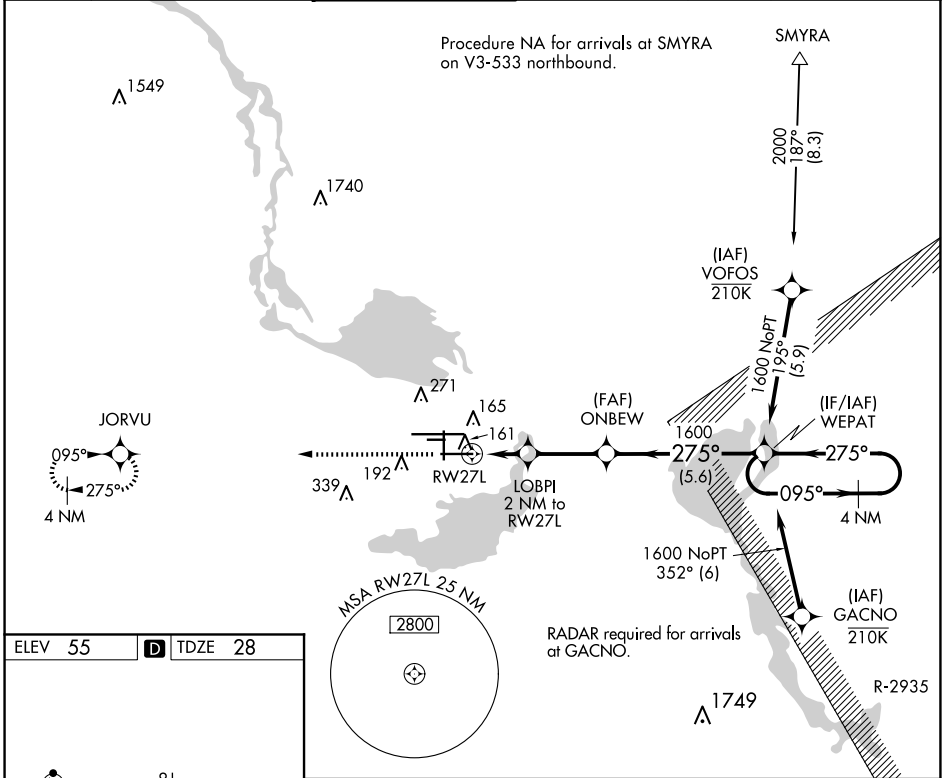
RNAV (GPS) RWY 27L

ORLANDO SANFORD INTL (SF'B)

⚠ Night Landing: Rwy 27C NA. DME/DME RNP-0.3 NA. Visibility reduction by helicopters NA. When local altimeter setting not received, use Exec altimeter setting: increase all MDAs 60 feet and visibility Cat C ¼ SM. VDP NA when using Exec altimeter setting.

⚠ MISSED APPROACH: Climb to 2000 direct JORVU and hold.

ATIS	ORLANDO APP CON	SANFORD TOWER*	GND CON	CLNC DEL	CLNC DEL
125.975	135.3 351.9 (NORTH) 119.775 351.9 (SOUTH)	120.3(CTAF) 0 254.35	121.35 254.35	123.975	121.35 (when twr closed)

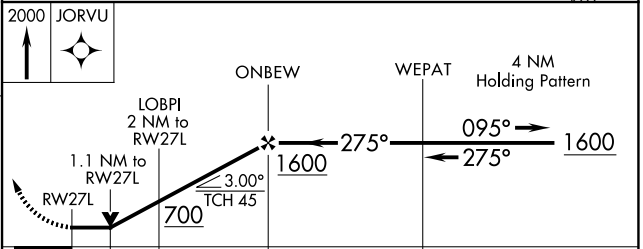


ELEV 55	D	TDZE 28
---------	----------	---------

MIRL Rwy 9C-27C and 18-36 **⚠**

HIRL Rwy 9L-27R and 9R-27L **⚠**

REIL Rws 9C, 18, 27L and 36



CATEGORY	A	B	C	D
LNVA MDA	420-1	392 (400-1)	420-1½ 392 (400-1½)	420-2 392 (400-2)
C CIRCLING	580-1	525 (600-1)	600-1½ 545 (600-1½)	640-2 585 (600-2)

SE-3, 15 MAY 2025 to 12 JUN 2025

SE-3, 15 MAY 2025 to 12 JUN 2025