

LOC/DME I-OOS 111.55 Chan 52 (Y)	APP CRS 095°	Rwy Idg TDZE Apt Elev 5000 39 55
--	------------------------	--

ILS or LOC RWY 9R

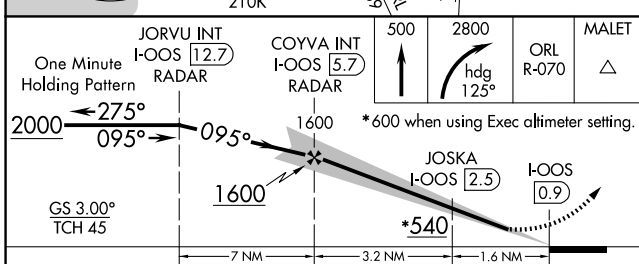
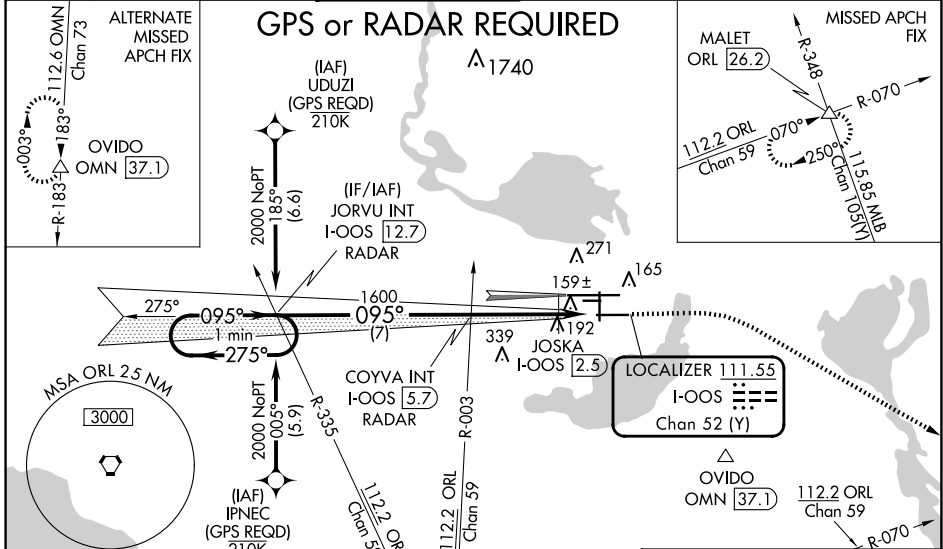
ORLANDO SANFORD INTL (SF'B)

▼
▲ When local altimeter setting not received, use Exec altimeter setting and increase S-ILS DA to 282, and all MDA 60 feet; increase S-LOC 9R Cat C, D visibility ¼ mile, Circling Cat C visibility ½ mile and JOSKA Fix Minimums S-LOC 9R Cats C, D visibility ¼ mile. Simultaneous approach authorized with Rwy 9L. Night landing: Rwy 27C NA.

MALSR
AS

MISSED APPROACH: Climb to 500 then climbing right turn to 2800 on heading 125° and ORL VORTAC R-070 to MALET INT/ORL 26.2 DME and hold.

ATIS 125.975	ORLANDO APP CON 135.3 351.9 (NORTH) 119.775 351.9 (SOUTH)	SANFORD TOWER* 120.3 (CTAF) 0 254.35	GND CON 121.35 254.35	CLNC DEL 123.975	CLNC DEL 121.35 (When twr closed)
------------------------	---	---	---------------------------------	----------------------------	--



ELEV 55	D	TDZE 39
---------	---	---------

MIRL Rwy 9C-27C and 18-36
HIRL Rwy 9L-27R and 9R-27L
REIL Rws 9C, 18, 27L and 36

FAF to MAP 4.8 NM

Knots	60	90	120	150	180
Min:Sec	4:48	3:12	2:24	1:55	1:36

SE-3, 15 MAY 2025 to 12 JUN 2025

SE-3, 15 MAY 2025 to 12 JUN 2025