

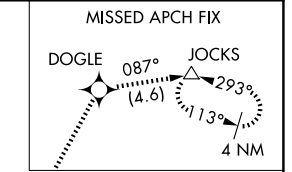
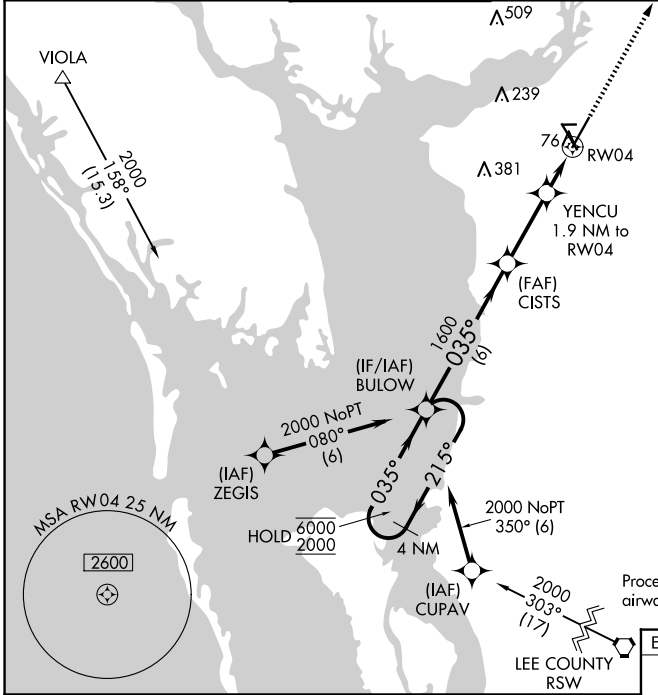
WAAS CH 48807 W04A	APP CRS 035°	Rwy Idg TDZE Apt Elev	7193 24 26
--	------------------------	-----------------------------	---------------------------------------

RNAV (GPS) RWY 4

PUNTA GORDA (PGD)

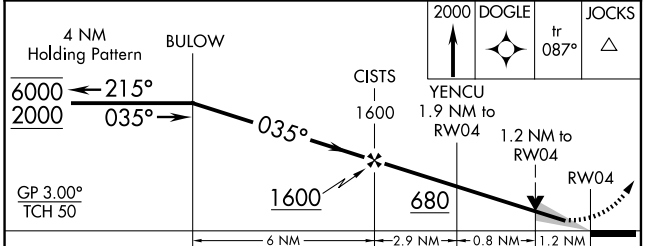
RNP APCH - GPS.				
For uncompensated Baro-VNAV systems, LNAV/VNAV NA below 3°C or above 54°C.				
ATIS 135.675	FORT MYERS APP CON ★ 127.05 306.2	PUNTA GORDA TOWER ★ 121.0 (CTAF) 0	GND CON 119.55	CLNC DEL 119.55

CLNC DEL 127.05 (When twr closed)	UNICOM 122.975
--	--------------------------



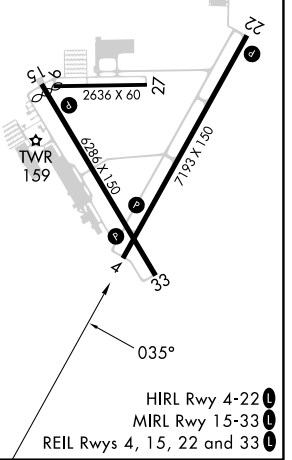
1549 Δ
1544 Δ

Procedure NA for arrival on RSW VORTAC airway radials 312 CW 016.



ELEV 26	D TDZE 24
---------	------------------

CATEGORY	A	B	C	D
LPV DA		256- ³ / ₄	232 (300- ³ / ₄)	
LNAV/VNAV DA		393-1	369 (400-1)	
LNAV MDA	440-1	416 (500-1)	440-1 ¹ / ₈	416 (500-1 ¹ / ₈)
C CIRCLING	460-1 434 (500-1)	580-1 554 (600-1)	600-1 ¹ / ₂ 574 (600-1 ¹ / ₂)	740-2 ¹ / ₄ 714 (800-2 ¹ / ₄)



SE-3, 15 MAY 2025 to 12 JUN 2025

SE-3, 15 MAY 2025 to 12 JUN 2025

HIRL Rwy 4-22 **0**
MIRL Rwy 15-33 **0**
REIL Rws 4, 15, 22 and 33 **0**