

PUNTA GORDA, FLORIDA

AL-6178 (FAA)

25107

LOC/DME I-PGD 109.75 Chan 34 (Y)	APP CRS 035°	Rwy ldg 7193 TDZE 24 Apt Elev 26
--	------------------------	---

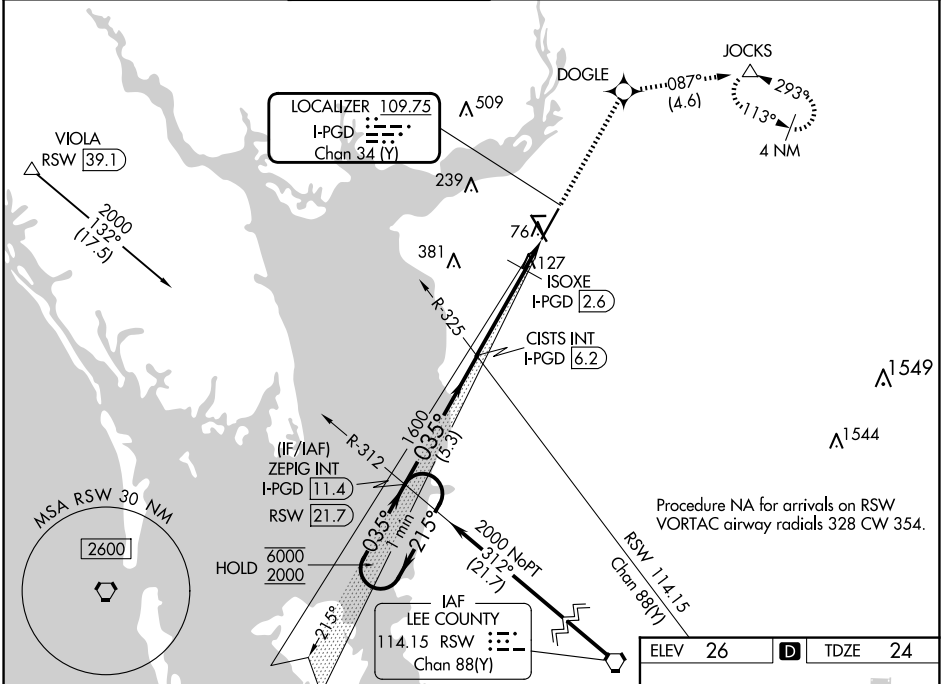
ILS or LOC RWY 4

PUNTA GORDA (PGD)

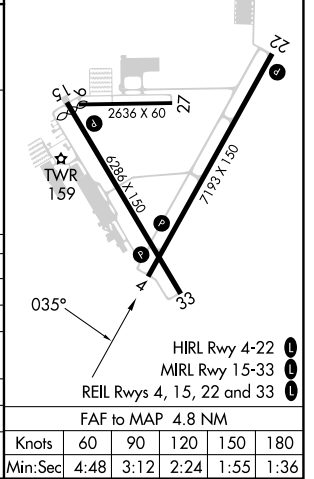
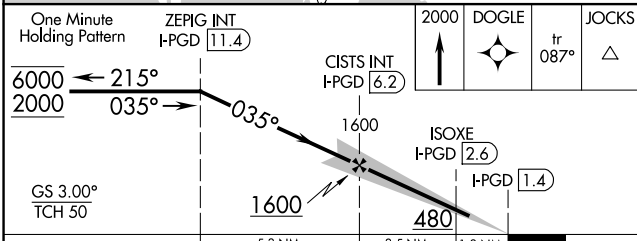
RNP APCH - GPS.

MISSED APPROACH: Climb to 2000 direct DOGLE and on track 087° to JOCKS and hold.

ATIS 135.675	FORT MYERS APP CON * 127.05 306.2	PUNTA GORDA TOWER * 121.0 (CTAF) 0	GND CON 119.55	CLNC DEL 119.55	CLNC DEL 127.05 (When twr closed)	UNICOM 122.975
------------------------	---	--	--------------------------	---------------------------	--	--------------------------



ELEV 26	D	TDZE 24
---------	---	---------



CATEGORY	A	B	C	D
S-ILS 4		256-¾	232 (300-¾)	
S-LOC 4	480-1	456 (500-1)	480-1⅞	456 (500-1⅞)
CIRCLING	480-1	580-1	600-1½	740-2¼
	454 (500-1)	554 (600-1)	574 (600-1½)	714 (800-2¼)
ISOXE FIX MINIMUMS (DME REQUIRED)				
S-LOC 4	380-1	356 (400-1)		
CIRCLING	460-1	580-1	600-1½	740-2¼
	434 (500-1)	554 (600-1)	574 (600-1½)	714 (800-2¼)

FAF to MAP 4.8 NM					
Knots	60	90	120	150	180
Min:Sec	4:48	3:12	2:24	1:55	1:36

PUNTA GORDA, FLORIDA
Amdt 1 05SEP24

26°55'N-81°59'W

PUNTA GORDA (PGD)

ILS or LOC RWY 4

SE-3, 15 MAY 2025 to 12 JUN 2025

SE-3, 15 MAY 2025 to 12 JUN 2025