

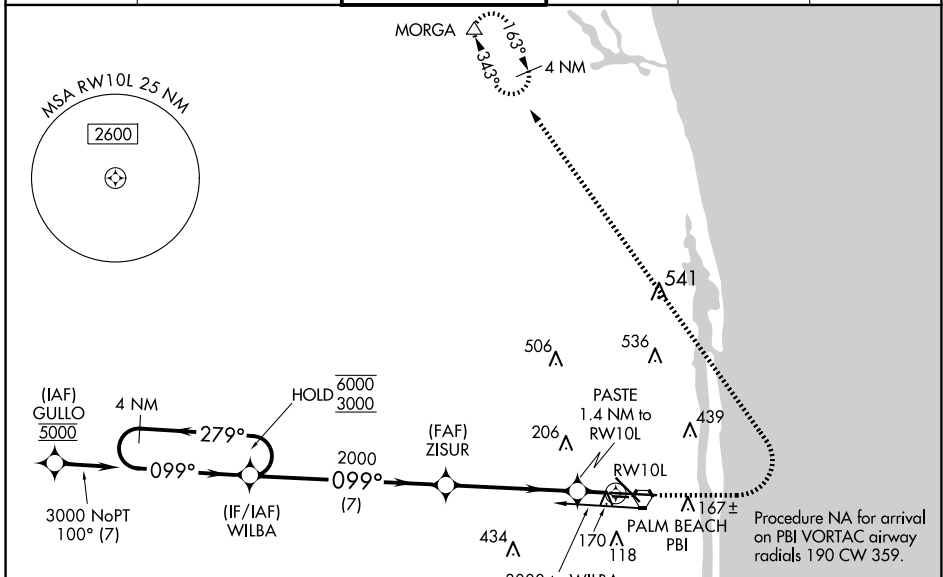
WAAS CH <b>97317</b> <b>W10A</b>	APP CRS <b>099°</b>	Rwy Idg <b>8151</b> TDZE <b>16</b> Apt Elev <b>20</b>
--	------------------------	---

# RNAV (GPS) Y RWY 10L

PALM BEACH INTL (PBI)

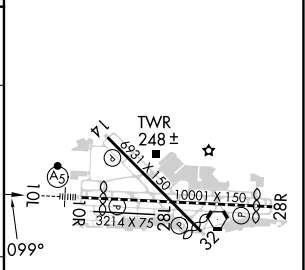
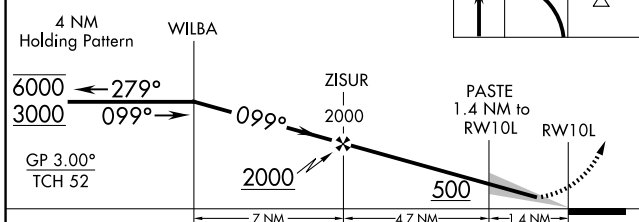
RNP APCH - GPS.	MALSR 	MISSED APPROACH: Climb to 1000 then climbing left turn to 3000 direct MORGA and hold.
<p><b>⚠</b> For uncompensated Baro-VNAV systems, LNAV/VNAV NA below 6°C or above 54°C. For inop ALS, increase LNAV/VNAV all Cats visibility to RVR 5500 and increase LNAV Cats C/D visibility to RVR 6000. # RVR 1800 authorized with use of FD or AP or HUD to DA.</p>		

D-ATIS <b>123.75</b>	PALM BEACH APP CON <b>128.3 317.4</b>	PALM BEACH TOWER <b>119.1 257.8</b>	GND CON <b>121.9 284.6</b>	CLNC DEL <b>121.6 284.6</b>	CPDLC
-------------------------	--	--	-------------------------------	--------------------------------	-------



ELEV 20	<b>D</b> TDZE 16
---------	------------------

VGSI and RNAV glidepath not coincident (VGSI Angle 3.00/TCH 68).



CATEGORY	A	B	C	D
LPV DA #		216/24	200 (200-½)	
LNAV/VNAV DA		392/35	376 (400-¾)	
LNAV MDA	420/24	404 (400-½)	420/40	404 (400-¾)
<b>C</b> CIRCLING	560-1	540 (600-1)	740-2 720 (800-2)	780-2½ 760 (800-2½)

HIRL Rwy 10L-28R  
REIL Rwy 10R, 14, 28L, 28R and 32  
MIRL Rwy 14-32 and 10R-28L

SE-3, 15 MAY 2025 to 12 JUN 2025

SE-3, 15 MAY 2025 to 12 JUN 2025