


WAAS CH 69522 W12A	APP CRS 128°	Rwy Idg TDZE Apt Elev	6000 8 8
--	------------------------	-----------------------------	-------------------------------------

RNAV (GPS) RWY 12

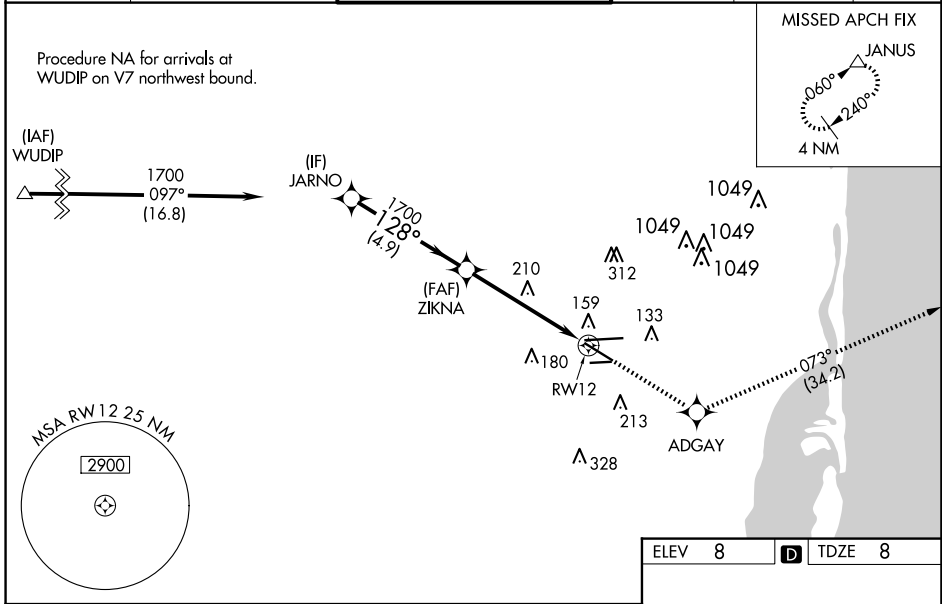
MIAMI-OPA LOCKA EXEC (OPF)

⚠ Baro-VNAV NA when using Miami Intl altimeter setting. For uncompensated Baro-VNAV systems, LNAV/VNAV NA below -1.5°C (5°F) or above 43°C (109°F). Helicopter visibility reduction below 3/4 SM NA. DME/DME RNP-0.3 NA. VDP NA with Miami Intl altimeter setting. When local altimeter setting not received, use Miami Intl altimeter setting and increase all DA/MDA 20 feet and Circling Cat D visibility 1/4 SM. Inop table does not apply. For inop MALSR, increase LNAV/VNAV all Cats visibility and LNAV Cats A and B to 1 mile and LNAV Cats C and D visibility to 1 1/8 miles. For inop MALSR, when using Miami Intl altimeter setting, increase LNAV/VNAV all Cats visibility and LNAV Cats A and B visibility to 1 mile.

MALSR


MISSED APPROACH: Climb to 2000 direct ADGAY and on track 073° to JANUS and hold.

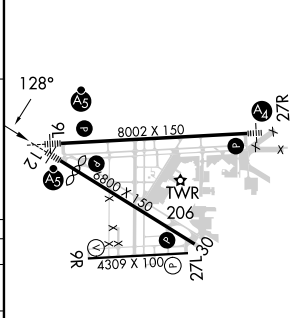
ATIS 125.9	MIAMI APP CON 128.6 306.975	OPA LOCKA TOWER ★ 134.675 (CTAF) 0	GND CON 120.025	CLNC DEL 119.2	GCO 119.45
----------------------	---------------------------------------	--	---------------------------	--------------------------	----------------------



SE-3, 15 MAY 2025 to 12 JUN 2025

SE-3, 15 MAY 2025 to 12 JUN 2025

ELEV 8		D TDZE 8	
JARNO		ZIKNA	
1700		1700	
GP 3.00°		*LNAV only.	
TCH 53		*1.5 NM to RW12	
4.9 NM		3.7 NM	
		1.5 NM	
CATEGORY	A	B	C
LPV DA		208-3/4	200 (200-3/4)
LNAV/VNAV DA		320-3/4	312 (400-3/4)
LNAV MDA	520-3/4	512 (600-3/4)	520-1 512 (600-1)
CIRCLING	540-1	532 (600-1)	620-1 3/4 740-2 1/4 612 (700-1 3/4) 732 (800-2 1/4)



MIRL Rwy 9R-27L
 HIRL Rwys 9L-27R and 12-30 0