

WAAS CH <b>53422</b> <b>W09A</b>	APP CRS <b>093°</b>	Rwy Idg <b>8002</b> TDZE <b>8</b> Apt Elev <b>8</b>
--	------------------------	---

# RNAV (GPS) RWY 9L

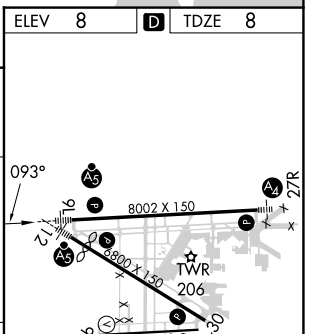
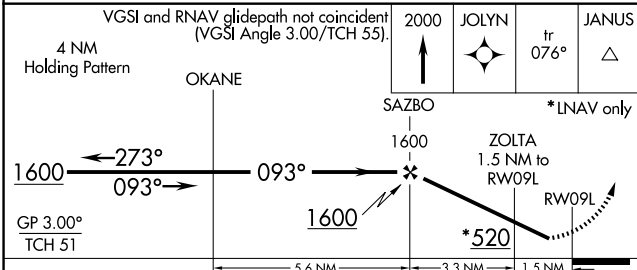
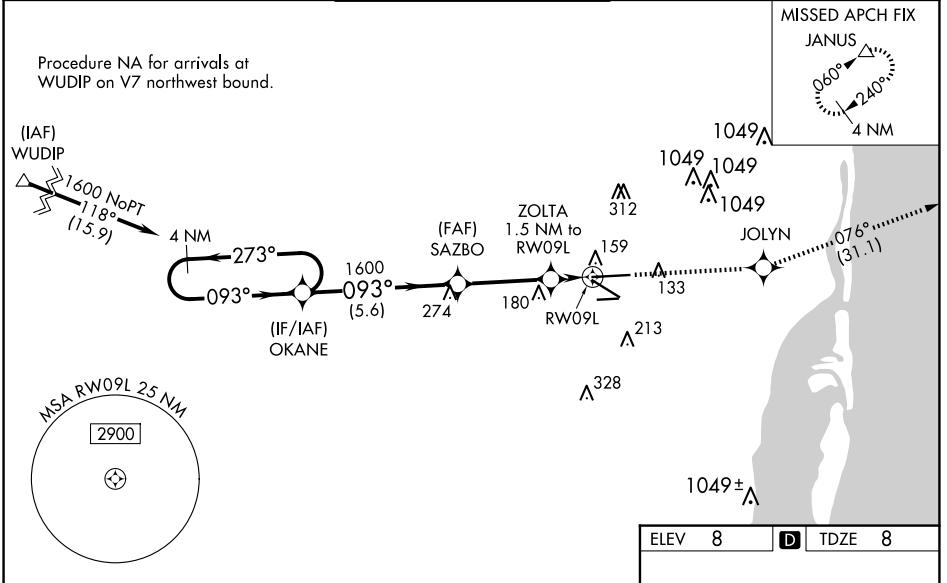
MIAMI-OPA LOCKA EXEC (OPF)

**⚠** Baro-VNAV NA when using Miami Intl altimeter setting. For uncompensated Baro-VNAV systems, LNAV/VNAV NA below -15°C (5°F) or above 43°C (109°F). DME/DME RNP-0.3 NA. Helicopter visibility reduction below ¾ SM NA. When local altimeter setting not received, use Miami Intl altimeter setting and increase all DA/MDA 20 feet and Circling Cat D visibility ¼ SM. For inop MALSRL, increase LNAV/VNAV all Cats visibility to 1 mile, LNAV Cats A and B visibility to 1 mile and Cats C and D visibility to 1½ miles. For inop MALSRL, when using Miami Intl altimeter setting, increase LPV all Cats visibility to ¾ mile, LNAV/VNAV all Cats visibility to 1½ miles and LNAV Cats A and B visibility to 1 mile. Inop table does not apply to LPV all Cats. Caution: Lights on highway 0.7 NM north may be mistaken for runway.

**MALSRL**

**MISSED APPROACH:**  
Climb to 2000 direct JOLYN and on track 076° to JANUS and hold.

ATIS <b>125.9</b>	MIAMI APP CON <b>128.6 306.975</b>	OPA LOCKA TOWER * <b>134.675 (CTAF) 0</b>	GND CON <b>120.025</b>	CLNC DEL <b>119.2</b>	GCO <b>119.45</b>
----------------------	---------------------------------------	--	---------------------------	--------------------------	----------------------



CATEGORY	A	B	C	D
LPV DA		258-¾	250 (300-¾)	
LNAV/VNAV DA		321-¾	313 (400-¾)	
LNAV MDA		420-¾	412 (500-¾)	
CIRCLING	540-1	532 (600-1)	620-1¾ 612 (700-1¾)	740-2¼ 732 (800-2¼)

MIRL Rwy 9R-27L  
HIRL Rws 9L-27R and 12-30 **0**

SE-3, 15 MAY 2025 to 12 JUN 2025

SE-3, 15 MAY 2025 to 12 JUN 2025