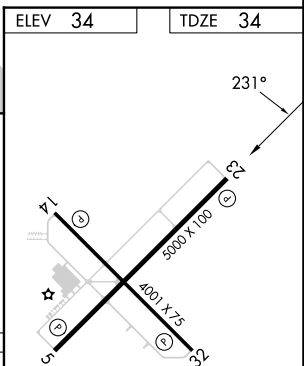
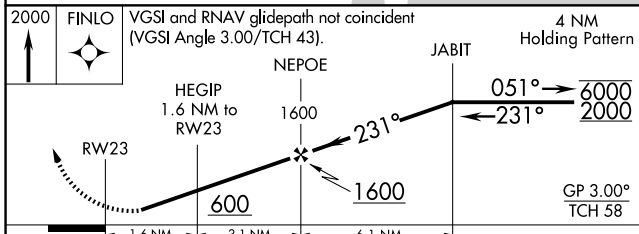
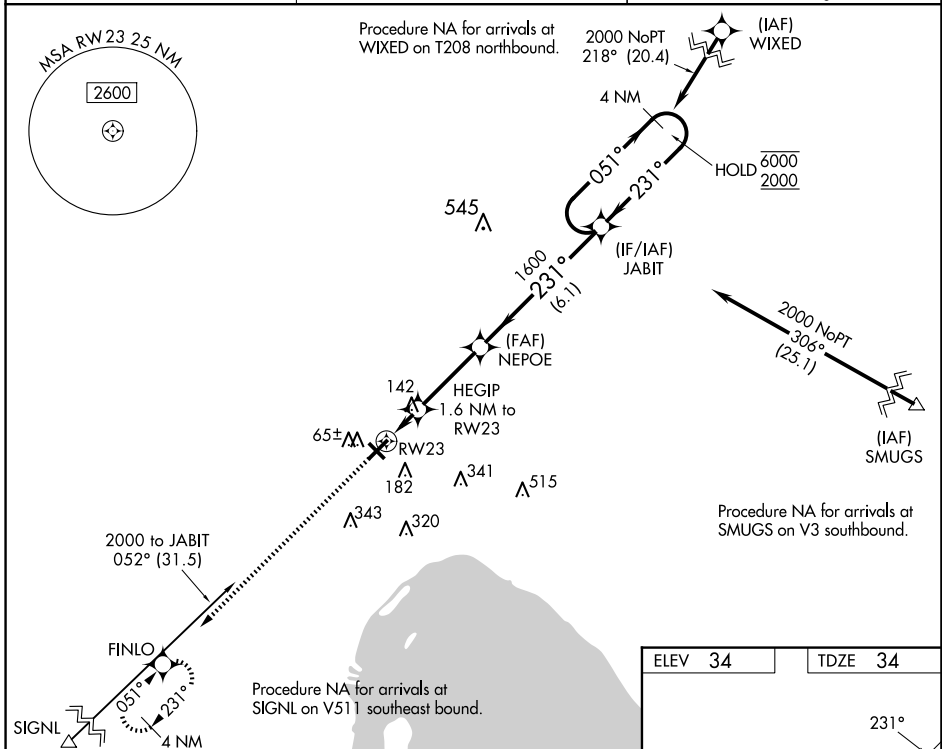


WAAS CH <b>58117</b> <b>W23A</b>	APP CRS <b>231°</b>	Rwy Idg TDZE <b>34</b> Apt Elev <b>34</b>	<b>5000</b>
--	------------------------	---	-------------

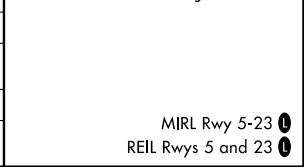
# RNAV (GPS) RWY 23

OKEECHOBEE COUNTY (OBE)

RNP APCH - GPS.		MISSED APPROACH: Climb to 2000 direct FINLO and hold.
<p><b>▲</b> Procedure NA at night. For uncompensated Baro-VNAV systems, LNAV/VNAV NA below -1.5°C or above 54°C. Baro-VNAV NA when using VRB altimeter setting. Rwy 23 helicopter visibility reduction below 1 SM NA.</p>		
AWOS-3 <b>118.675</b>	MIAMI CENTER <b>132.25 370.9</b>	UNICOM <b>123.0 (CTAF) 0</b>



CATEGORY	A	B	C	D
LPV DA		320-1	286 (300-1)	
LNAV/VNAV DA		435-1 $\frac{1}{8}$	401 (500-1 $\frac{1}{8}$ )	
LNAV MDA		400-1	366 (400-1)	
CIRCLING	500-1	466 (500-1)	660-1 $\frac{3}{4}$ 626 (700-1 $\frac{3}{4}$ )	660-2 626 (700-2)



SE-3, 15 MAY 2025 to 12 JUN 2025

SE-3, 15 MAY 2025 to 12 JUN 2025