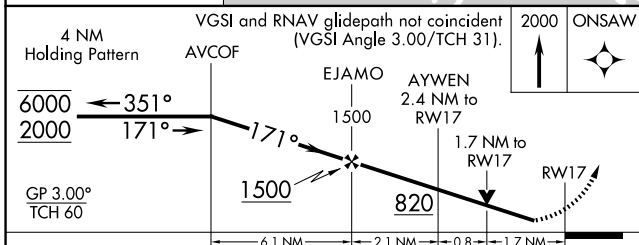
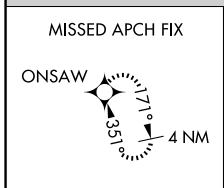
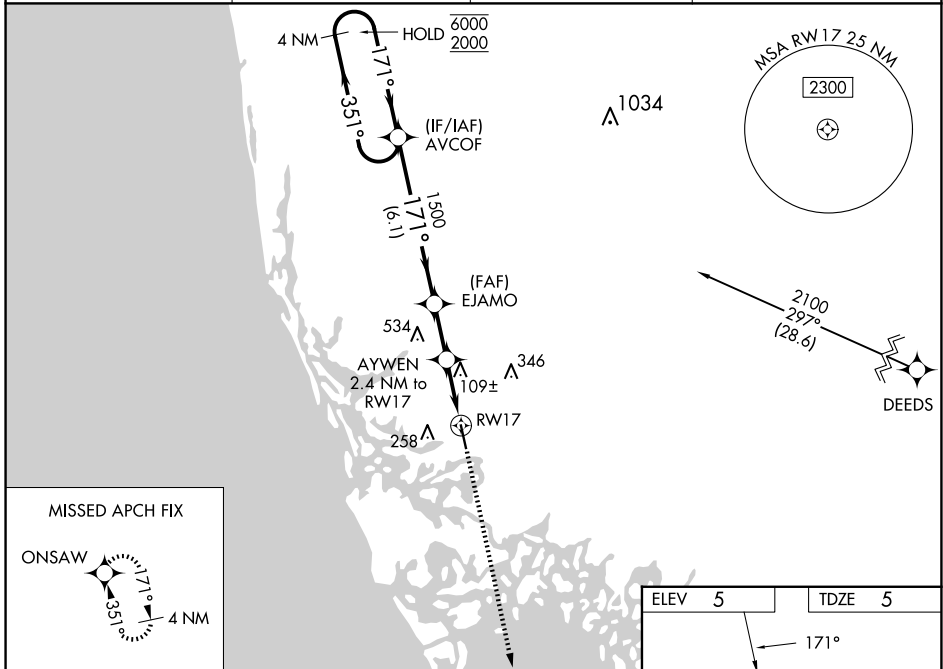


WAAS CH 93516 W17A	APP CRS 171°	Rwy Idg 5000 TDZE 5 Apt Elev 5
--	------------------------	---

RNAV (GPS) RWY 17

MARCO ISLAND EXEC (MKY)

RNP APCH-GPS.			MISSED APPROACH: Climb to 2000 direct ONSAW and hold.
<p>▼ Baro-VNAV and VDP NA when using APF altimeter setting. Rwy 17 helicopter visibility reduction below 3/4 SM NA. For uncompensated Baro-VNAV systems, LNAV/VNAV NA below 2°C or above 54°C. When local altimeter setting not received, use APF altimeter setting and increase LPV DA to 326 feet; increase LNAV/VNAV DA to 484 feet; increase all MDAs 40 feet and visibility Cat C 1/4 SM.</p>			
AWOS-3PT 120.075	FORT MYERS APP CON * 124.125 371.85	CLNC DEL 120.8	UNICOM 122.7 (CTAF) 0



ELEV 5	TDZE 5
171°	
REIL Rwy 17 and 35 0	
MIRL Rwy 17-35 0	

CATEGORY	A	B	C	D
LPV DA		300-1	295 (300-1)	
LNAV/VNAV DA		458-1½	453 (500-1½)	
LNAV MDA	560-1	555 (600-1)	560-1½ 555 (600-1½)	560-1¾ 555 (600-1¾)
CIRCLING	620-1	615 (700-1)	660-1¾ 655 (700-1¾)	840-2¾ 835 (900-2¾)

SE-3, 15 MAY 2025 to 12 JUN 2025

SE-3, 15 MAY 2025 to 12 JUN 2025