

MIAMI, FLORIDA

AL-257 (FAA)

25107

APP CRS 124°	Rwy Idg 8579
	TDZE 8
	Apt Elev 9

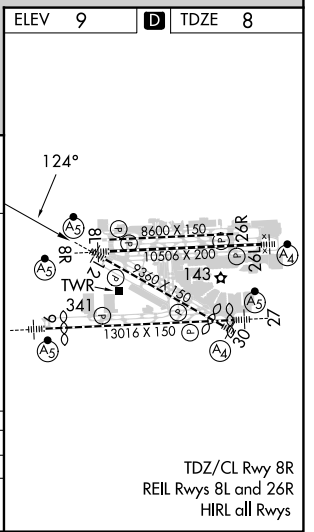
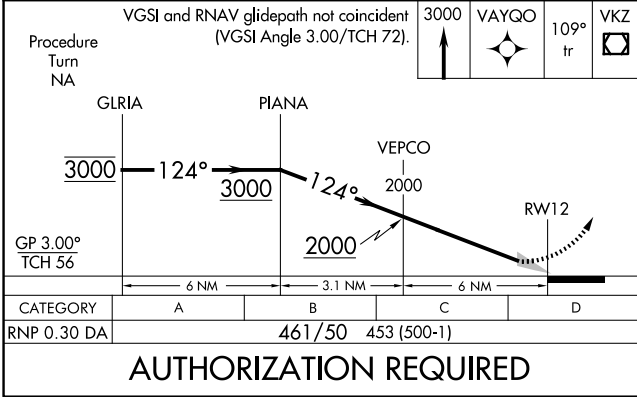
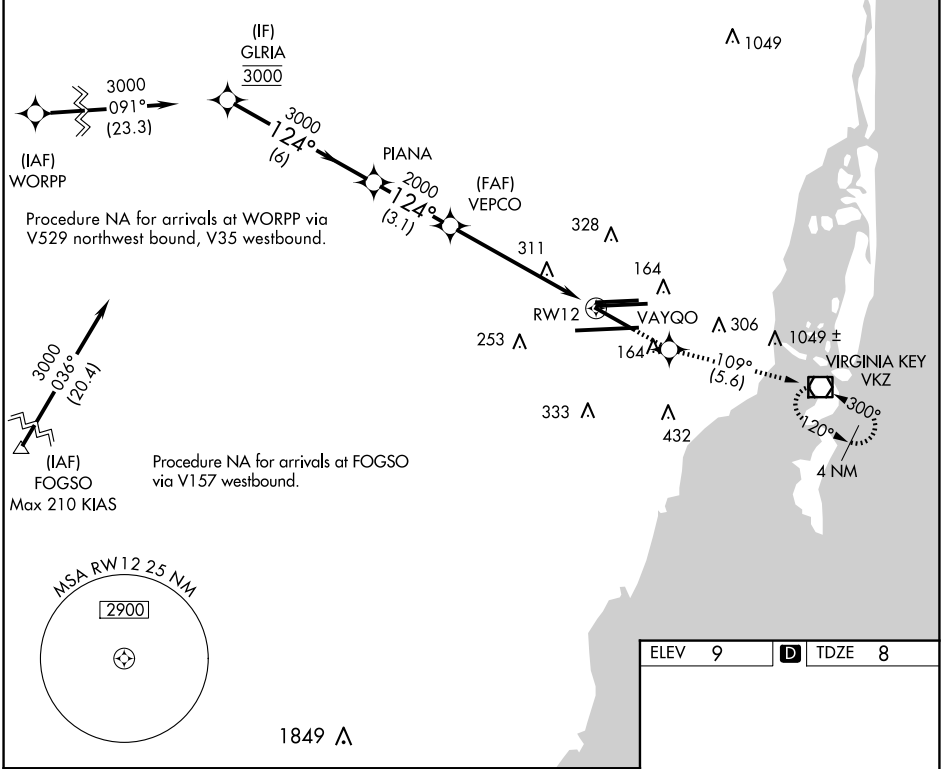
RNAV (RNP) Y RWY 12

MIAMI INTL (MIA)

GPS Required. For inoperative MALSR, increase 0.30 all Cats visibility to 1½. For uncompensated Baro-VNAV systems, procedure NA below 6°C (42°F) or above 49°C (120°F).

MALSRL MISSED APPROACH: Climb to 3000 direct VAYQO and via 109° track to VKZ VOR/DME and hold, continue climb-in-hold to 3000.

D-ATIS ARR 119.15 DEP 133.675	MIAMI APP CON 124.85 322.3	MIAMI TOWER 118.3 256.9	GND CON 121.8 (8L/8R/12/26L/26R) 127.5 (9/27/30)	348.6	CLNC DEL 135.35	CPDLC
---	--------------------------------------	-----------------------------------	--	--------------	---------------------------	-------



SE-3, 15 MAY 2025 to 12 JUN 2025

SE-3, 15 MAY 2025 to 12 JUN 2025

MIAMI, FLORIDA
Orig-B 30JUN11

25°48'N-80°17'W

MIAMI INTL (MIA) RNAV (RNP) Y RWY 12