

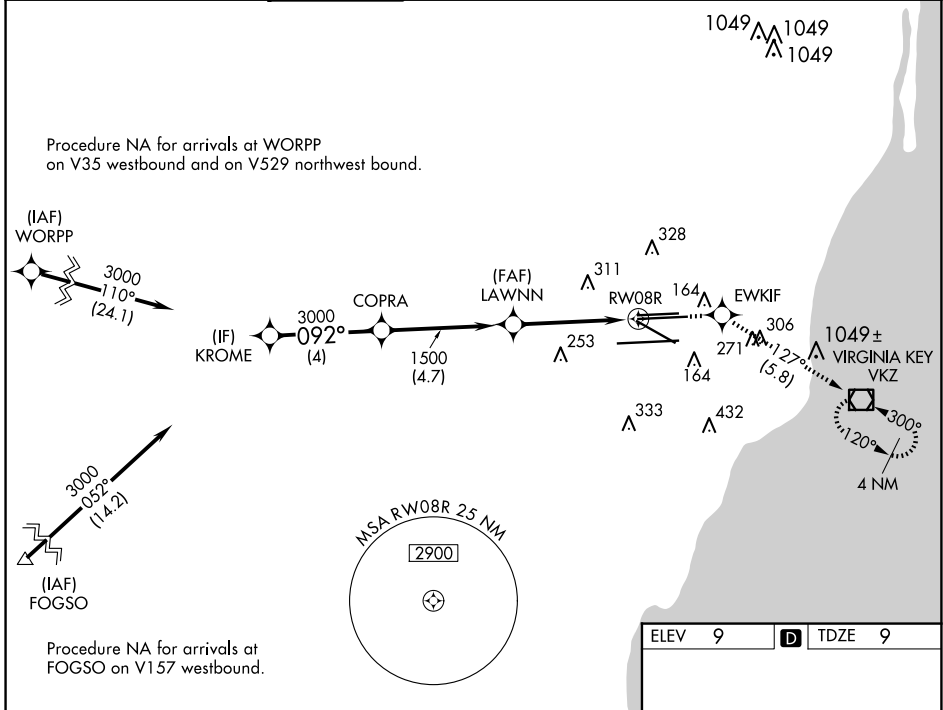
WAAS CH <b>97404</b> <b>W08B</b>	APP CRS <b>092°</b>	Rwy Idg <b>10506</b> TDZE <b>9</b> Apt Elev <b>9</b>
--	------------------------	--

# RNAV (GPS) Z RWY 8R

MIAMI INTL (MIA)

RNP APCH-GPS. ▼ Rwy 8R helicopter visibility reduction below RVR 4000 NA. For uncompensated Baro-VNAV systems, LNAV/VNAV NA below 8°C or above 54°C. For inop ALS, increase LPV all Cats visibility to RVR 4500 and LNAV Cats A and B visibility to RVR 5500.	MALSR 	MISSED APPROACH: Climb to 3000 direct EWKIF and on track 127° to VKZ VOR/DME and hold, continue climb in-hold to 3000.
--	-----------	--

D-ATIS ARR <b>119.15</b> DEP <b>133.675</b>	MIAMI APP CON <b>124.85 322.3</b>	MIAMI TOWER <b>118.3 256.9</b>	GND CON <b>121.8</b> (8L/8R/12/26L/26R) <b>127.5</b> (9/27/30)	<b>348.6</b>	CLNC DEL <b>135.35</b>	CPDLC
---	--------------------------------------	-----------------------------------	--	--------------	---------------------------	-------



SE-3, 15 MAY 2025 to 12 JUN 2025

SE-3, 15 MAY 2025 to 12 JUN 2025

ELEV 9	<b>D</b> TDZE 9
--------	-----------------

VGSI and RNAV glidepath not coincident (VGSI Angle 3.00/TCH 77).

	3000	EWKIF	tr 127°	VKZ
KROME	COPRA	LAWNN	RW08R	
3000	3000	1500	1.6 NM to RW08R	
GP 3.00° TCH 51		1500		
	4 NM	4.7 NM	2.9 NM	1.6 NM
CATEGORY	A	B	C	D
LPV DA	277/40		268 (300-¾)	
LNAV/VNAV DA	531/55		522 (600-1)	
LNAV MDA	600/40 591 (600-¾)		600-1¼ 591 (600-1¼)	

