

MIAMI, FLORIDA

AL-257 (FAA)

24137

WAAS CH 42703 W08A	APP CRS 092°	Rwy Idg TDZE Apt Elev	8600 9 9
--	------------------------	-----------------------------	-------------------------------------

RNAV (GPS) RWY 8L

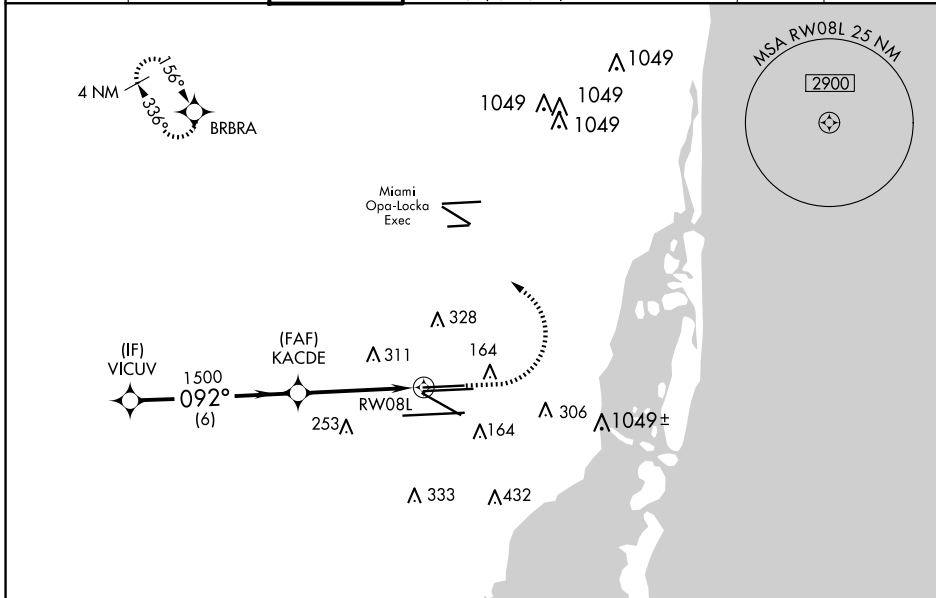
MIAMI INTL (MIA)

RNP APCH.

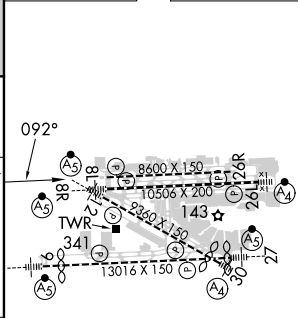
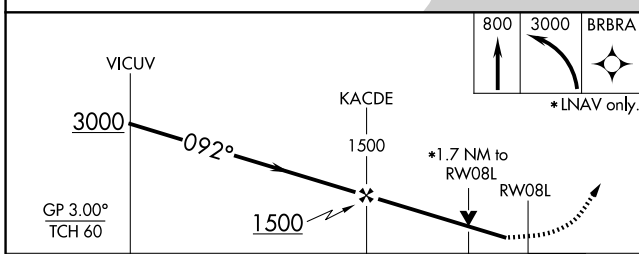
▼ For uncompensated Baro-VNAV systems, LNAV/VNAV NA below 5°C (41°F) or above 54°C (130°F). Simultaneous approach authorized with Rwy 9. Rwy 8L helicopter visibility reduction below 3/4 SM NA. LNAV procedure NA during simultaneous operations. Use of FD or AP providing RNAV track guidance required during simultaneous operations.

MISSED APPROACH: Climb to 800 then climbing left turn to 3000 direct BRBRA and hold.

D-ATIS ARR 119.15 DEP 133.675	MIAMI APP CON 124.85 322.3	MIAMI TOWER 118.3 256.9	GND CON 121.8 (8L/8R/12/26L/26R) 127.5 (9/27/30)	348.6	CLNC DEL 135.35	CPDLC
---	--------------------------------------	-----------------------------------	--	--------------	---------------------------	-------



ELEV 9	D TDZE 9
--------	-----------------



CATEGORY	A	B	C	D
LPV DA		279-1	270 (300-1)	
LNAV/VNAV DA		513-1 3/8	504 (600-1 3/8)	
LNAV MDA	600-1	591 (600-1)	600-1 3/4	591 (600-1 3/4)

TDZ/CL Rwy 8R
REIL Rwys 8L and 26R
HIRL all Rwys

MIAMI, FLORIDA
Amdt 2B 30JAN20

25°48'N-80°17'W

RNAV (GPS) RWY 8L

MIAMI INTL (MIA)

SE-3, 15 MAY 2025 to 12 JUN 2025

SE-3, 15 MAY 2025 to 12 JUN 2025