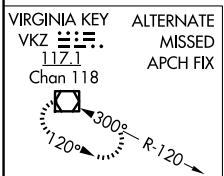
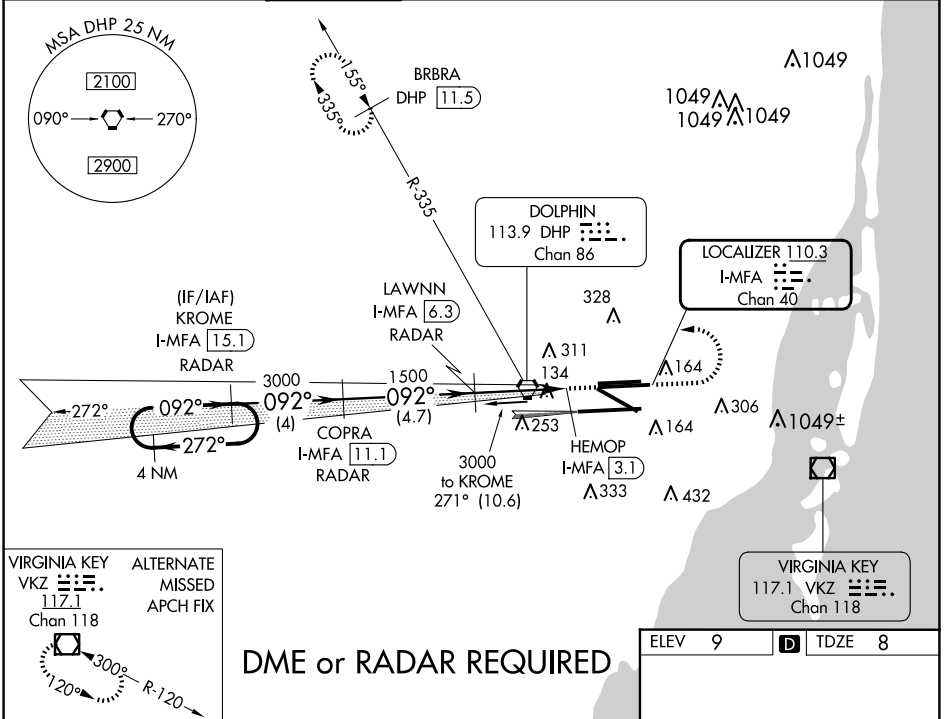


LOC/DME I-MFA <b>110.3</b> Chan <b>40</b>	APP CRS <b>092°</b>	Rwy Idg <b>10506</b> TDZE <b>8</b> Apt Elev <b>9</b>
---	------------------------	--

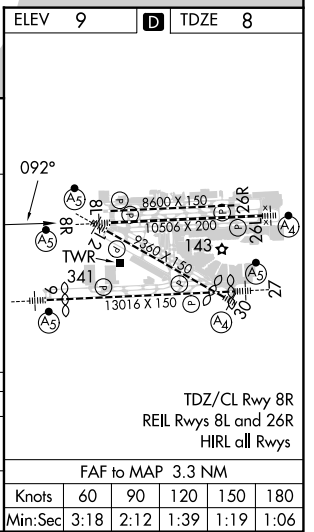
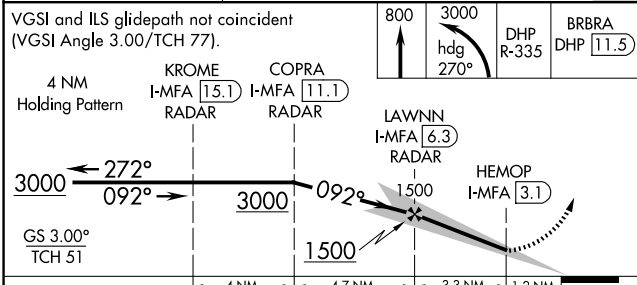
# ILS or LOC RWY 8R

MIAMI INTL (MIA)

DME or RADAR required.		MALSR	MISSED APPROACH: Climb to 800 then climbing left turn to 3000 on heading 270° and on DHP VORTAC R-335 to BRBRA/DHP 11.5 DME and hold.		
For inop MALSR, increase S-ILS 8 all Cats visibility to 1½ mile. Simultaneous approach authorized with Rwy 9.					
D-ATIS ARR <b>119.15</b> DEP <b>133.675</b>	MIAMI APP CON <b>124.85 322.3</b>	MIAMI TOWER <b>118.3 256.9</b>	GND CON <b>121.8</b> (8L/8R/12/26L/26R) <b>127.5</b> (9/27/30)	CLNC DEL <b>348.6</b> <b>135.35</b>	CPDLC



**DME or RADAR REQUIRED**



CATEGORY	A	B	C	D
S-ILS 8R	450/50 442 (500-1)			
S-LOC 8R	560/50 552 (600-1)		560/60 552 (600-1½)	

SE-3, 15 MAY 2025 to 12 JUN 2025

SE-3, 15 MAY 2025 to 12 JUN 2025