

WAAS CH 40212 W36A	APP CRS 005°	Rwy ldg 11601 TDZE 92 Apt Elev 96
--	------------------------	--

RNAV (GPS) RWY 36R

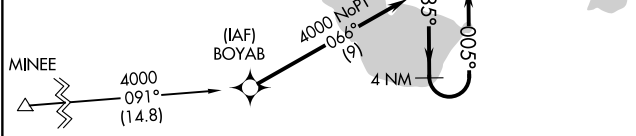
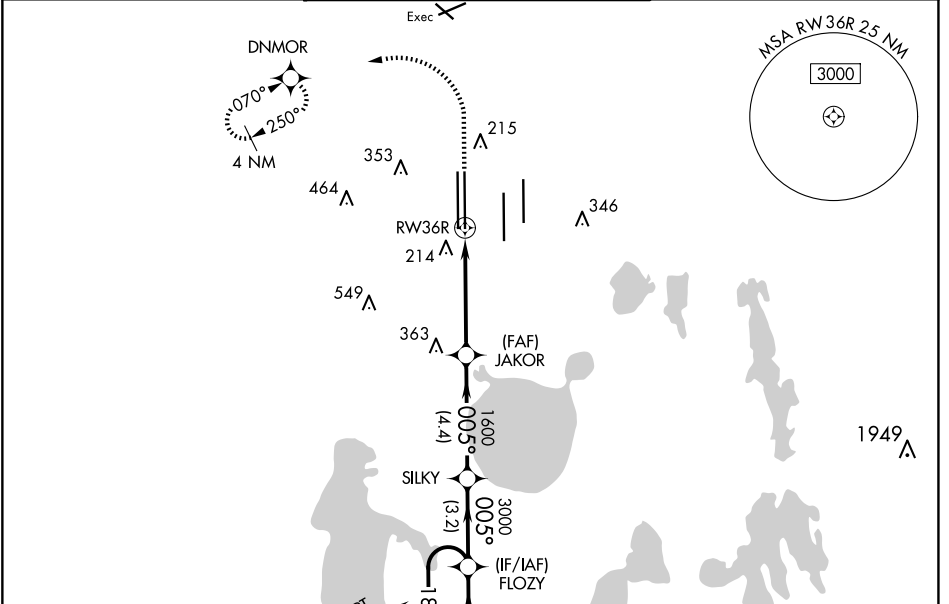
ORLANDO INTL (MCO)

⚠ For uncompensated Baro-VNAV systems, LNAV/VNAV NA below -1°C (31°F) or above 54°C (130°F). DME/DME RNP-0.3 NA. Simultaneous approach authorized. LNAV procedure NA during simultaneous operations. Use of FD or AP providing RNAV track guidance required during simultaneous operations. For inop ALS, increase LNAV/VNAV all Cats visibility to RVR 6000.

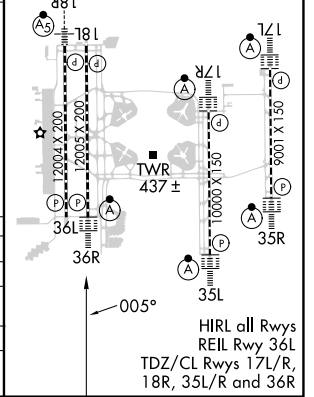
ALSF-2
ⓐ

MISSED APPROACH: Climb to 500 then climbing left turn to 3000 direct DNMOR and hold, continue climb-in-hold to 3000.

D-ATIS ARR 121.25 DEP 120.525	ORLANDO APP CON 124.8 307.0	ORLANDO TOWER 118.45 253.5 (Rwys 17L-35R, 17R-35L) 124.3 253.5 (Rwys 18L-36R, 18R-36L)	GND CON 126.4 (East) 121.8 (West)	CLNC DEL 134.7 341.7	CPDLC
---	---------------------------------------	--	---	--	-------



ELEV 96	D	TDZE 92
---------	---	---------



CATEGORY	A	B	C	D
LPV DA		292/18	200 (200-½)	
LNAV/VNAV DA		454/40	362 (400-¾)	
LNAV MDA	540/24	448 (500-½)	540/45	448 (500-¾)
ⓐ CIRCLING	740-1	644 (700-1)	740-1¾ 644 (700-1¾)	740-2 644 (700-2)

SE-3, 15 MAY 2025 to 12 JUN 2025

SE-3, 15 MAY 2025 to 12 JUN 2025