

WAAS CH <b>66012</b> <b>W18A</b>	APP CRS <b>185°</b>	Rwy Idg <b>12004</b> TDZE <b>96</b> Apt Elev <b>96</b>
--	------------------------	--

# RNAV (GPS) RWY 18L

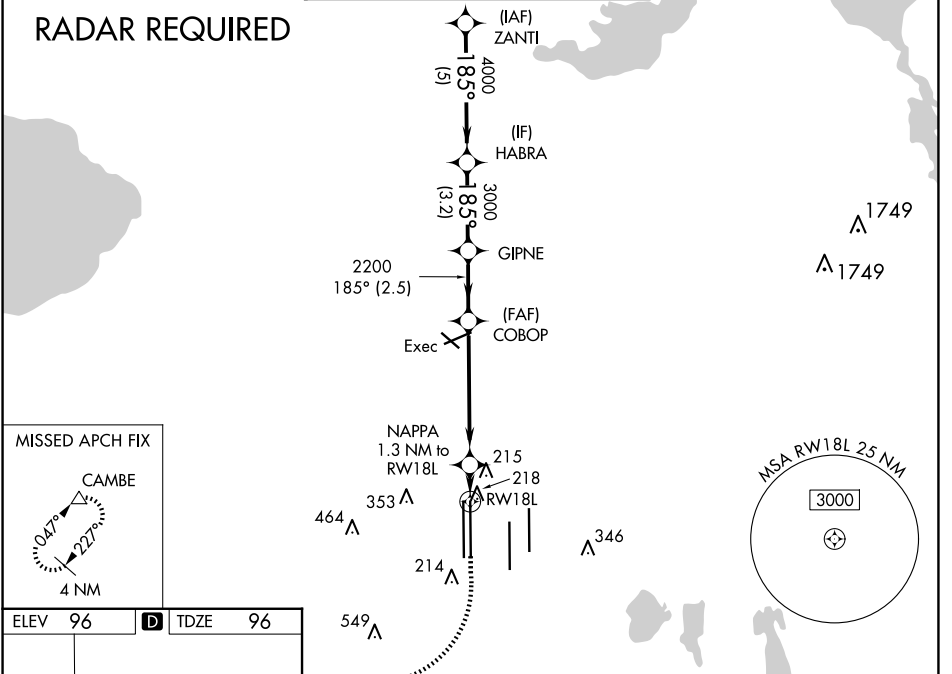
ORLANDO INTL (MCO)

**▽** For uncompensated Baro-VNAV systems, LNAV/VNAV NA below -1°C (31°F) or above 54°C (130°F). DME/DME RNP-0.3 NA. Simultaneous approach authorized with Rwy 17L/R. LNAV procedure NA during simultaneous operations. Use of FD or AP providing RNAV track guidance required during simultaneous operations.

**MISSED APPROACH:** Climb to 500 then climbing right turn to 4000 direct CAMBE and hold, continue climb-in-hold to 4000.

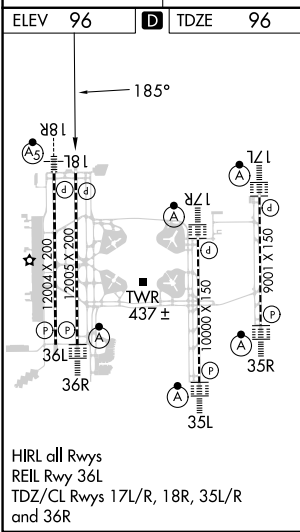
D-ATIS ARR <b>121.25</b> DEP <b>120.525</b>	ORLANDO APP CON <b>124.8 307.0</b>	ORLANDO TOWER <b>118.45 253.5</b> (Rwys 17L-35R, 17R-35L) <b>124.3 253.5</b> (Rwys 18L-36R, 18R-36L)	GND CON <b>126.4</b> (East) <b>121.8</b> (West)	CLNC DEL <b>134.7</b> <b>341.7</b>	CPDLC
---	---------------------------------------	--	---	--	-------

## RADAR REQUIRED



SE-3, 15 MAY 2025 to 12 JUN 2025

SE-3, 15 MAY 2025 to 12 JUN 2025



VGSI and RNAV glidepath not coincident (VGSI Angle 3.00/TCH 71).

CATEGORY	A	B	C	D
LPV DA		296/40	200 (200-¾)	
LNAV/VNAV DA		398/50	302 (400-1)	
LNAV MDA	480/55	384 (400-1)	480/60	384 (400-1¼)
<b>C</b> CIRCLING	740-1	644 (700-1)	740-1¾ 644 (700-1¾)	740-2 644 (700-2)