

LOC/DME I-ARK <b>110.95</b> Chan 46(Y)	APP CRS <b>185°</b>	Rwy Idg TDZE Apt Elev	<b>9001</b> <b>90</b> <b>96</b>
--	------------------------	-----------------------------	---------------------------------------

**ILS RWY 17L (SA CAT I)**  
ORLANDO INTL (MCO)

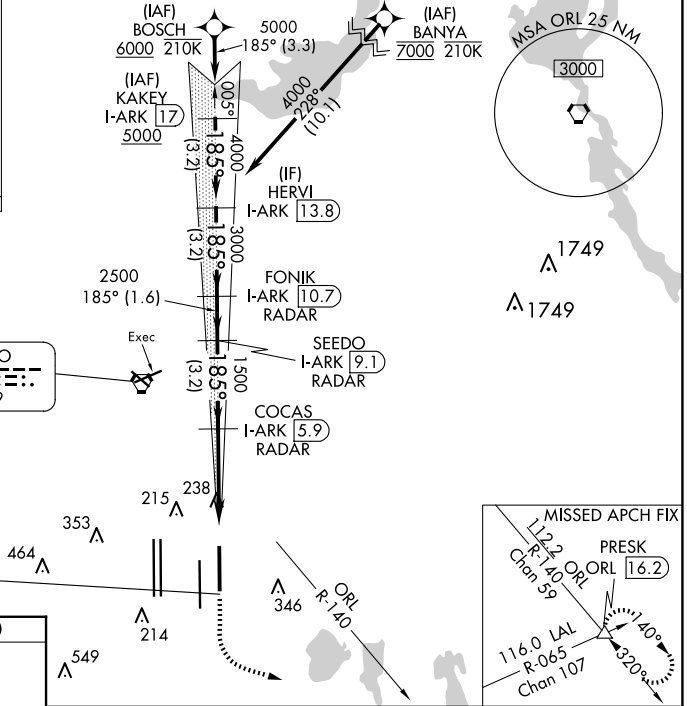
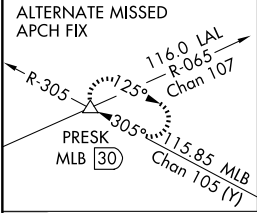
RNAV 1-DME/DME/IRU or GPS or RADAR required for procedure entry. DME or RADAR required.

ALSF-2

MISSED APPROACH: Climb to 500 then climbing left turn to 3000 on heading 100° and ORL VORTAC R-140 to PRESK INT/ORL 16.2 DME and hold, continue climb-in-hold to 3000.

⚠ Bright lights on highway midway between Rwy 17L and Rwy 17R may be mistaken for runway lights. Simultaneous approach authorized. Requires specific OPSPEC, MSPEC, or LOA approval.

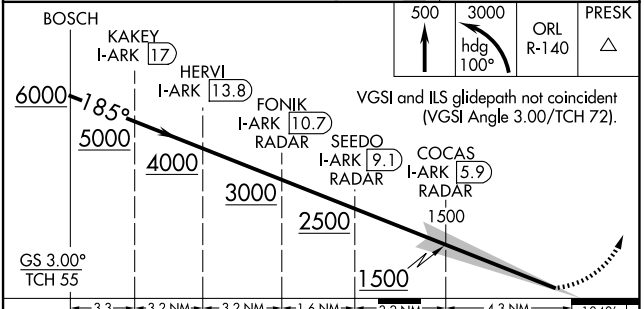
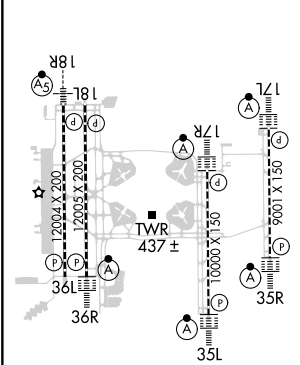
D-ATIS ARR <b>121.25</b> DEP <b>120.525</b>	ORLANDO APP CON <b>124.8 307.0</b>	ORLANDO TOWER <b>118.45 253.5</b> (Rwys 17L-35R,17R-35L) <b>124.3 253.5</b> (Rwys 18L-36R,18R-36L)	GND CON <b>126.4</b> (East) <b>121.8</b> (West)	CLNC DEL <b>134.7</b> <b>341.7</b>	CPDLC
---	---------------------------------------	--	---	--	-------



**ORLANDO**  
112.2 ORL  
Chan 59

**LOCALIZER 110.95**  
I-ARK  
Chan 46(Y)

ELEV 96	<b>D</b>	TDZE 90
---------	----------	---------



CATEGORY	A	B	C	D
S-ILS 17L	RA 145/14 150 DA 240			
<b>SA CATEGORY I ILS - SPECIAL AIRCREW &amp; AIRCRAFT CERTIFICATION REQUIRED</b>				

HIRL all Rwys  
REIL Rwy 36L  
TDZ/CL Rwys 17L/R, 18R, 35L/R and 36R

SE-3, 15 MAY 2025 to 12 JUN 2025

SE-3, 15 MAY 2025 to 12 JUN 2025