

MARIANNA, FLORIDA

AL-248 (FAA)

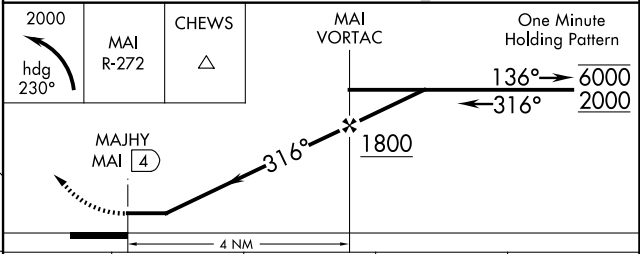
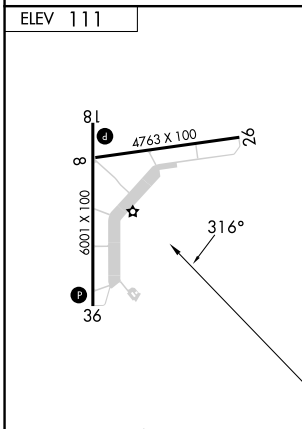
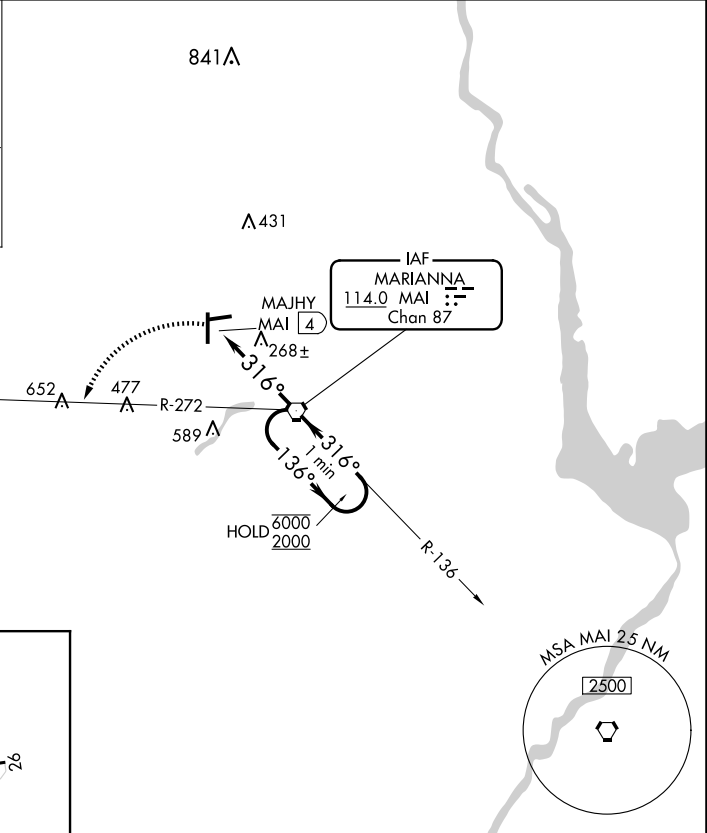
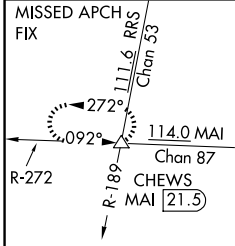
25079

VORTAC MAI <b>114.0</b> Chan 87	APP CRS <b>316°</b>	Rwy Ldg TDZE N/A Apt Elev 111
---------------------------------------	------------------------	--

**VOR-A**  
MARIANNA MUNI (MAI)

<p><b>⚠</b> Circling to Rwy 8, 26 NA at night. When local altimeter setting not received, use BGE altimeter setting: increase all MDAs 80 feet and Circling Cat D visibility ¼ SM.</p>	<p><b>MISSED APPROACH:</b> Climbing left turn to 2000 on heading 230° and MAI VORTAC R-272 to CHEWS INT/MAI 21.5 DME and hold.</p>
--	--

ASOS <b>133.525</b>	CAIRNS APP CON ★ <b>133.75 270.35</b>	UNICOM <b>123.0 (CTAF) 0</b>
------------------------	--	---------------------------------



MIRL Rwy 18-36

FAF to MAP 4 NM					
Knots	60	90	120	150	180
Min:Sec	4:00	2:40	2:00	1:36	1:20

CATEGORY	A	B	C	D
<b>CIRCLING</b>	620-1	509 (600-1)	620-1½ 509 (600-1½)	900-2½ 789 (800-2½)

MARIANNA, FLORIDA  
Amdt 13 20MAR25

30°50'N-85°11'W

MARIANNA MUNI (MAI)  
**VOR-A**

SE-3, 15 MAY 2025 to 12 JUN 2025

SE-3, 15 MAY 2025 to 12 JUN 2025