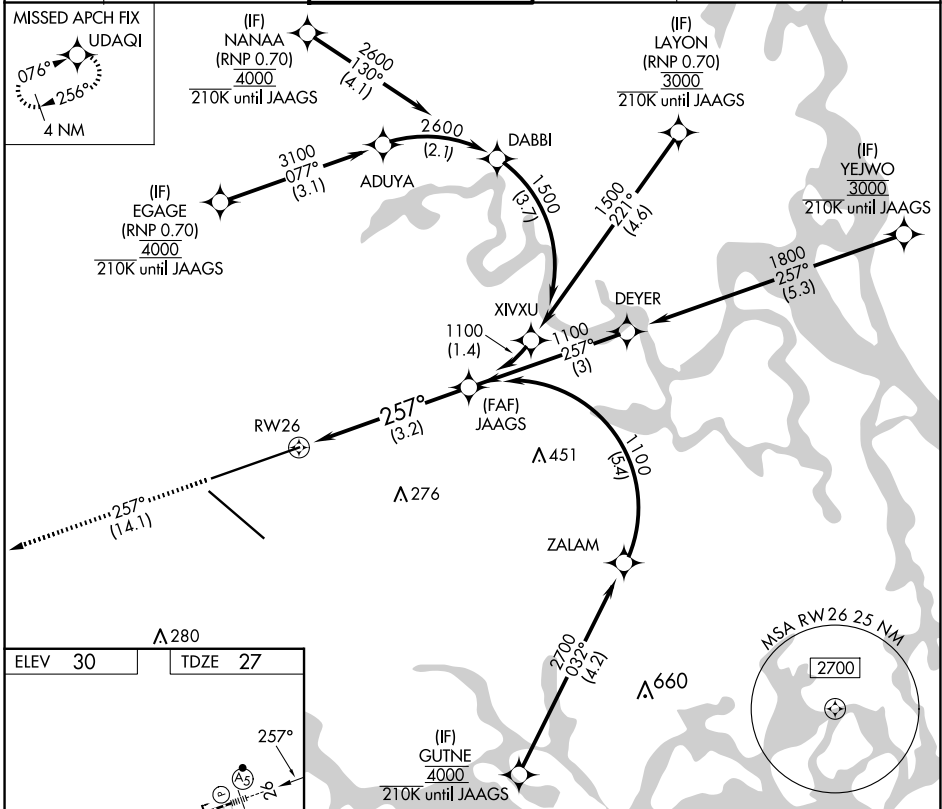


APP CRS	Rwy Idg	10000
257°	TDZE	27
	Apt Elev	30

RNAV (RNP) Y RWY 26

JACKSONVILLE INTL (JAX)

RNP AR APCH-GPS.		MALSR		MISSED APPROACH: Climb to 2000 on track 257° to UDAQI and hold.	
For uncompensated Baro-VNAV systems, procedure NA below -5°C or above 54°C.					
D-ATIS	JACKSONVILLE APP CON	JACKSONVILLE TOWER	GND CON	CLNC DEL	CPDLC
125.85	119.0 269.9	118.3 317.7	121.9 348.6	119.5 290.275	



SE-3, 15 MAY 2025 to 12 JUN 2025

SE-3, 15 MAY 2025 to 12 JUN 2025

ELEV 30	TDZE 27
---------	---------

REIL Rwy 32
TDZ/CL Rwy 8, 14, and 26
HIRL Rwy 8-26 and 14-32

2000 UDAQI VGSi and RNAV glidepath not coincident (VGSi Angle 3.00/TCH 70).

See planview for multiple IF locations.

RWY 26 UDAQI JAAGS 1100

GP 3.00° TCH 49

CATEGORY	A	B	C	D
RNP 0.30 DA	419/35 392 (400-5%)			

AUTHORIZATION REQUIRED