

APP CRS <b>191°</b>	Rwy Idg TDZE Apt Elev	<b>5000</b> <b>54</b> <b>65</b>
------------------------	-----------------------------	---------------------------------------

# RNAV (GPS) RWY 19

INVERNESS (INF')

RNP APCH.

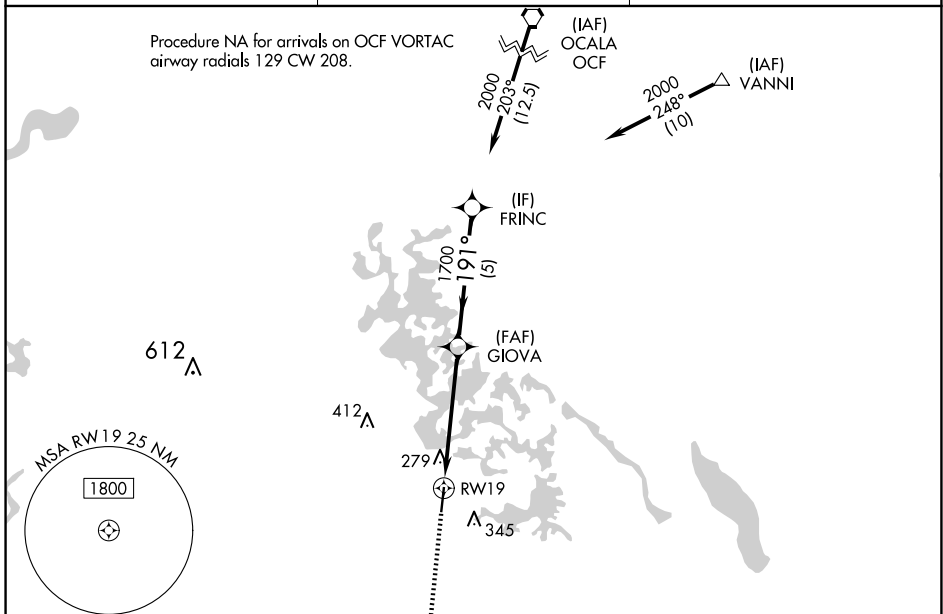
**⚠** **⚠** Rwy 19 helicopter visibility reduction below 1 SM NA.

MISSED APPROACH: Climb to 2000 direct BOWSK and on track 176° to REBEC and hold.

AWOS-3  
**119.975**

JACKSONVILLE APP CON  
**118.6 251.15**

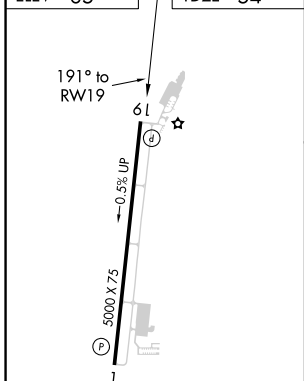
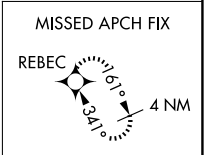
UNICOM  
**122.725 (CTAF)** **📻**



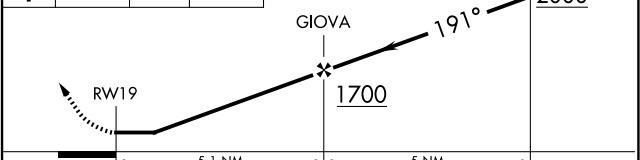
SE-3, 15 MAY 2025 to 12 JUN 2025

SE-3, 15 MAY 2025 to 12 JUN 2025

ELEV 65	TDZE 54
---------	---------



2000	BOWSK	REBEC	Visual Segment - Obstacles.	FRINC
↑	⬠	tr 176°		⬠



CATEGORY	A	B	C	D
LNAV MDA	580-1	526 (600-1)	580-1½ 526 (600-1½)	NA
CIRCLING	660-1	595 (600-1)	660-1½ 595 (600-1½)	NA

MIRL Rwy 1-19 **📻**  
REIL Rwy 1 and 19 **📻**