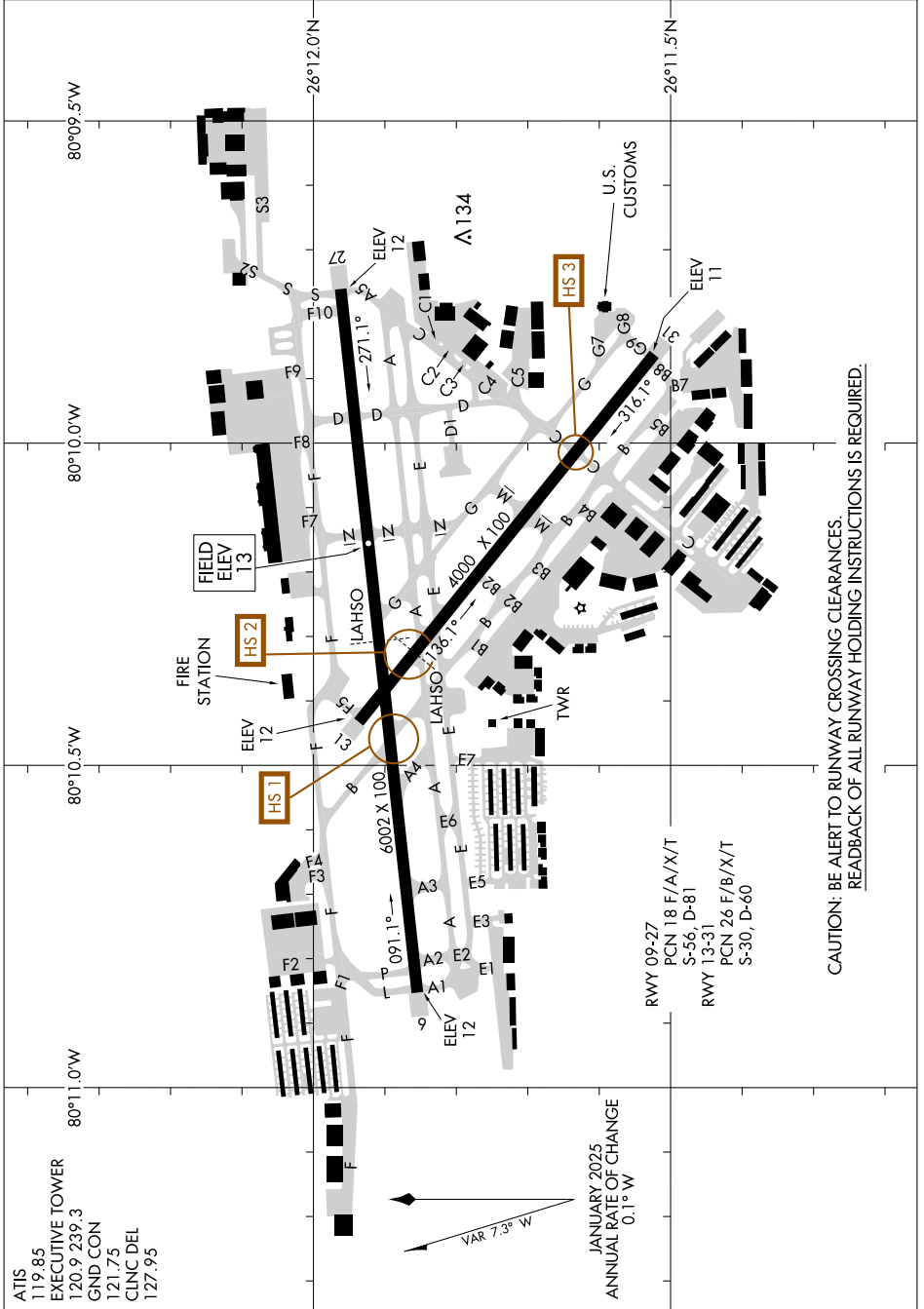


AIRPORT DIAGRAM

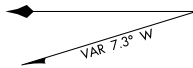
AL-5942 (FAA)

FORT LAUDERDALE EXEC (F'X'E)
FORT LAUDERDALE, FLORIDA

SE-3, 15 MAY 2025 to 12 JUN 2025



ATIS 119.85
 EXECUTIVE TOWER 120.9 239.3
 GND CON 121.75
 CLNC DEL 127.95



JANUARY 2025
 ANNUAL RATE OF CHANGE
 0.1° W

RWY 09-27 PCN 18 F/A/X/T
 S-56, D-81
 RWY 31-16 PCN 26 F/B/X/T
 S-30, D-60

CAUTION: BE ALERT TO RUNWAY CROSSING CLEARANCES
 READBCK OF ALL RUNWAY HOLDING INSTRUCTIONS IS REQUIRED.

AIRPORT DIAGRAM

FORT LAUDERDALE, FLORIDA
FORT LAUDERDALE EXEC (F'X'E)

SE-3, 15 MAY 2025 to 12 JUN 2025