

WAAS CH <b>69529</b> <b>W10A</b>	APP CRS <b>097°</b>	Rwy Idg <b>6492</b> TDZE <b>23</b> Apt Elev <b>23</b>
--	------------------------	---

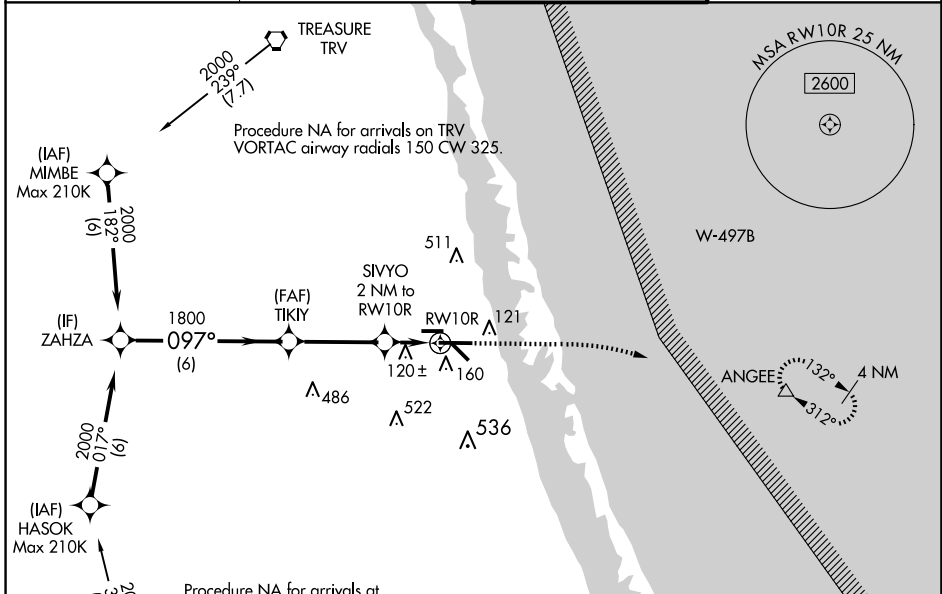
# RNAV (GPS) RWY 10R

TREASURE COAST INTL (FPR)

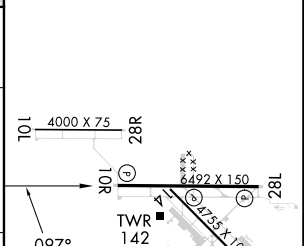
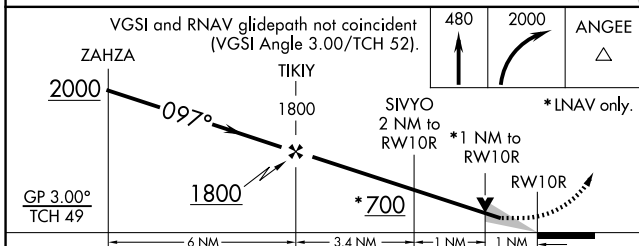
**⚠** Baro-VNAV NA when using Vero Beach altimeter setting. For uncompensated Baro-VNAV systems, LNAV/VNAV NA below -1°C (31°F) or above 54°C (130°F). When local altimeter setting not received, use Vero Beach altimeter setting and increase all DA 23 feet and all MDA 40 feet; increase LPV all Cats, LNAV/VNAV all Cats and LNAV Cats C/D visibility 1/8 mile, and increase Circling Cat C/D visibility 1/4 mile. DME/DME RNP-0.3 NA. VDP NA with Vero Beach altimeter setting.

**⚠** MISSED APPROACH: Climb to 480 then climbing right turn to 2000 direct ANGEE and hold.

ATIS <b>134.825</b>	PALM BEACH APP CON <b>132.8</b>	FORT PIERCE TOWER ★ <b>128.2 (CTAF) 0</b>	GND CON (GCO) <b>119.55</b>
------------------------	------------------------------------	--	--------------------------------



ELEV <b>23</b>	TDZE <b>23</b>
----------------	----------------



CATEGORY	A	B	C	D
LPV DA		273-3/4	250 (300-3/4)	
LNAV/VNAV DA		348-1	325 (400-1)	
LNAV MDA		380-1	357 (400-1)	
CIRCLING	460-1	480-1	880-2 1/2	880-2 3/4
	437 (500-1)	457 (500-1)	857 (900-2 1/2)	857 (900-2 3/4)

REIL Rwy 10R and 28L 0  
MIRL all Rwy 0

SE-3, 15 MAY 2025 to 12 JUN 2025

SE-3, 15 MAY 2025 to 12 JUN 2025