

LOC/DME I-ADI <b>111.75</b>	APP CRS <b>276°</b>	Rwy Idg <b>8000</b>
Chan <b>54 (Y)</b>		TDZE <b>65</b>
		Apt Elev <b>65</b>

# ILS or LOC RWY 28L

FORT LAUDERDALE/HOLLYWOOD INTL (FLL)

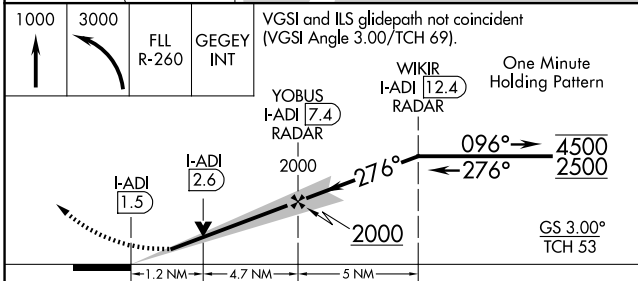
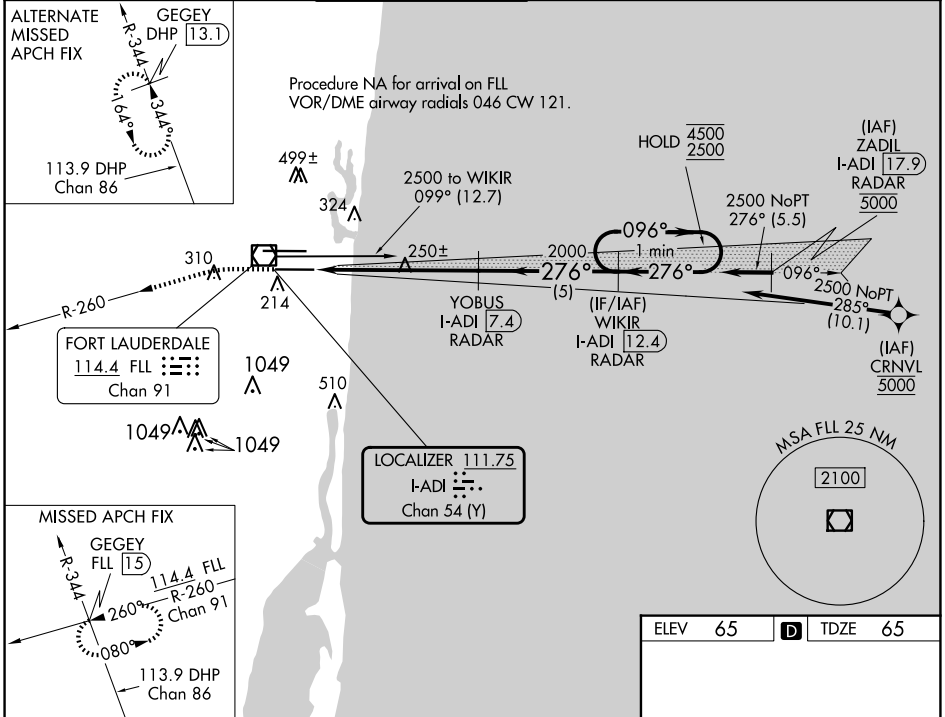
DME or RADAR required. RNP APCH-GPS. From CRNVL. RADAR required for procedure entry at ZADIL.

Inop table does not apply to S-ILS-28L. Simultaneous approach authorized.

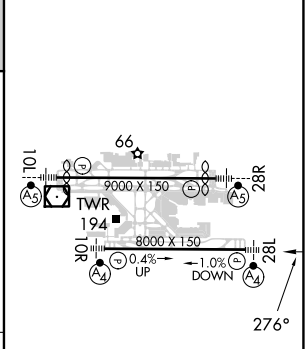
MALSF

MISSED APPROACH: Climb to 1000 then climbing left turn to 3000 on FLL VOR/DME R-260 to GEGEY INT/FLL 15 DME and hold.

D-ATIS <b>135.0</b>	MIAMI APP CON <b>133.775 285.6</b>	<b>FORT LAUDERDALE TOWER</b> <b>119.3 257.8</b>	GND CON <b>121.4</b>	CLNC DEL <b>128.4</b>	CPDLC
------------------------	---------------------------------------	--	-------------------------	--------------------------	-------



ELEV 65	<b>D</b> TDZE 65
---------	------------------



CATEGORY	A	B	C	D
S-ILS 28L	265/40		200 (200-¾)	
S-LOC 28L	500/40	435 (500-¾)	500/50	435 (500-1)
<b>C</b> CIRCLING	680-1	615 (700-1)	800-2 735 (800-2)	800-2½ 735 (800-2½)

Knots	60	90	120	150	180
Min:Sec	5:54	3:56	2:57	2:22	1:58

SE-3, 15 MAY 2025 to 12 JUN 2025

SE-3, 15 MAY 2025 to 12 JUN 2025