

WAAS CH 45620 W31A	APP CRS 319°	Rwy Idg TDZE Apt Elev	5001 42 42
--	------------------------	-----------------------------	---------------------------------------

RNAV (GPS) RWY 31

CROSS CITY (CTY)

RNP APCH - GPS.

⚠ Rwy 31 helicopter visibility reduction below 1 SM NA. Baro-VNAV NA when using X60 altimeter setting. For uncompensated Baro-VNAV systems, LNAV/VNAV NA below 15°C or above 54°C. When local altimeter setting not received, use X60 altimeter setting and increase LPV DA to 383 feet; increase LNAV/VNAV DA to 514 feet and all visibilities ¼ SM. Increase all MDAs 100 feet and LNAV visibility Cats C and D ¼ SM, and Circling visibility Cats C and D ¼ SM. Straight-in Rwy 31 NA at night, Circling Rwy 4, 13, 31 NA at night.

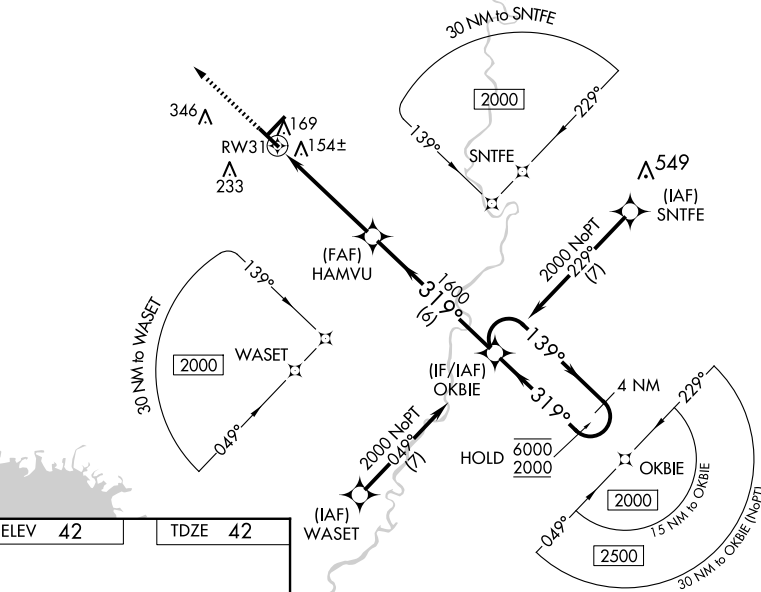
MISSED APPROACH:
Climb to 2000 direct
GRSSO and hold.

AWOS-3PT
120.775

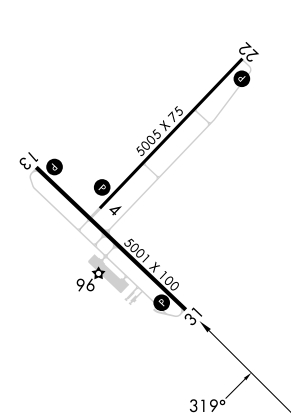
X60 AWOS-3T
118.425

JACKSONVILLE CENTER
127.8 352.0

UNICOM
122.8 (CTAF) **0**

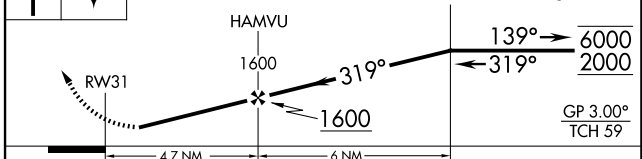


ELEV 42	TDZE 42
---------	---------



MIRL Rwy 13-31
MIRL Rwy 4-22 **0**
REIL Rwy 13 and 31 **0**

2000 GRSSO VGSi and RNAV glidepath not coincident (VGSi Angle 3.00/TCH 36). 4 NM Holding Pattern



CATEGORY	A	B	C	D
LPV DA		292-1	250 (300-1)	
LNAV/VNAV DA		423-1½	381 (400-1½)	
LNAV MDA	500-1	458 (500-1)	500-1¾	458 (500-1¾)
C CIRCLING	500-1 458 (500-1)	520-1 478 (500-1)	660-1¾ 618 (700-1¾)	660-2 618 (700-2)

SE-3, 15 MAY 2025 to 12 JUN 2025

SE-3, 15 MAY 2025 to 12 JUN 2025