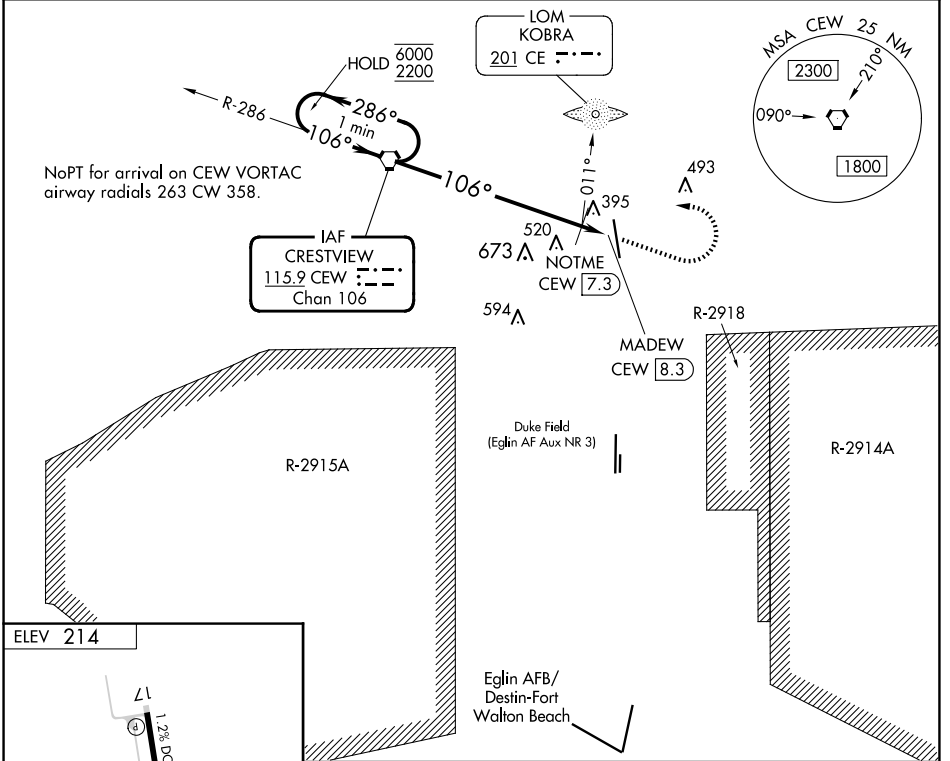


| | | |
|---|------------------------|---|
| VORTAC CEW 115.9 Chan 106 | APP CRS 106° | Rwy ldg TDZE Apt Elev N/A N/A 214 |
|---|------------------------|---|

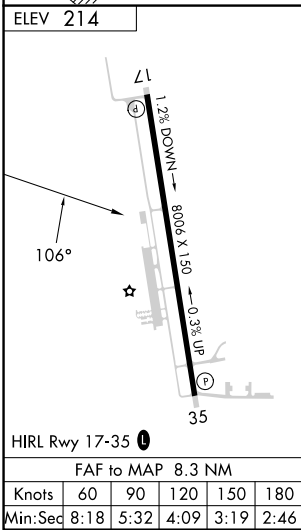
VOR-A
BOB SIKES(CEW)

| | | |
|---|---|---|
| <p>⚠ Circling NA for Cat D west of Rwy 17-35. When local altimeter setting not received, use Eglin AFB altimeter setting and increase all MDA 60 feet and increase Circling Cat C/D visibility ¼ SM.</p> | <p>MISSED APPROACH: Climb to 1200 then climbing left turn to 2200 direct CEW VORTAC and hold.</p> | |
| <p>ASOS 119.275</p> | <p>EGLIN APP CON 124.05 284.65</p> | <p>UNICOM 123.075 (CTAF)</p> |



SE-3, 15 MAY 2025 to 12 JUN 2025

SE-3, 15 MAY 2025 to 12 JUN 2025



| | | | | |
|---|--|-----------------|---------------------|---------------------|
| One Minute Holding Pattern | CEW VORTAC | 1200 | 2200 | CEW |
| 6000 ← 286° | → 106° | | | |
| * 960 when using Eglin AFB altimeter setting. | | | | |
| | | NOTME CEW [7.3] | MADEW CEW [8.3] | |
| | | 7.3 NM | 1 NM | |
| CATEGORY | A | B | C | D |
| C CIRCLING | 900-1 686 (700-1) | | 900-2 686 (700-2) | 900-2¼ 686 (700-2¼) |
| | NOTME FIX MINIMUMS (ADF OR DME REQUIRED) | | | |
| C CIRCLING | 700-1 486 (500-1) | | 820-1¾ 606 (700-1¾) | 840-2 626 (700-2) |