

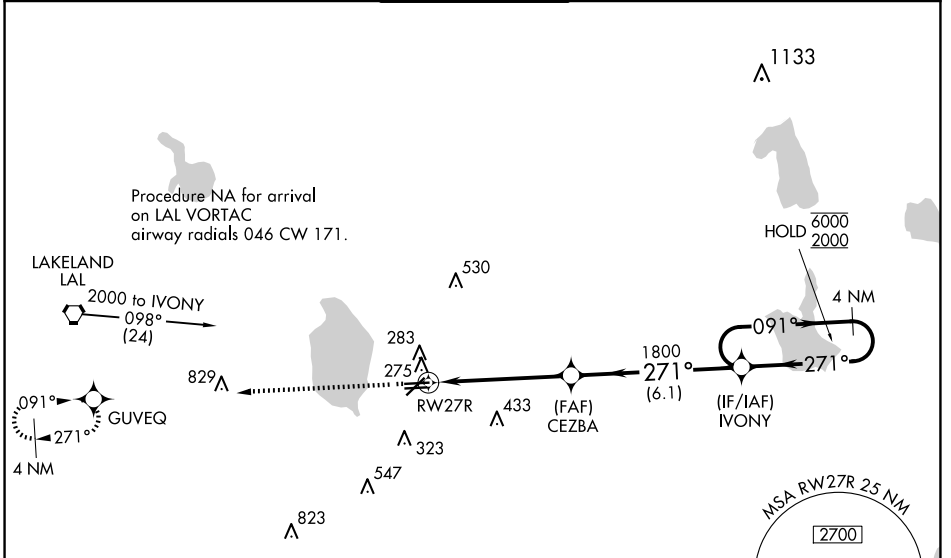
WAAS CH 82412 W27A	APP CRS 271°	Rwy Idg TDZE 125 Apt Elev 125	5000
--	------------------------	---	-------------

RNAV (GPS) RWY 27R

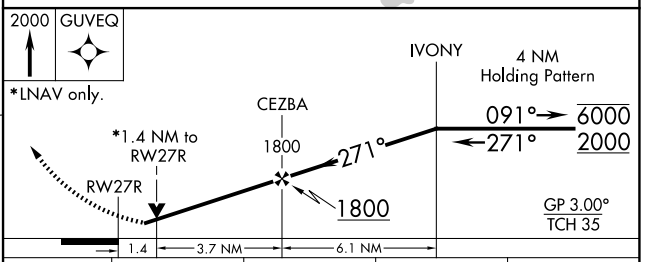
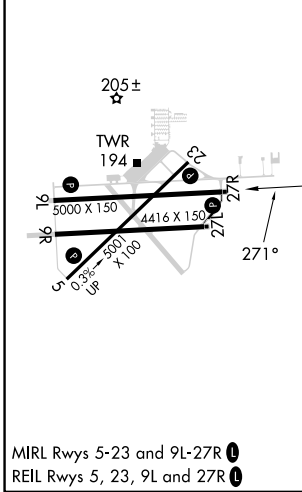
BARTOW EXEC (BOW)

RNP APCH.	<p>MISSED APPROACH: Climb to 2000 direct GUYEQ and hold.</p>
<p>⚠ Rwy 27R helicopter visibility reduction below 3/4 SM NA. When local altimeter setting not received, use Tampa Intl altimeter setting and increase LPV DA to 576 feet, LNAV/VNAV DA to 636 feet and all MDA 120 feet, increase LPV visibility all Cats 1/2 SM, increase LNAV visibility Cat C 1/4 SM, Cat D 1/8 SM. For uncompensated Baro-VNAV systems, LNAV/VNAV NA below -1.5°C or above 54°C. VDP and Baro-VNAV NA when using Tampa Intl altimeter setting.</p>	

AWOS-3 123.775	TAMPA APP CON 120.65 290.3	BARTOW TOWER ★ 121.2 (CTAF)	GND CON 121.9	UNICOM 122.95
--------------------------	--------------------------------------	--	-------------------------	-------------------------



ELEV 125	TDZE 125
----------	----------



CATEGORY	A	B	C	D
LPV DA	470-1 3/4 345 (400-1 1/4)			
LNAV/VNAV DA	530-1 1/2 405 (500-1 1/2)			
LNAV MDA	580-1	455 (500-1)	580-1 3/8 455 (500-1 3/8)	580-1 1/2 455 (500-1 1/2)

SE-3, 15 MAY 2025 to 12 JUN 2025

SE-3, 15 MAY 2025 to 12 JUN 2025