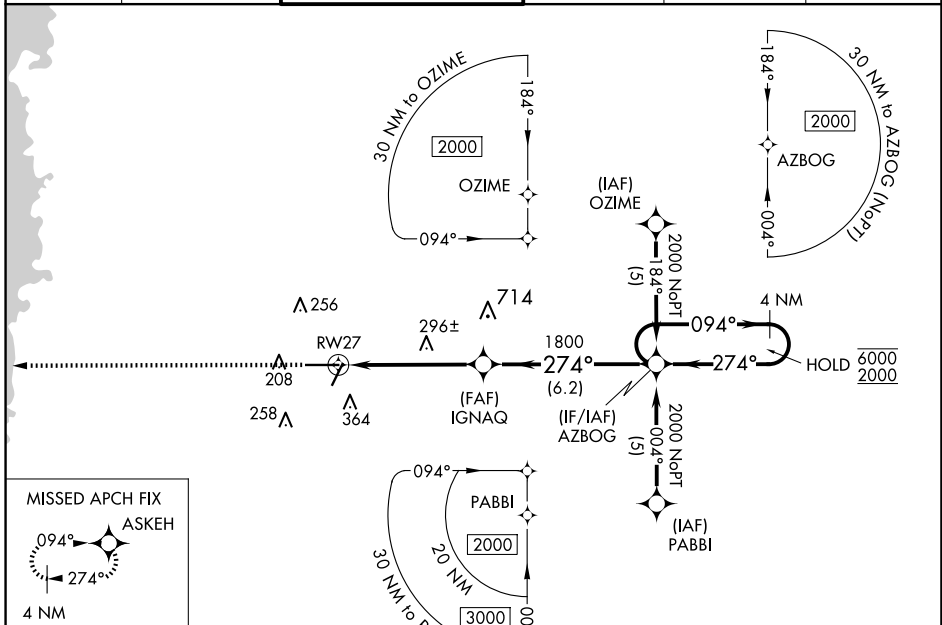


WAAS CH <b>86408</b> <b>W27A</b>	APP CRS <b>274°</b>	Rwy Idg TDZE Apt Elev	<b>7001</b> <b>69</b> <b>76</b>
--	------------------------	-----------------------------	---------------------------------------

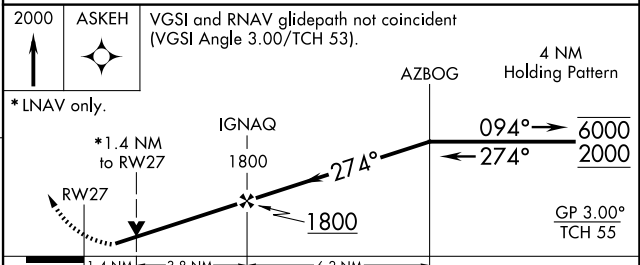
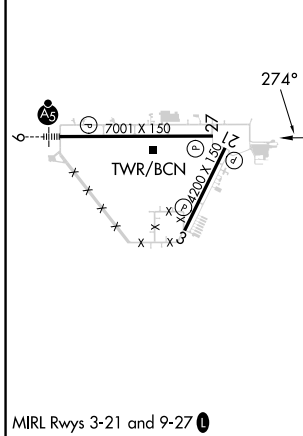
# RNAV (GPS) RWY 27

BROOKSVILLE-TAMPA BAY RGNL (BKV)

RNP APCH.		MISSED APPROACH: Climb to 2000 direct ASKEH and hold.	
<p><b>▽</b> Rwy 27 helicopter visibility reduction below 3/4 SM NA. For uncompensated Baro-VNAV systems, LNAV/VNAV NA below -15°C or above 48°C.</p>			
ASOS <b>134.725</b>	TAMPA APP CON <b>125.3 316.05</b>	BROOKSVILLE TOWER ★ <b>118.55</b> (CTAF) <b>0</b>	GND CON <b>121.4</b>
		CLNC DEL <b>119.125</b> (When twr closed)	UNICOM <b>123.0</b>



ELEV 76	TDZE 69
---------	---------



2000 ASKEH	VGSi and RNAV glidepath not coincident (VGSi Angle 3.00/TCH 53).			
* LNAV only.				
RWY 27				
IGNAQ 1800				
AZBOG 4 NM Holding Pattern				
GP 3.00° TCH 55				
CATEGORY	A	B	C	D
LPV DA		442-1¼	373 (400-1¼)	
LNAV/VNAV DA		595-1¾	526 (600-1¾)	
LNAV MDA	620-1	551 (600-1)	620-1⅝ 551 (600-1⅝)	620-1¾ 551 (600-1¾)

SE-3, 15 MAY 2025 to 12 JUN 2025

SE-3, 15 MAY 2025 to 12 JUN 2025