

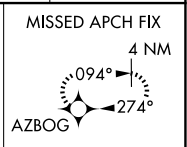
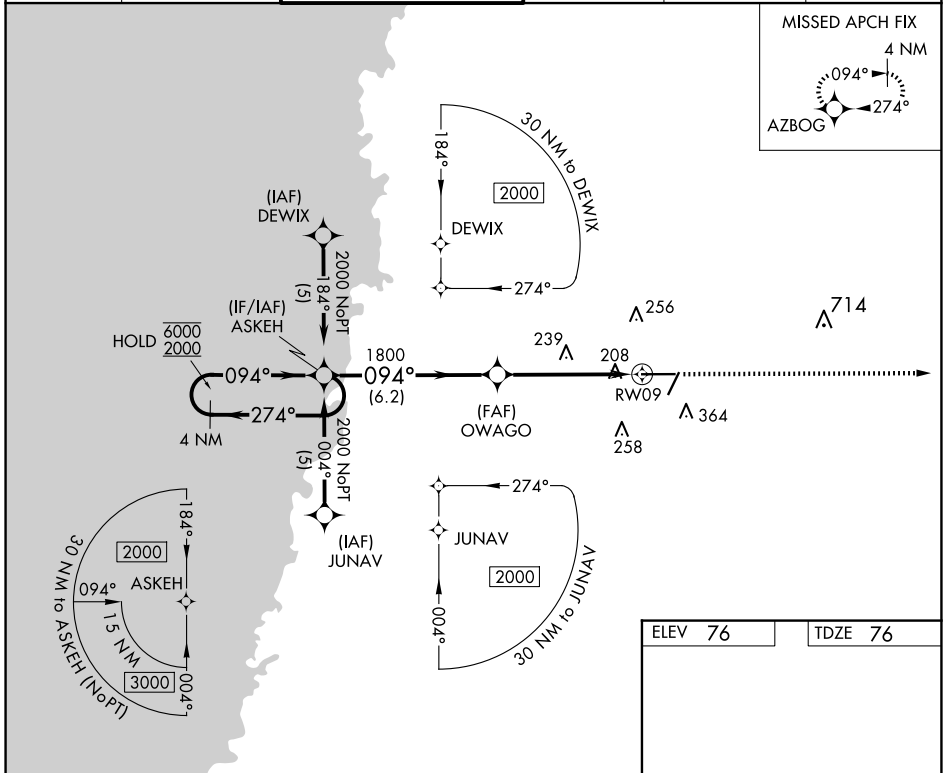
APP CRS	Rwy Idg	7001
094°	TDZE	76
	Apt Elev	76

RNAV (GPS) RWY 9

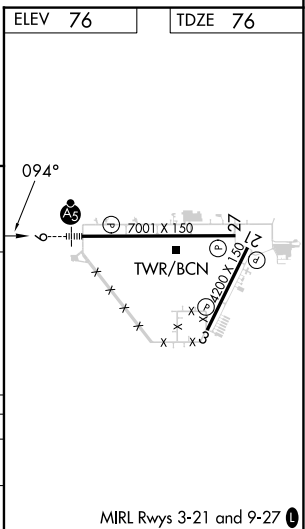
BROOKSVILLE-TAMPA BAY RGNL (BKV)

RNP APCH.	MALSR	MISSED APPROACH: Climb to 2000 direct AZBOG and hold.
<p>▼ For uncompensated Baro-VNAV systems, LNAV/VNAV NA below -15°C or above 48°C.</p> <p>▲ For inop ALS increase LNAV Cat D visibility to 1/4 SM.</p>		

ASOS 134.725	TAMPA APP CON 125.3 316.05	BROOKSVILLE TOWER ★ 118.55 (CTAF) 0	GND CON 121.4	CLNC DEL 119.125 (When twr closed)	UNICOM 123.0
------------------------	--------------------------------------	---	-------------------------	---	------------------------



4 NM Holding Pattern		VGSI and RNAV glidepath not coincident (VGSI Angle 3.00/TCH 58).		2000	AZBOG
ASKEH		OWAGO		*LNAV only.	
6000	← 274°	1800	→ 094°	*1.2 NM to RW09	
2000	→ 094°	1800	→ 094°		
GP 3.00°		1800			
TCH 57					
		6.2 NM	4 NM	1.2	
CATEGORY	A	B	C	D	
LNAV/VNAV	DA	507-1 431 (500-1)			
LNAV MDA		500-3/4	424 (500-3/4)	500-1	424 (500-1)



SE-3, 15 MAY 2025 to 12 JUN 2025

SE-3, 15 MAY 2025 to 12 JUN 2025