

WAAS CH <b>70536</b> <b>W25A</b>	APP CRS <b>255°</b>	Rwy Idg TDZE Apt Elev	<b>4001</b> <b>1065</b> <b>1067</b>
--	------------------------	-----------------------------	---

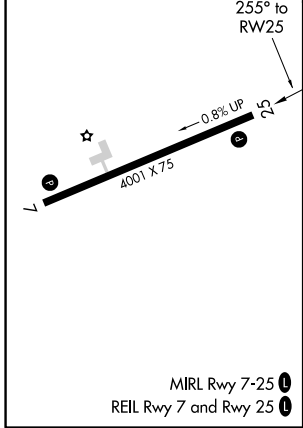
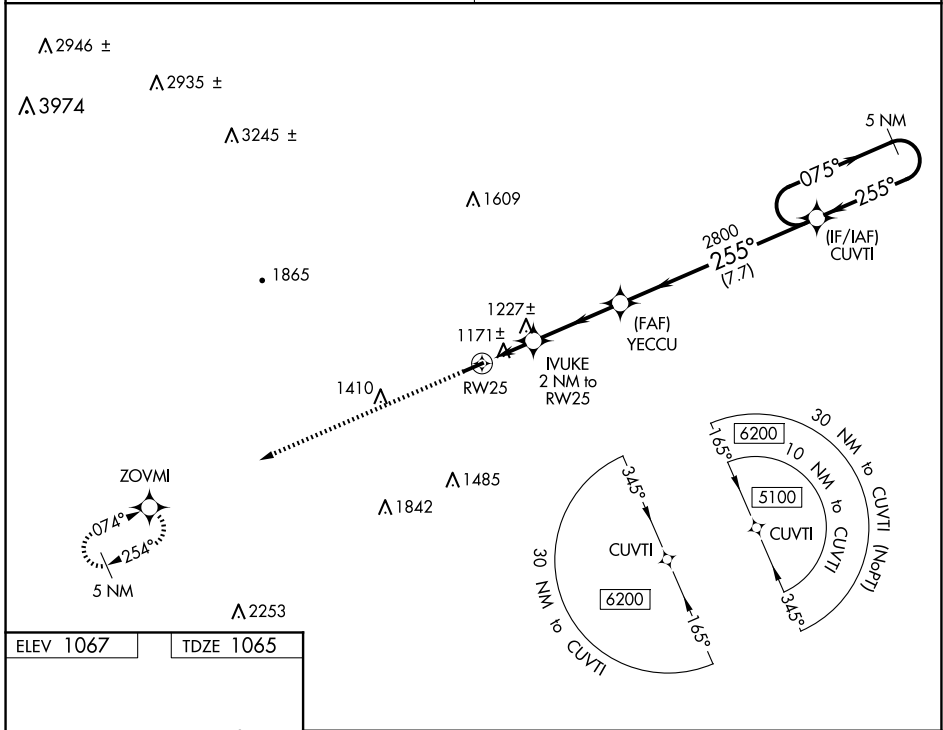
# RNAV (GPS) RWY 25

ELKIN MUNI (ZEF)

▼ Obtain local altimeter setting on CTAF; when not received, use Mount Airy altimeter setting and increase MDA 80 ft and LP and Circling Cats C/D  
 ▲ NA visibility ¼ mile. DME/DME RNP-0.3 NA. Procedure NA at night.  
 Helicopter visibility reduction below 1 SM NA.

MISSED APPROACH: Climb to 4900 direct ZOVMI and hold, continue climb-in-hold to 4900.

ATLANTA CENTER <b>125.15 263.0</b>	UNICOM <b>123.05 (CTAF) 0</b>
---------------------------------------	----------------------------------



ELEV 1067	TDZE 1065	4900	ZOVMI	Visual Segment - Obstacles.	5 NM
CATEGORY		A	B	C	D
LP	MDA	1 440-1	375 (400-1)	1 440-1 <sup>1</sup> / <sub>8</sub>	375 (400-1 <sup>1</sup> / <sub>8</sub> )
LNAV	MDA	1 480-1	415 (500-1)	1 480-1 <sup>3</sup> / <sub>8</sub>	415 (500-1 <sup>3</sup> / <sub>8</sub> )
CIRCLING		1 540-1	1 600-1	1 680-1 <sup>3</sup> / <sub>4</sub>	1 840-2 <sup>1</sup> / <sub>2</sub>
		473 (500-1)	533 (600-1)	613 (700-1 <sup>3</sup> / <sub>4</sub> )	773 (800-2 <sup>1</sup> / <sub>2</sub> )

SE-2, 15 MAY 2025 to 12 JUN 2025

SE-2, 15 MAY 2025 to 12 JUN 2025