

WAAS CH 69431 W05A	APP CRS 049°	Rwy Idg TDZE 166 Apt Elev 166	5254
--	------------------------	---	-------------

RNAV (GPS) RWY 5

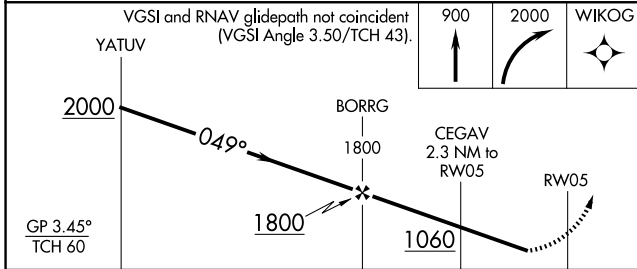
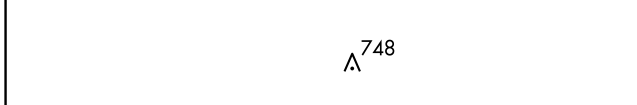
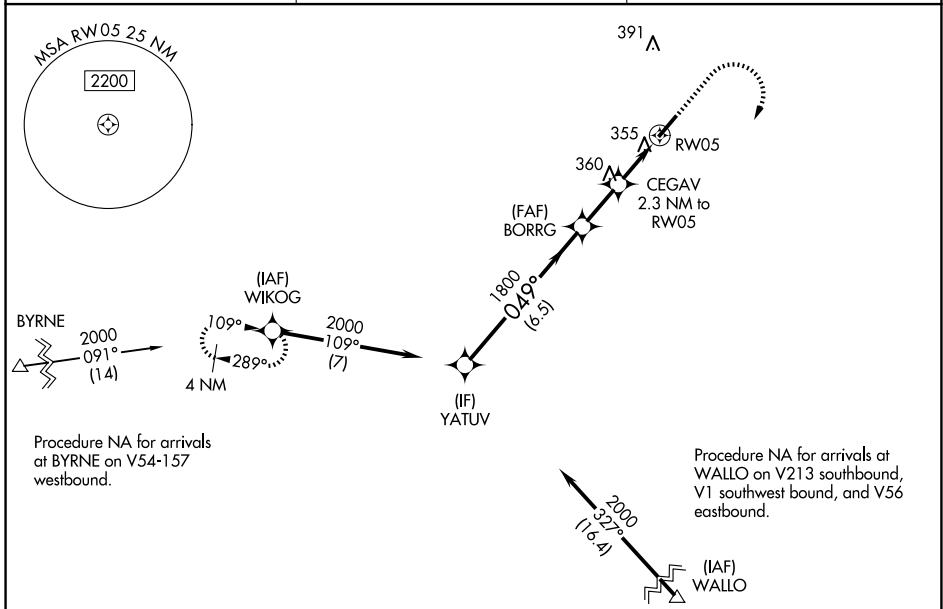
MOUNT OLIVE MUNI (W40)

RNP APCH - GPS.

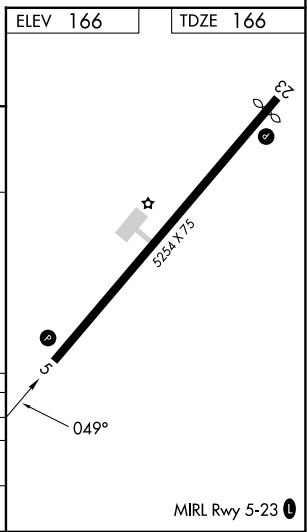
▽
▲ Rwy 5 helicopter visibility reduction below 3/4 SM NA. When local altimeter setting not received, use Goldsboro altimeter setting.

MISSED APPROACH: Climb to 900 then climbing right turn to 2000 direct WIKOG and hold.

AWOS-3P 120.075	SEYMOUR JOHNSON APP CON* 119.7 273.6	UNICOM 122.8 (CTAF) 0
---------------------------	--	---------------------------------



CATEGORY	A	B	C	D
LPV DA	625-1 ³ / ₈		459 (500-1 ³ / ₈)	NA
LNVA MDA	640-1	474 (500-1)	640-1 ³ / ₈ 474 (500-1 ³ / ₈)	NA
CIRCLING	700-1	534 (600-1)	720-1 ¹ / ₂ 554 (600-1 ¹ / ₂)	NA



SE-2, 15 MAY 2025 to 12 JUN 2025

SE-2, 15 MAY 2025 to 12 JUN 2025