

APP CRS	Rwy Idg	4499
339°	TDZE	157
	Apt Elev	160

RNAV (GPS) RWY 33

WILSON INDUSTRIAL AIR CENTER (W03)

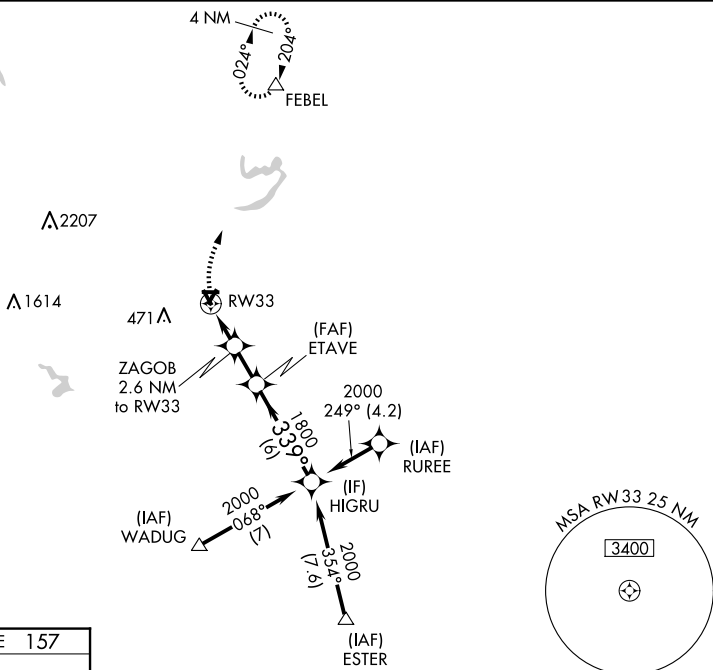
RNP APCH.

▼ Obtain local altimeter setting on CTAF; when not received, use Rocky Mount altimeter setting. Straight-in Rwy 33 NA at night, Circling Rwy 9, 15, 27, 33 NA at night. Rwy 33 helicopter visibility reduction below 1 SM NA.

MISSED APPROACH: Climbing right turn to 2500 direct FEBEL WP and hold.

WASHINGTON CENTER
123.85 279.65

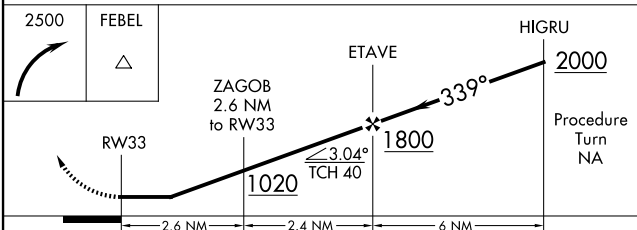
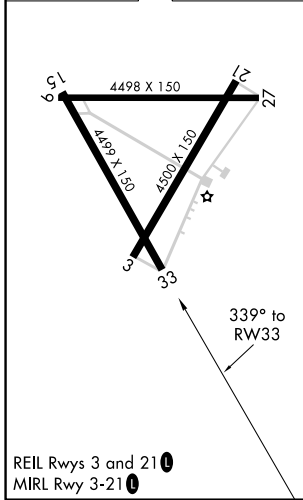
UNICOM
123.0 (CTAF) 0



SE-2, 15 MAY 2025 to 12 JUN 2025

SE-2, 15 MAY 2025 to 12 JUN 2025

ELEV 160	TDZE 157
----------	----------



CATEGORY	A	B	C	D
LNAV MDA	640-1	483 (500-1)	640-1¼ 483 (500-1¼)	640-1½ 483 (500-1½)
CIRCLING	660-1	500 (500-1)	780-1¾ 620 (700-1¾)	780-2 620 (700-2)
ROCKY MOUNT ALTIMETER SETTING MINIMUMS				
LNAV MDA	660-1	503 (500-1)	660-1½	503 (500-1½)
CIRCLING	680-1	520 (600-1)	800-1¾ 640 (700-1¾)	800-2 640 (700-2)