

LOM VU <b>346</b>	APP CRS <b>224°</b>	Rwy Idg <b>5499</b> TDZE <b>584</b> Apt Elev <b>609</b>
----------------------	------------------------	---

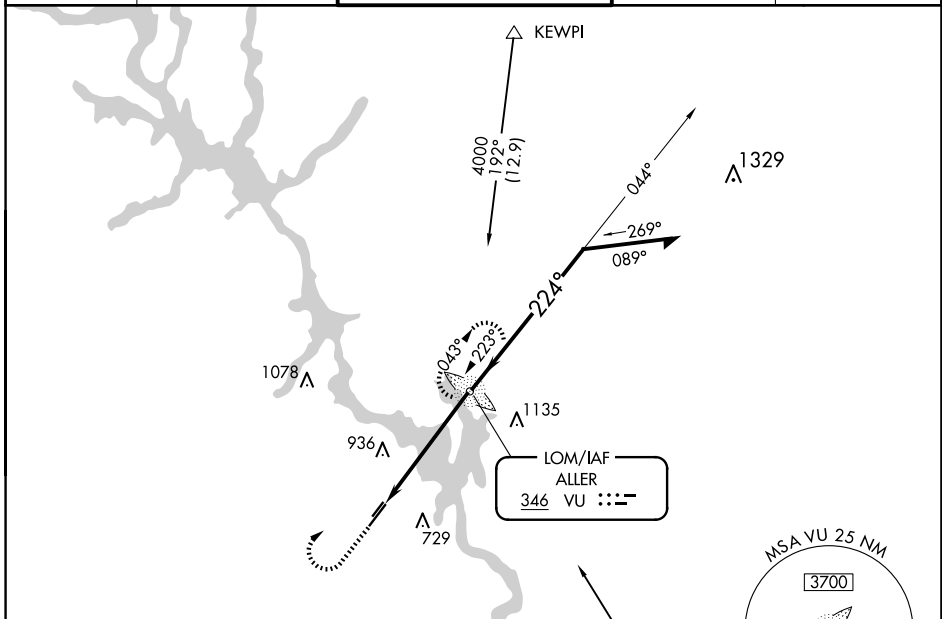
# NDB RWY 22L

STANLY COUNTY (VUJ)

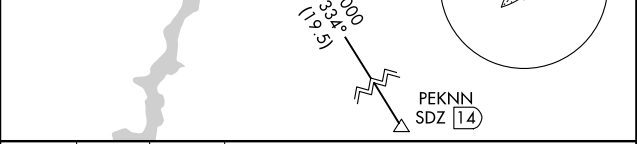
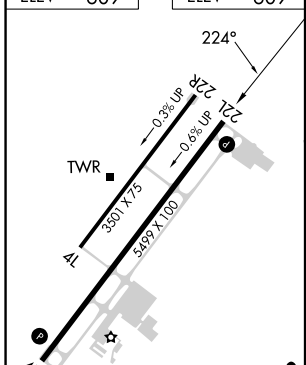
**PAR** Circling to Rwy 4L/22R NA at night. When local altimeter setting not received, use Asheboro altimeter setting and increase all MDA 60 feet; increase S-22L Cats C and D, and Circling Cats C and D visibility ¼ mile.

**MISSED APPROACH:** Climb to 1500 then climbing right turn to 4000 direct ALLER LOM and hold, continue climb-in-hold to 4000.

AWOS-3 <b>128.175</b>	CHARLOTTE APP CON <b>128.325 307.8</b>	STANLY COUNTY TOWER★ <b>126.275 (CTAF) 0 291.9</b>	GND CON <b>121.75 254.375</b>	CLNC DEL <b>121.75 254.375</b>
--------------------------	---	---	----------------------------------	-----------------------------------



ELEV 609	ELEV 609
----------	----------



1500 4000 VU

VGSI and descent angles not coincident (VGSI Angle 3.00/TCH 40).

VU LOM 044° 2600

224° 2400

3.27° TCH 40

5.1 NM

CATEGORY	A	B	C	D
S-22L	1240-1 656 (700-1)		1240-1¾ 656 (700-1¾)	1240-2 656 (700-2)
CIRCLING	1260-1 651 (700-1)		1260-1¾ 651 (700-1¾)	1380-2½ 771 (800-2½)

SE-2, 15 MAY 2025 to 12 JUN 2025

SE-2, 15 MAY 2025 to 12 JUN 2025