

WAAS CH 90325 W20A	APP CRS 196°	Rwy Idg TDZE Apt Elev	5500 662 666
--	------------------------	-----------------------------	---

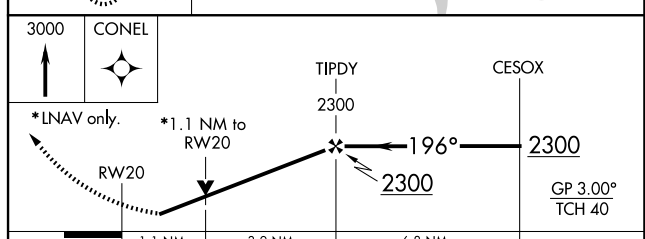
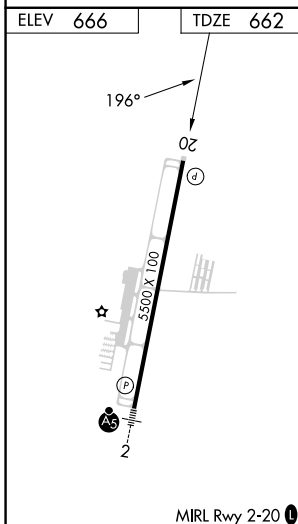
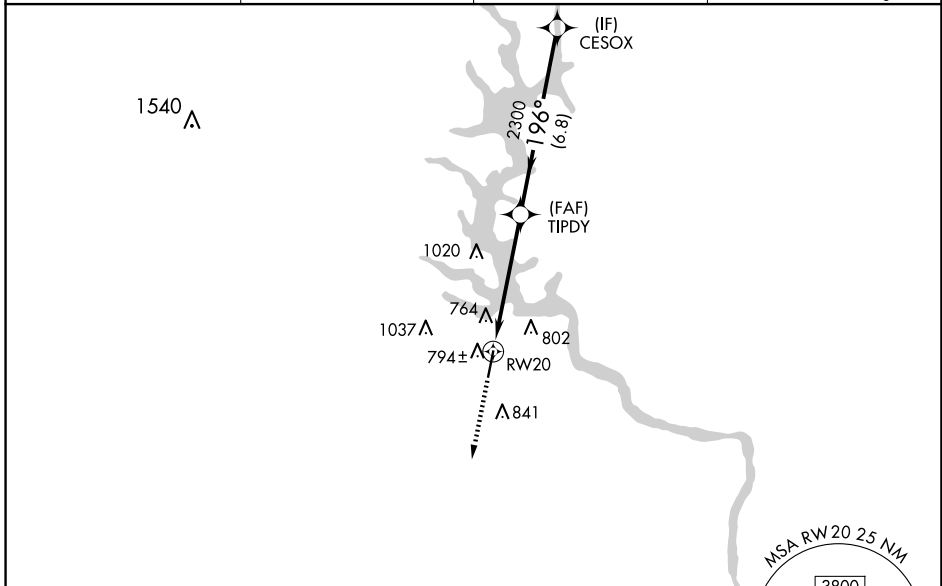
RNAV (GPS) RWY 20
ROCK HILL/YORK COUNTY/BRYANT FLD (UZA)

RNP APCH-GPS.

⚠ For uncompensated Baro-VNAV systems, procedure NA below -16°C or above 39°C.
⚠ When local altimeter setting not received, use Charlotte/Douglas Intl altimeter setting and increase LPV DA to 957 feet, LNAV/VNAV DA to 1084 feet, and all MDAs 60 feet; increase LPV visibility all Cats 1/8 SM, LNAV/VNAV visibility all Cats 1/4 SM, and LNAV visibility Cat C/D 1/4 SM. VDP and Baro-VNAV NA when using Charlotte/Douglas Intl altimeter setting. Rwy 20 helicopter visibility reduction below 3/4 SM NA.

MISSED APPROACH: Climb to 3000 direct CONEL and hold.

ASOS 120.775	CHARLOTTE APP CON 120.05 307.8	GCO 121.725	UNICOM 123.05 (CTAF) 0
------------------------	--	-----------------------	----------------------------------



CATEGORY	A	B	C	D
LPV DA		912-3/4	250 (300-3/4)	
LNAV/VNAV DA		1039-1	377 (400-1)	
LNAV MDA	1060-1	398 (400-1)	1060-1/8	398 (400-1/8)
CIRCLING	1140-1 474 (500-1)	1160-1 494 (500-1)	1340-2 674 (700-2)	1340-2 1/4 674 (700-2 1/4)

SE-2, 15 MAY 2025 to 12 JUN 2025

SE-2, 15 MAY 2025 to 12 JUN 2025