

WAAS CH 86904 W23A	APP CRS 230°	Rwy Idg TDZE Apt Elev	5500 185 192
--	------------------------	-----------------------------	---

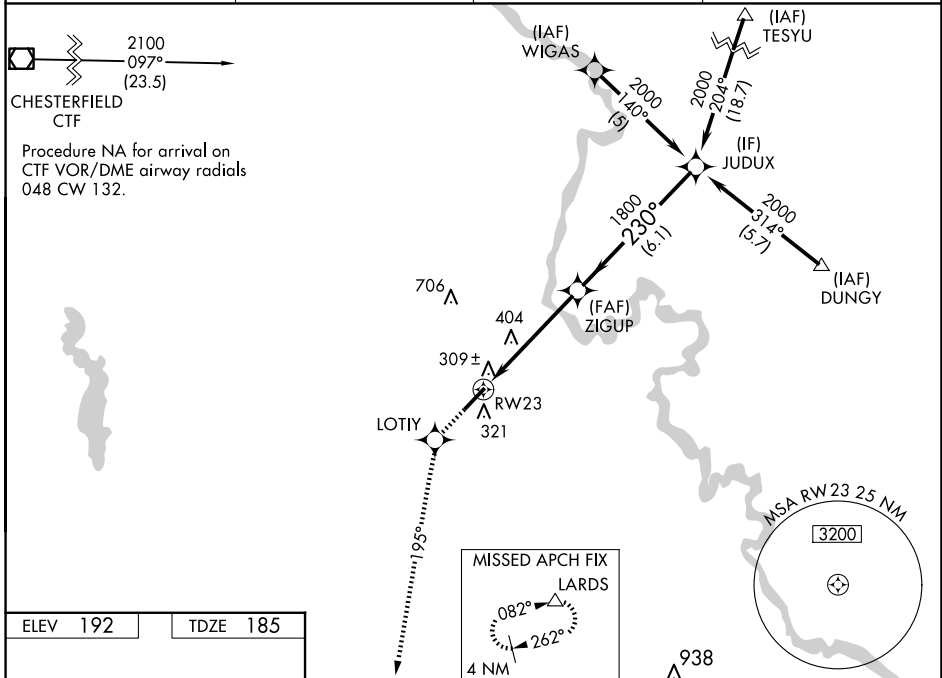
RNAV (GPS) RWY 23

DARLINGTON COUNTY (UDG)

⚠ For uncompensated Baro-VNAV systems, LNAV/VNAV NA below -15°C (5°F) or above 48°C (118°F). When local altimeter setting not received, use Florence altimeter setting: increase LPV DA to 527 feet and all visibilities ¼ SM; increase LNAV/VNAV DA to 627 feet; increase all MDAs 60 feet and visibility Cat D ¼ SM. DME/DME RNP-0.3 NA. Helicopter visibility reduction below ¾ SM NA. Baro-VNAV NA when using Florence altimeter setting.

MISSED APPROACH: Climb to 2000 direct LOTIY and via 195° track to LARDS and hold.

AWOS-3PT 119.925	FLORENCE APP CON ★ 118.6 341.7	CLNC DEL 118.55	UNICOM 123.0 (CTAF) 0
----------------------------	--	---------------------------	---------------------------------



ELEV 192	TDZE 185	<table border="1"> <tr> <td>2000</td> <td>LOTIY</td> <td>LARDS</td> <td colspan="2">JUDUX</td> </tr> <tr> <td>↑</td> <td>✦</td> <td>△</td> <td colspan="2"></td> </tr> <tr> <td></td> <td>tr 195°</td> <td></td> <td colspan="2"></td> </tr> </table>				2000	LOTIY	LARDS	JUDUX		↑	✦	△				tr 195°													
2000	LOTIY	LARDS	JUDUX																											
↑	✦	△																												
	tr 195°																													
		<p>*LNAV only.</p> <p>*1.5 NM to RW23</p> <p>1.5 3.4 NM 6.1 NM</p> <p>Procedure Turn NA</p> <p>GP 3.00° TCH 40</p>																												
MIRL Rwy 5-23 0		<table border="1"> <thead> <tr> <th>CATEGORY</th> <th>A</th> <th>B</th> <th>C</th> <th>D</th> </tr> </thead> <tbody> <tr> <td>LPV DA</td> <td colspan="4">479-1 294 (300-1)</td> </tr> <tr> <td>LNAV/VNAV DA</td> <td colspan="4">579-1½ 394 (400-1½)</td> </tr> <tr> <td>LNAV MDA</td> <td>700-1 515 (600-1)</td> <td>700-1½ 515 (600-1½)</td> <td>700-1¾ 515 (600-1¾)</td> <td></td> </tr> <tr> <td>CIRCLING</td> <td>700-1 508 (600-1)</td> <td>720-1½ 528 (600-1½)</td> <td>1020-2¾ 828 (900-2¾)</td> <td></td> </tr> </tbody> </table>				CATEGORY	A	B	C	D	LPV DA	479-1 294 (300-1)				LNAV/VNAV DA	579-1½ 394 (400-1½)				LNAV MDA	700-1 515 (600-1)	700-1½ 515 (600-1½)	700-1¾ 515 (600-1¾)		CIRCLING	700-1 508 (600-1)	720-1½ 528 (600-1½)	1020-2¾ 828 (900-2¾)	
CATEGORY	A	B	C	D																										
LPV DA	479-1 294 (300-1)																													
LNAV/VNAV DA	579-1½ 394 (400-1½)																													
LNAV MDA	700-1 515 (600-1)	700-1½ 515 (600-1½)	700-1¾ 515 (600-1¾)																											
CIRCLING	700-1 508 (600-1)	720-1½ 528 (600-1½)	1020-2¾ 828 (900-2¾)																											

SE-2, 15 MAY 2025 to 12 JUN 2025

SE-2, 15 MAY 2025 to 12 JUN 2025