

WAAS CH <b>50510</b> <b>W24A</b>	APP CRS <b>240°</b>	Rwy Idg TDZE Apt Elev	<b>6005</b> <b>609</b> <b>609</b>
--	------------------------	-----------------------------	---

# RNAV (GPS) RWY 24

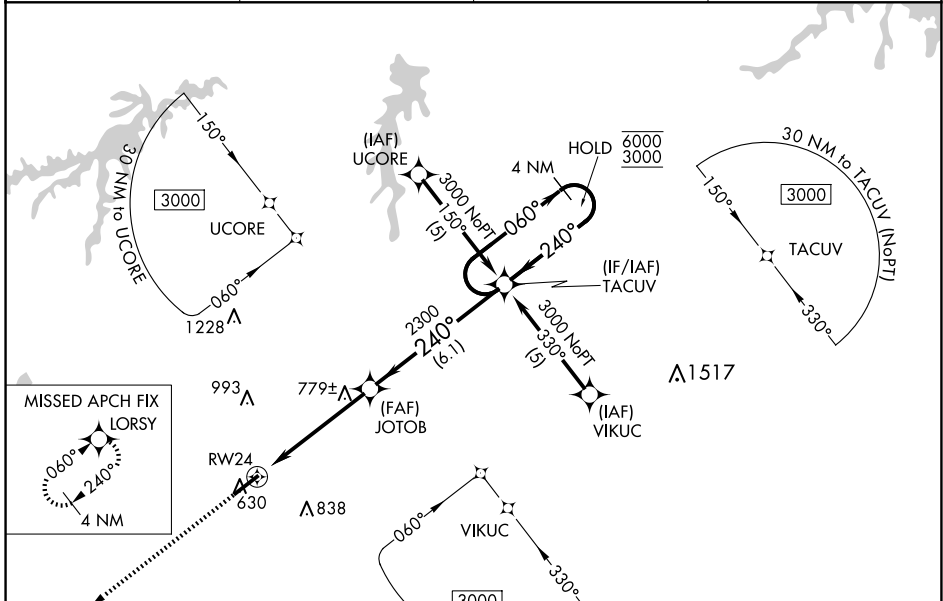
RALEIGH RGNL AT PERSON COUNTY (TDF)

RNP APCH.

▼ Rwy 24 helicopter visibility reduction below ¾ SM NA. For uncompensated  
 ▲ Baro-VNAV systems, LNAV/VNAV NA below -16°C or above 54°C.

MISSED APPROACH:  
 Climb to 3000 direct  
 LORSY and hold.

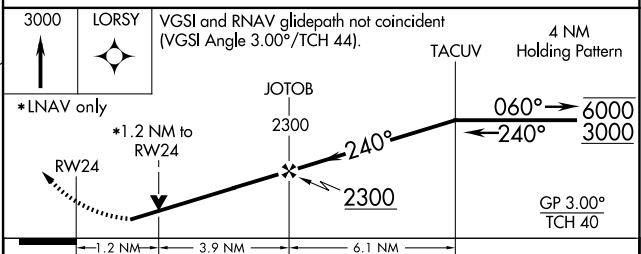
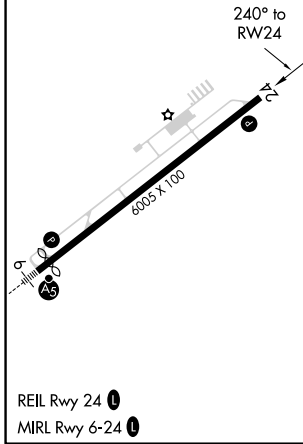
AWOS-3 <b>126.725</b>	RALEIGH APP CON <b>132.35 256.9</b>	GCO <b>119.7</b>	UNICOM <b>122.7 (CTAF) 0</b>
--------------------------	--	---------------------	---------------------------------



SE-2, 15 MAY 2025 to 12 JUN 2025

SE-2, 15 MAY 2025 to 12 JUN 2025

ELEV <b>609</b>	TDZE <b>609</b>
-----------------	-----------------



CATEGORY	A	B	C	D
LPV DA		920-1	311 (400-1)	
LNAV/VNAV DA		997-1½	388 (400-1½)	
LNAV MDA	1040-1	431 (500-1)	1040-1¼ 431 (500-1¼)	1040-1½ 431 (500-1½)
CIRCLING	1080-1	471 (500-1)	1300-2 691 (700-2)	1300-2¼ 691 (700-2¼)

REIL Rwy 24 0  
 MIRL Rwy 6-24 0