

LOC/DME I-TDF <b>108.7</b> Chan 24	APP CRS <b>060°</b>	Rwy Idg TDZE Apt Elev <b>5702</b> <b>604</b> <b>609</b>
--	------------------------	--

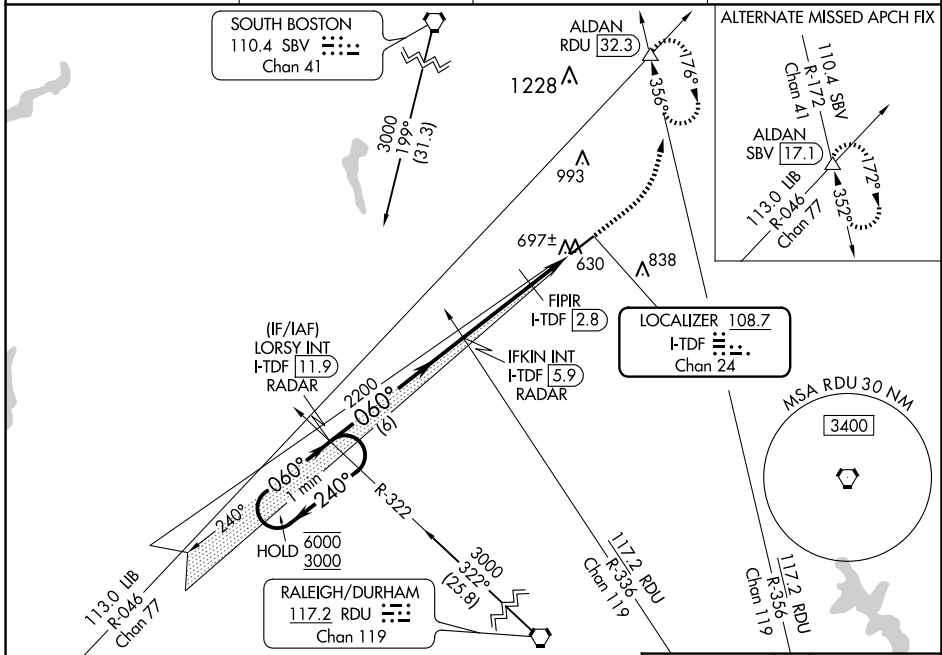
# ILS or LOC RWY 6

RALEIGH RGNL AT PERSON COUNTY (TDF)

**▼** For inop ALS, increase S-LOC 6 visibility Cats C/D to 1½ SM and increase FIPR fix minimums  
**▲ NA** S-LOC 6 visibility Cats C/D to 1 SM.

**MALSR** MISSED APPROACH: Climb to 1500 then climbing left turn to 3000 on heading 021° and on RDU VORTAC R-356 to ALDAN INT/RDU 32.3 DME and hold, continue climb-in-hold to 3000.

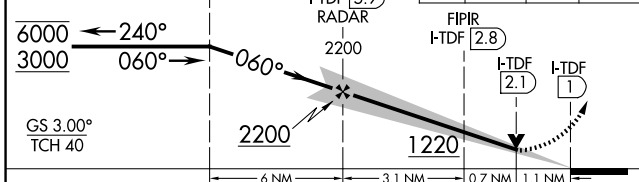
AWOS-3 <b>126.725</b>	RALEIGH APP CON <b>132.35 256.9</b>	GCO <b>119.7</b>	UNICOM <b>122.7 (CTAF) 0</b>
--------------------------	--	---------------------	---------------------------------



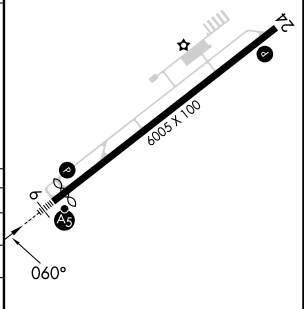
SE-2, 15 MAY 2025 to 12 JUN 2025

SE-2, 15 MAY 2025 to 12 JUN 2025

One Minute Holding Pattern	LORSY INT I-TDF 11.9 RADAR	IFKIN INT I-TDF 5.9 RADAR	FIPR I-TDF 2.8	RDU R-356	ALDAN
6000 ← 240°	3000 → 060°	2200	1220	1500	3000
GS 3.00° TCH 40		hdg 021°			



ELEV 609	TDZE 604
----------	----------



CATEGORY	A	B	C	D
S-ILS 6	804-½ 200 (200-½)			
S-LOC 6	1220-½	616 (700-½)	1220-1⅜	616 (700-1⅜)
CIRCLING	1220-1	611 (700-1)	1300-2	1300-2¼
			691 (700-2)	691 (700-2¼)
FIPR FIX MINIMUMS				
S-LOC 6	980-½	376 (400-½)	980-⅝	376 (400-⅝)
CIRCLING	1080-1	471 (500-1)	1300-2	1300-2¼
			691 (700-2)	691 (700-2¼)

REIL Rwy 24 0	MIRL Rwy 6-24 0				
FAF to MAP 4.9 NM					
Knots	60	90	120	150	180
Min:Sec	4:54	3:16	2:27	1:58	1:38