

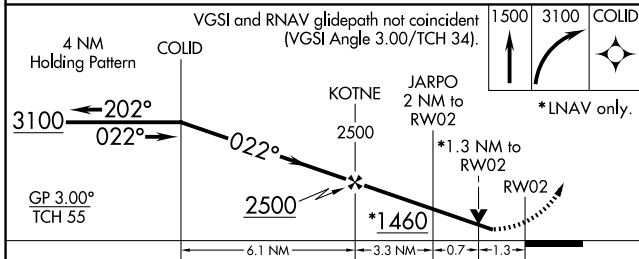
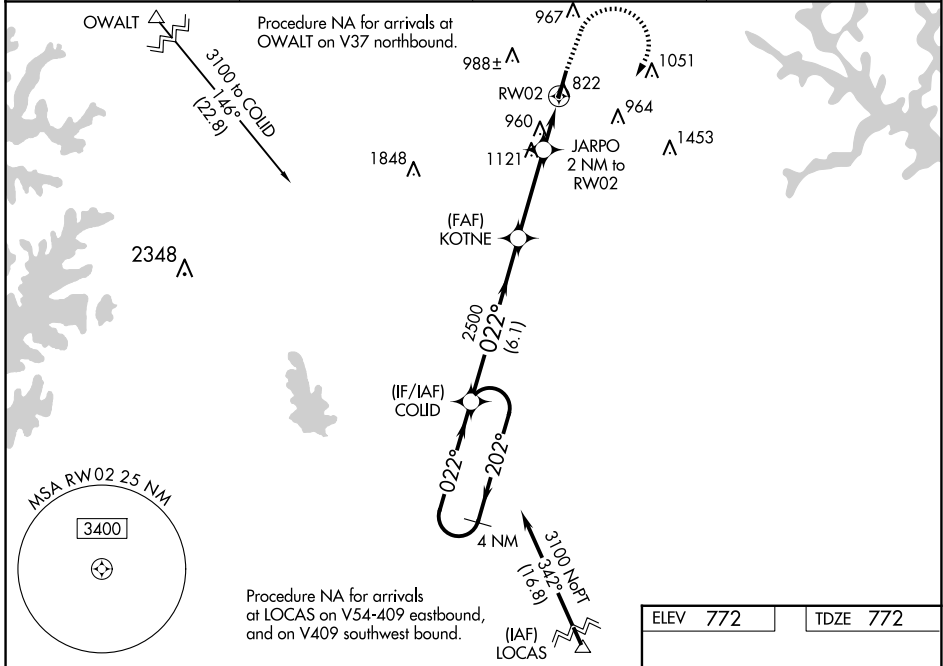
WAAS CH 40321 W02A	APP CRS 022°	Rwy Idg TDZE Apt Elev	5375 772 772
--	------------------------	-----------------------------	---

RNAV (GPS) RWY 2

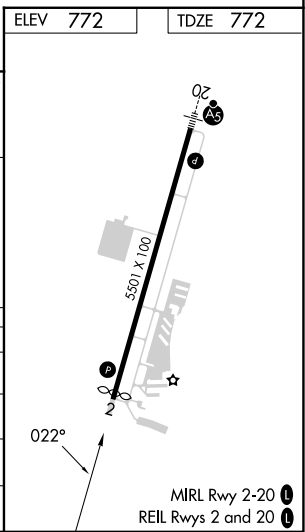
MID-CAROLINA RGNL (RUQ)

RNP APCH.			MISSED APPROACH: Climb to 1500 then climbing right turn to 3100 direct COLID and hold.
For uncompensated Baro-VNAV systems, LNAV/VNAV NA below -16°C or above 54°C. Rwy 2 helicopter visibility reduction below 3/4 SM NA.			

AWOS-3 118.175	CHARLOTTE APP CON 128.325 307.8	CLNC DEL 127.35	UNICOM 122.725 (CTAF) 0
--------------------------	---	---------------------------	--



CATEGORY	A	B	C	D
LPV DA		1138-1	366 (400-1)	
LNAV/VNAV DA		1181-1 1/8	409 (500-1 1/8)	
LNAV MDA	1220-1	448 (500-1)	1220-1 3/8	448 (500-1 3/8)
C CIRCLING	1220-1 448 (500-1)	1260-1 488 (500-1)	1440-1 3/4 668 (700-1 3/4)	1440-2 668 (700-2)



SE-2, 15 MAY 2025 to 12 JUN 2025

SE-2, 15 MAY 2025 to 12 JUN 2025