

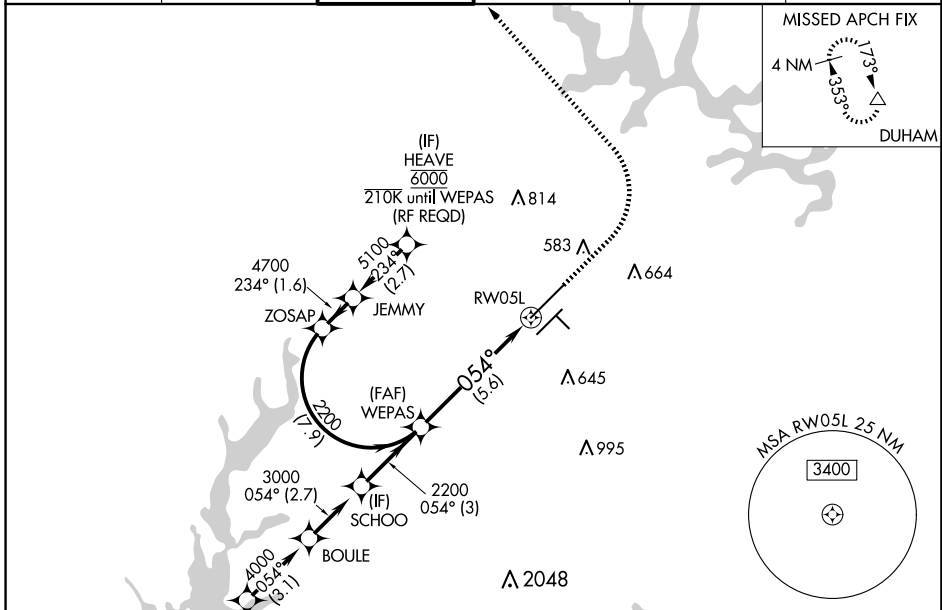
APP CRS	Rwy Idg	<b>10000</b>
<b>054°</b>	TDZE	<b>384</b>
	Apt Elev	<b>435</b>

# RNAV (RNP) Z RWY 5L

RALEIGH-DURHAM INTL (RDU)

RNP AR APCH-GPS.	MALSR 	MISSED APPROACH: Climb to 1000 then climbing left turn to 2200 direct DUHAM and hold.
<p>▼ For uncompensated Baro-VNAV systems, procedure NA below -1°C or above 54°C. Simultaneous approach authorized, except for arrivals at HEAVE. For inop ALS, increase RNP 0.10 all Cats visibility to RVR 4500.</p>		

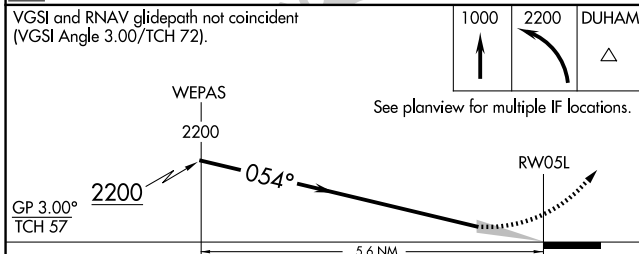
D-ATIS <b>123.8</b>	RALEIGH APP CON <b>127.675 307.9</b>	RALEIGH TOWER <b>127.45 257.8</b>	GND CON <b>121.9 348.6</b>	CLNC DEL <b>120.1</b>	CPDLC
------------------------	---	--------------------------------------	-------------------------------	--------------------------	-------



SE-2, 15 MAY 2025 to 12 JUN 2025

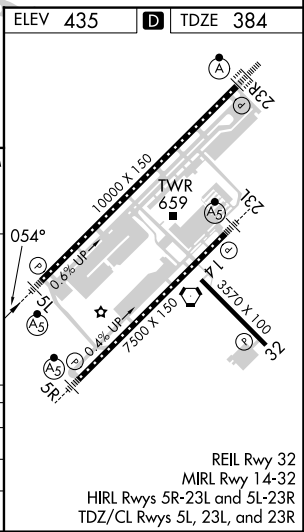
SE-2, 15 MAY 2025 to 12 JUN 2025

(IAF) OTOTOS 6000 210K	(IAF) CHWDR 210K	(IF) BOULE 4000	(IF) SCHOO 2200	(FAF) WEPAS 2200	(IF) JEMMY 5100	(IF) HEAVE 6000
---------------------------	---------------------	--------------------	--------------------	---------------------	--------------------	--------------------



CATEGORY	A	B	C	D
RNP 0.10 DA		684/24	300 (300-½)	
RNP 0.30 DA		780/35	396 (400-⅙)	

**AUTHORIZATION REQUIRED**



REIL Rwy 32  
MIRL Rwy 14-32  
HIRL Rws 5R-23L and 5L-23R  
TDZ/CL Rws 5L, 23L, and 23R